

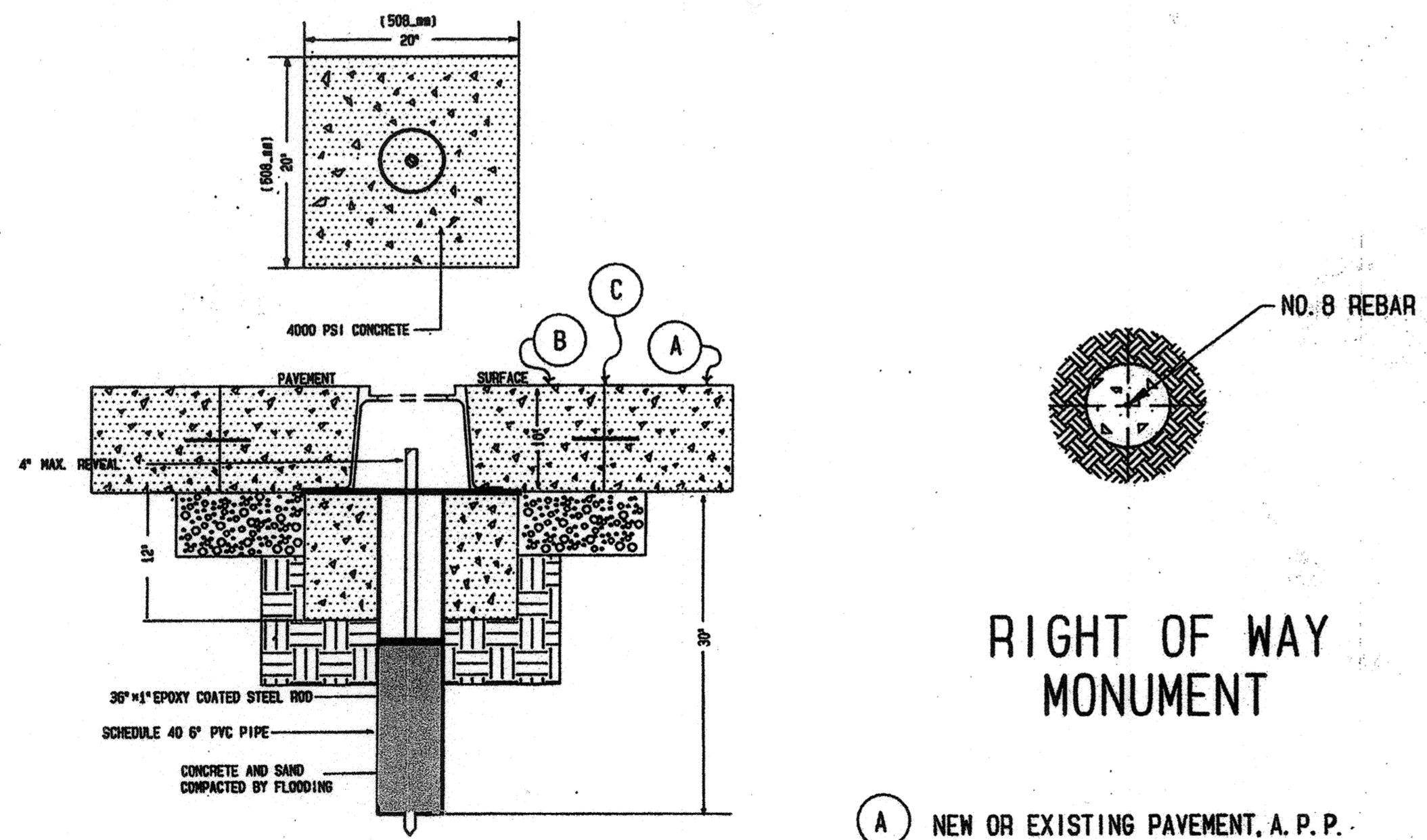
ADJUSTING RING
 * SEE NOTE BELOW

NOTE: ADJUSTING RING IS TO BE TACK WELDED TO THE FRAME BY AT LEAST TWO (2) POINTS OF AN APPROVED METHOD.

| ADJUSTMENT HEIGHT | DIMENSION 52A* | MINIMUM WEIGHTS |
|-------------------|----------------|------------------|
| 1-1/8" (29mm) | 2" (51mm) | 14-LBS. (6.4kg) |
| 1-1/2" (38mm) | 2-3/8" (60mm) | 20-LBS. (9.1kg) |
| 2-1/2" (64mm) | 3-3/8" (86mm) | 27-LBS. (12.2kg) |
| 3" (76mm) | 3-7/8" (98mm) | 30-LBS. (13.6kg) |
| 3-1/2" (89mm) | 4-3/8" (111mm) | 32-LBS. (14.5kg) |

* NOTE: USE OF ADJUSTING RING(S) MUST BE APPROVED BY THE CITY SURVEY SECTION.

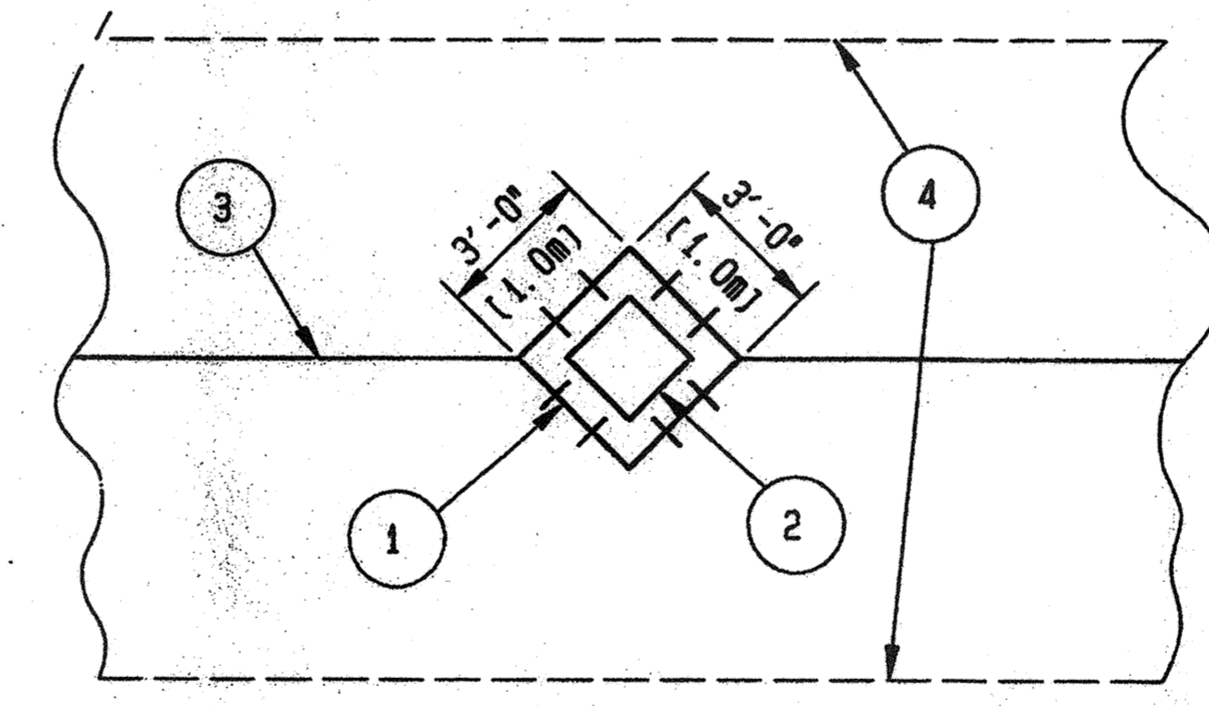
MONUMENT ASSEMBLY SECTION



ROADWAY MONUMENT ASSEMBLY

- (A) NEW OR EXISTING PAVEMENT, A. P. P.
- (B) NEW 3" ASPHALT OVER 7" CONCRETE OR 10" CONCRETE AS DETERMINED BY THE ABUTTING PAVEMENT.
- (C) 4" GUTTER SEAL AS PER ODOT 404.13 FOR ASPHALT SURFACES OR JOINT SEALER AS PER ODOT 451.13 FOR CONCRETE SURFACE DO NOT SEAL THE COVER TO FRAME

RIGHT OF WAY MONUMENT



- (1) MONUMENT ASSEMBLY BLOCK OUT OR FULL DEPTH SAW CUT CONSTRUCTION JOINT. W/12" (305mm) LONG 1-1/4" (32mm) DIA. DOWELS. (BY CONTRACTOR), MAY BE OMITTED IF THE EXISTING CONCRETE BASE, IF ANY IS LESS THAN 6" IN THICKNESS.
- (2) MONUMENT BOX (BY CONTRACTOR)
- (3) TYPICAL LONGITUDINAL JOINT
- (4) NEW CONCRETE OR ASPHALT OVER CONCRETE PAVEMENT; OR EXISTING PAVEMENT.

TYPICAL BLOCK OUT IN NEW RIGID PAVEMENT, OR MINIMUM FULL DEPTH SAW CUT IN EXISTING PAVEMENT.

NOTES

CASTINGS SHALL MINIMALLY MEET THE REQUIREMENTS OF 604.02-711.12, A. S. T. M. A 48, CLASS 35 GRAY IRON OR 711.13 DUCTILE IRON. THE ASSEMBLY SHALL BE ESSENTIALLY THE SAME AND EQUALLY AS STRONG AS THOSE SHOWN HEREON.

MINIMUM WEIGHTS:
 FRAME _____ 94 LBS. (42.6 kg)
 COVER _____ 16 LBS. (7.3 kg)

PROVIDED THEY COMPLY WITH THE SPECIFICATIONS, DETAILS, DIMENSIONS AND MINIMUM WEIGHTS.
 EAST JORDAN NO. 8360
 OR APPROVED EQUAL CASTINGS ARE ACCEPTABLE.

BEARING AREAS SHALL BE FINISHED AS TO PROVIDE A FIRM AND EVEN SEAT. NO PROJECTION SHALL EXIST ON THE BEARING AREAS AND THE COVER SHALL SEAT IN ITS FRAME WITHOUT ROCKING.

PRIOR TO CONSTRUCTION OF PAVEMENT, THE FRAME SHALL BE SET TO GRADE IN SUCH A MANNER THAT WILL PREVENT ANY PAVEMENT MATERIAL FROM ENTERING THE CASTING.

CONTACT CITY OF CLEVELAND SURVEY DEPT. AT (216) 664-2460 AT LEAST TWO (2) WEEKS PRIOR TO THE DISTURBANCE OF ANY EXISTING MONUMENTS.

ALL MONUMENTS ARE TO BE SET UNDER THE DIRECTION OF A REGISTERED SURVEYOR. (REF. O. A. C. 4733-37-03)

WHERE CLEVELAND REGIONAL GEODETIC SURVEY (C. R. G. S.) MONUMENT ASSEMBLIES ARE MARKED ON THE PLANS TO BE ABANDONED, THE CONTRACTOR SHALL CAREFULLY REMOVE AND STORE THE MONUMENT CASTINGS AND BRONZE C. R. G. S. MARKERS FOR SALVAGE BY THE COUNTY. THE CONTRACTOR SHALL ALSO NOTIFY THE REGIONAL GEODETIC SURVEY OFFICE AT (216) 348-3846, SO THAT THE MONUMENT CASTINGS AND BRONZE C. R. G. S. MARKERS MAY BE PICKED UP. PAYMENT SHALL BE MADE UNDER ITEM 202-MONUMENT ASSEMBLY ABANDONED, C. R. G. S. MONUMENT.

- ITEM 202- MONUMENT ASSEMBLY ABANDONED, C. R. G. S. MONUMENT
- ITEM 604- CITY OF CLEVELAND MONUMENT BOX
- ITEM 604- CITY OF CLEVELAND ROADWAY MONUMENT ASSEMBLY
- ITEM 604- CITY OF CLEVELAND RIGHT OF WAY MONUMENT
- ITEM 604- MONUMENT BOX ADJUSTED TO GRADE, AS PER PLAN (ONLY WHEN EXISTING MONUMENT BOX CONFORMS TO MB-1C AND IS SUITABLE FOR REUSE)

LEGEND

- CONCRETE, 4000P. S. I. AS PER CONCRETE MIX
- SAND (703.02), COMPACTED AS REQUIRED
- SUBBASE/AGGREGATE BASE PER THE PLANS. (6" MINIMUM; INCREASE, IF REQUIRED, TO MATCH THE BOTTOM OF THE NEW OR EXISTING SUBBASE)
- UNDISTURBED EARTH OR SUITABLE BACKFILL AND FIRM FOUNDATION IN ACCORDANCE WITH 604.04 AND TO THE SATISFACTION OF THE ENGINEER.

CITY OF CLEVELAND

MONUMENT BOX & ASSEMBLIES

STANDARD CONSTRUCTION DRAWING MB-1C

APPROVED: GIE DATE: 10-15-14

REVISIONS
 UPDATED: 01/05/11
 UPDATED: 10/15/14

Note: All NEW SURVEY MONUMENT ASSEMBLIES MUST BE APPROVED BY THE CITY OF CLEVELAND'S SURVEY SECTION. MUST BE LAYED OUT AND REFERENCED BY A PROFESSIONAL LAND SURVEYOR LICENSED TO PRACTICE IN THE STATE OF OHIO. THE FOLLOWING PROCEDURE MUST BE USED FOR THE INSTALLATION/CONSTRUCTION OF ALL SURVEY MONUMENT ASSEMBLIES. 01.) USE REFERENCES PROVIDED BY SURVEYOR TO POSITION 6" X 30" P.V.C. (BE SURE P.V.C IS PLUM). 02.) FILL P.V.C. HALF WAY W/SAND. 03.) SECURE P.V.C. WITH A 20" X 20" X 12" CONCRETE PAD (P.V.C MUST BE FLUSH W/CONC. PAD). P.V.C AND CONC. PAD MUST BE SET AT THE APPROPRIATE DEPTH BELOW FINISH GRADE SO THAT THE MON. BOX/CASTING RESTS ON TOP OF CONC. PAD. 04.) COVER P.V.C & CONC. PAD WITH VISQUEEN/PLASTIC BOND BREAKER. 05.) AFTER CONC. HAS SET, CENTER MON. BOX/CASTING OVER P.V.C. 06.) MON. BOX/CASTING MUST BE SECURED WITH A 3' X 3' CONC. PAD (DEPTH BELOW FINISHED GRADE TO BE DETERMINED BY THE DEPTH OF PAVEMENT). 07.) SET 5/8" X 36" EPOXY COATED IRON PIN (REBAR) USING REFERENCES PROVIDED BY SURVEYOR (BE SURE I.P. IS PLUM AND EXTENDS OUT OF P.V.C. AT LEAST 1" AND NO MORE THAN 3"). 08.) BACKFILL P.V.C. W/QUICKCRETE. 09.) I.P.S. TO BE SET BY THE CITY OF CLEVELAND'S SURVEY SECTION WHEN POSSIBLE, AND WILL BE DETERMINED BASED ON THE SCOPE & SIZE OF THE PROJECT, BEFORE CONTRACT IS AWARDED. FINAL NOTE: CONTRATORS ARE RESPONSIBLE FOR SUPPLYING ALL MATERIALS (INCLUDING I.P.S & QUICKCREET)