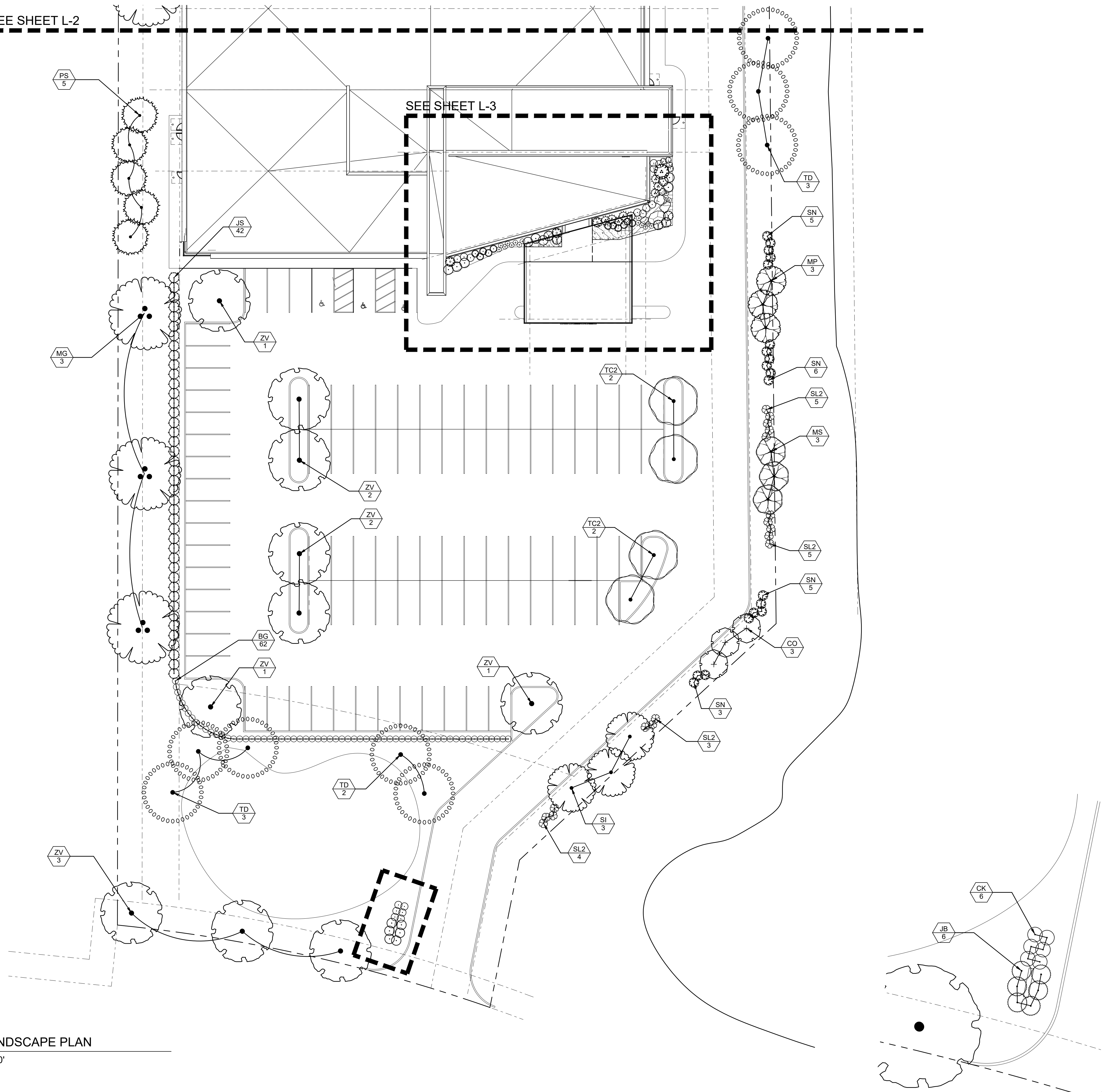


SEE SHEET L-2

SEE SHEET L-3



1 LANDSCAPE PLAN  
1"=20'

2 ENTRY LANDSCAPE  
1"=10'

GENERAL PLANTING NOTES:

1. SURVEY INFORMATION OBTAINED ELECTRONICALLY. KLA STUDIOS CANNOT ATTEST TO THE ACCURACY OR RELIABILITY OF LEGAL BOUNDARIES, EASEMENTS OR FIELD GATHERED DATA.
2. THE LOCATION OF THE EXISTING UNDERGROUND UTILITIES ARE SHOWN IN AN APPROXIMATE WAY ONLY AND HAVE NOT BEEN INDEPENDENTLY VERIFIED BY THE OWNER OR ITS REPRESENTATIVE. THE CONTRACTOR SHALL DETERMINE THE EXACT LOCATION OF ALL EXISTING UTILITIES PRIOR TO COMMENCING WORK AND AGREES TO BE FULLY RESPONSIBLE FOR ANY AND ALL DAMAGES WHICH MIGHT BE OCCASIONED BY THE CONTRACTOR'S FAILURE TO EXACTLY LOCATE AND PRESERVE ANY AND ALL UNDERGROUND UTILITIES.
3. ALL DIMENSIONS ARE TAKEN TO FACE OF CURB OR BUILDING WHERE APPLICABLE UNLESS OTHERWISE NOTED. USE DIMENSIONAL INFORMATION GIVEN. DO NOT SCALE DRAWINGS.
4. CONTRACTOR SHALL REFER QUESTIONS ON MATERIALS, FINISHES, LABOR, AND/OR PERFORMANCE STANDARDS NOT SPECIFIED HEREIN TO THE LANDSCAPE ARCHITECT.
5. ALL CHANGES TO DESIGN OR PLANT SUBSTITUTIONS ARE TO BE AUTHORIZED BY THE LANDSCAPE ARCHITECT.
6. CONSULT PLANT SCHEDULE FOR PLANT SIZES AND SPECIFICATIONS. CONTRACTOR IS RESPONSIBLE FOR ALL PLANTS DRAWN ON PLANS. PLANT LIST QUANTITIES ARE FOR CONVENIENCE ONLY.
7. ALL PLANTS TO CONFORM TO THE AMERICAN STANDARD FOR NURSERY STOCK (ANSI-Z60.1-2014) IN REGARDS TO SIZING, GROWING AND B&B SPECIFICATIONS.
8. ALL PROPOSED PLANTING BEDS TO BE TILLED TO A MINIMUM DEPTH OF 12".
9. ALL PLANTING BEDS TO BE FERTILIZED WITH 10-10-10 OR APPROVED EQUAL.
10. PLANTING HOLES TO BE DUG A MINIMUM OF TWICE THE WIDTH AND 6-8 INCHES DEEPER THAN THE SIZE OF THE ROOT BALL OF BOTH SHRUB AND TREE AND TO BE AMENDED WITH ORGANIC SOIL CONDITIONER.
11. IN AREAS WHERE BEDROCK OR HEAVILY COMPACTED ROCK FILL IS ENCOUNTERED, THE PLANTING HOLES ARE TO BE DUG TO A MINIMUM OF THREE TIMES THE WIDTH AND ONE FOOT DEEPER THAN THE SIZE OF THE ROOT BALL. NOTIFY LANDSCAPE ARCHITECT IF FIELD CONDITIONS WARRANT ADJUSTMENT OF PLANT LOCATIONS.
12. CONTRACTOR TO PROVIDE A FULL 1 YEAR GUARANTEE ON ALL PLANTS INSTALLED AND PROVIDE COMPLETE MAINTENANCE ON ALL WORK DONE BEGINNING ON THE DAY OF APPROVAL FROM OWNER'S REPRESENTATIVE AND CONTINUING FOR A THREE MONTH DURATION AT WHICH TIME OWNER'S REPRESENTATIVE WILL DECLARE JOB ACCEPTANCE.
13. ALL EXISTING PLANT MATERIAL SHOWN ON THIS PLAN IS TO BE PRESERVED UNLESS SPECIFICALLY NOTED OTHERWISE.
14. ALL SHRUBS AND GROUND COVER BEDS (EXISTING AND NEW), PLANTING BEDS, AND SHRUB MASSES SHALL HAVE A MINIMUM 3" DEEP SHREDDED HARDWOOD BARK MULCH. MULCH HEDGES IN A CONTINUOUS BED.
15. EXISTING GRASS TO BE REMOVED, IF PRESENT, AND TOPSOIL TO BE SPREAD SMOOTH AND HAND-RAKED TO REMOVE ALL ROCKS AND DEBRIS LARGER THAT 1 INCH IN DIAMETER PRIOR TO LAYING SOD OR SEEDING.
16. ALL AREAS DISTURBED BY CONSTRUCTION ARE TO BE RESTORED, FINE GRADED AND SEEDED. (SEE LANDSCAPE PLANS). SEEDING OR SODDING BY LANDSCAPE CONTRACTOR.
17. IF APPLICABLE LANDSCAPE CONTRACTOR TO COORDINATE WITH EXISTING OR PROPOSED IRRIGATION SYSTEM.



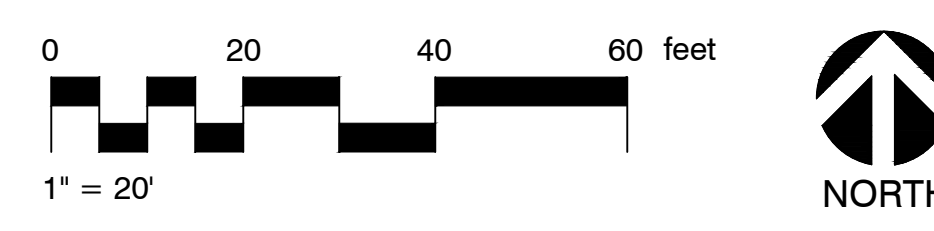
775 Yard Street, Suite 325  
Columbus, Ohio 43212  
p 614.764.0407  
f 614.764.0237  
www.ma-architects.com

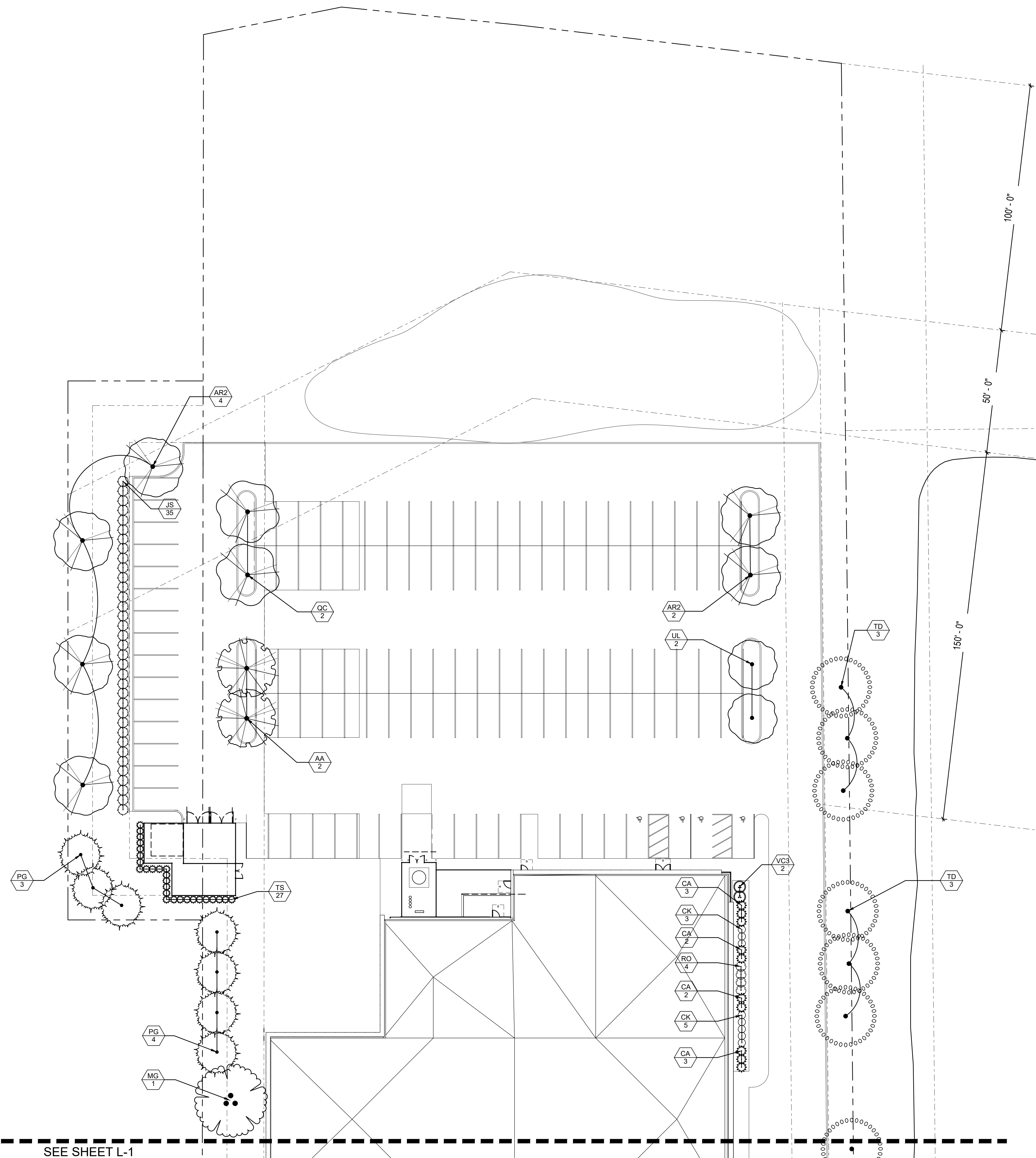
VOLUME 1: CORE & SHELL  
**MEDVET CLEVELAND - ANIMAL HOSPITAL**  
EMERALD PARKWAY, CLEVELAND, CUYAHOGA COUNTY

NO.	DATE	DESCRIPTION
10.18.21	PERMIT SET	

21036  
LANDSCAPE PLAN  
18 OCTOBER 2021

**kla studios**  
9240 Robinhood Circle Westerville Ohio 43082  
614.530.5273 bking@kla-studios.com www.kla-studios.com





**GENERAL PLANTING NOTES:**

1. SURVEY INFORMATION OBTAINED ELECTRONICALLY. KLA STUDIOS CANNOT ATTEST TO THE ACCURACY OR RELIABILITY OF LEGAL BOUNDARIES, EASEMENTS OR FIELD GATHERED DATA.
2. THE LOCATION OF THE EXISTING UNDERGROUND UTILITIES ARE SHOWN IN AN APPROXIMATE WAY ONLY AND HAVE NOT BEEN INDEPENDENTLY VERIFIED BY THE OWNER OR ITS REPRESENTATIVE. THE CONTRACTOR SHALL DETERMINE THE EXACT LOCATION OF ALL EXISTING UTILITIES PRIOR TO COMMENCING WORK AND AGREES TO BE FULLY RESPONSIBLE FOR ANY AND ALL DAMAGES WHICH MIGHT BE OCCASIONED BY THE CONTRACTOR'S FAILURE TO EXACTLY LOCATE AND PRESERVE ANY AND ALL UNDERGROUND UTILITIES.
3. ALL DIMENSIONS ARE TAKEN TO FACE OF CURB OR BUILDING WHERE APPLICABLE UNLESS OTHERWISE NOTED. USE DIMENSIONAL INFORMATION GIVEN. DO NOT SCALE DRAWINGS.
4. CONTRACTOR SHALL REFER QUESTIONS ON MATERIALS, FINISHES, LABOR, AND/OR PERFORMANCE STANDARDS NOT SPECIFIED HEREIN TO THE LANDSCAPE ARCHITECT.
5. ALL CHANGES TO DESIGN OR PLANT SUBSTITUTIONS ARE TO BE AUTHORIZED BY THE LANDSCAPE ARCHITECT.
6. CONSULT PLANT SCHEDULE FOR PLANT SIZES AND SPECIFICATIONS. CONTRACTOR IS RESPONSIBLE FOR ALL PLANTS DRAWN ON PLANS. PLANT LIST QUANTITIES ARE FOR CONVENIENCE ONLY.
7. ALL PLANTS TO CONFORM TO THE AMERICAN STANDARD FOR NURSERY STOCK (ANSI-Z60.1-2014) IN REGARDS TO SIZING, GROWING AND B&B SPECIFICATIONS.
8. ALL PROPOSED PLANTING BEDS TO BE TILLED TO A MINIMUM DEPTH OF 12".
9. ALL PLANTING BEDS TO BE FERTILIZED WITH 10-10-10 OR APPROVED EQUAL.
10. PLANTING HOLES TO BE DUG A MINIMUM OF TWICE THE WIDTH AND 6-8 INCHES DEEPER THAN THE SIZE OF THE ROOT BALL OF BOTH SHRUB AND TREE AND TO BE AMENDED WITH ORGANIC SOIL CONDITIONER.
11. IN AREAS WHERE BEDROCK OR HEAVILY COMPACTED ROCK FILL IS ENCOUNTERED, THE PLANTING HOLES ARE TO BE DUG TO A MINIMUM OF THREE TIMES THE WIDTH AND ONE FOOT DEEPER THAN THE SIZE OF THE ROOT BALL. NOTIFY LANDSCAPE ARCHITECT IF FIELD CONDITIONS WARRANT ADJUSTMENT OF PLANT LOCATIONS.
12. CONTRACTOR TO PROVIDE A FULL 1 YEAR GUARANTEE ON ALL PLANTS INSTALLED AND PROVIDE COMPLETE MAINTENANCE ON ALL WORK DONE BEGINNING ON THE DAY OF APPROVAL FROM OWNER'S REPRESENTATIVE AND CONTINUING FOR A THREE MONTH DURATION AT WHICH TIME OWNER'S REPRESENTATIVE WILL DECLARE JOB ACCEPTANCE
13. ALL EXISTING PLANT MATERIAL SHOWN ON THIS PLAN IS TO BE PRESERVED UNLESS SPECIFICALLY NOTED OTHERWISE.
14. ALL SHRUBS AND GROUND COVER BEDS (EXISTING AND NEW), PLANTING BEDS, AND SHRUB MASSES SHALL HAVE A MINIMUM 3" DEEP SHREDDED HARDWOOD BARK MULCH. MULCH HEDGES IN A CONTINUOUS BED.
15. EXISTING GRASS TO BE REMOVED, IF PRESENT, AND TOPSOIL TO BE SPREAD SMOOTH AND HAND-RAKED TO REMOVE ALL ROCKS AND DEBRIS LARGER THAT 1 INCH IN DIAMETER PRIOR TO LAYING SOD OR SEEDING.
16. ALL AREAS DISTURBED BY CONSTRUCTION ARE TO BE RESTORED, FINE GRADED AND SEEDED. (SEE LANDSCAPE PLANS) . SEEDING OR SODDING BY LANDSCAPE CONTRACTOR.
17. IF APPLICABLE LANDSCAPE CONTRACTOR TO COORDINATE WITH EXISTING OR PROPOSED IRRIGATION SYSTEM.



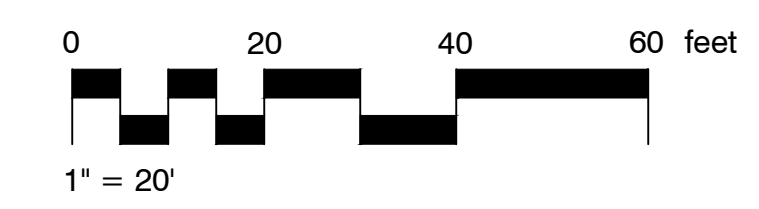
775 Yard Street, Suite 325  
 Columbus, Ohio 43212  
 p 614 764 0407  
 f 614 764 0237  
 www.ma-architects.com

VOLUME 1: CORE & SHELL  
**MEDVET CLEVELAND - ANIMAL  
 HOSPITAL**  
 EMERALD PARKWAY, CLEVELAND, CUYAHOGA COUNTY

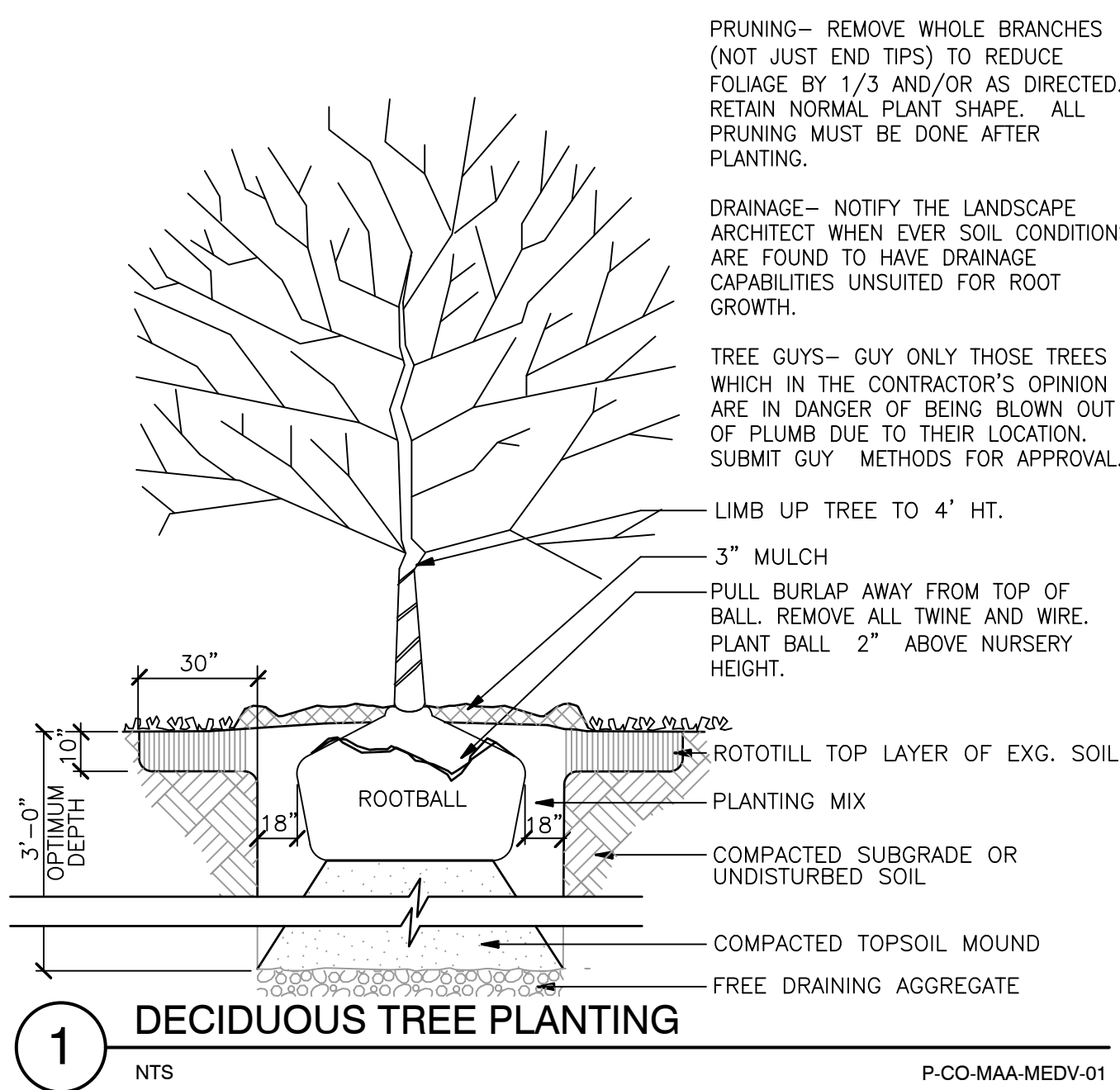
10.18.21	PERMIT SET

21036  
 LANDSCAPE PLAN  
 18 OCTOBER 2021  
**L-2**

**kla studios**  
 9240 Robinhood Circle Westerville Ohio 43082  
 614.530.5273 bking@kla-studios.com www.kla-studios.com

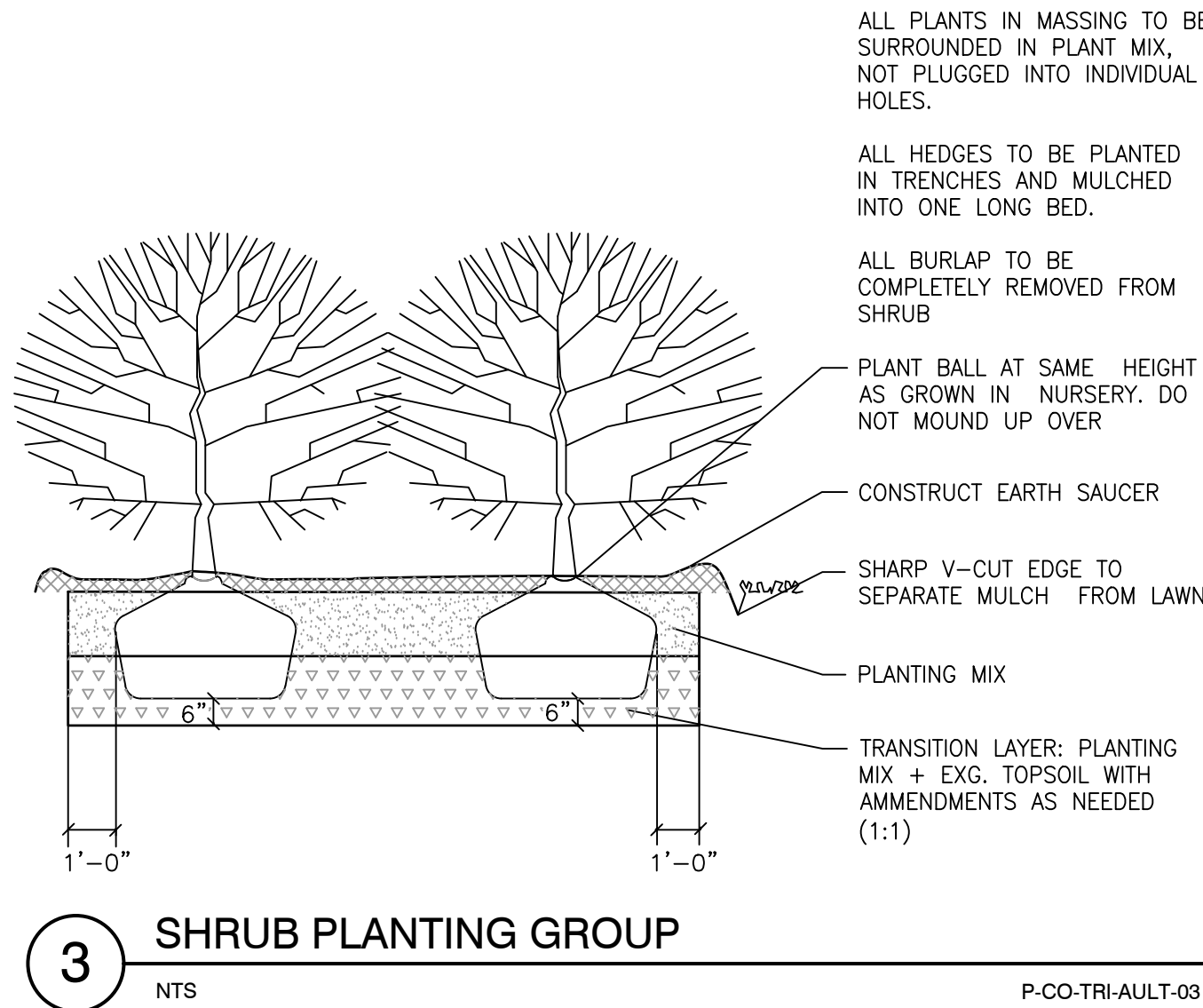


SEE SHEET L-1



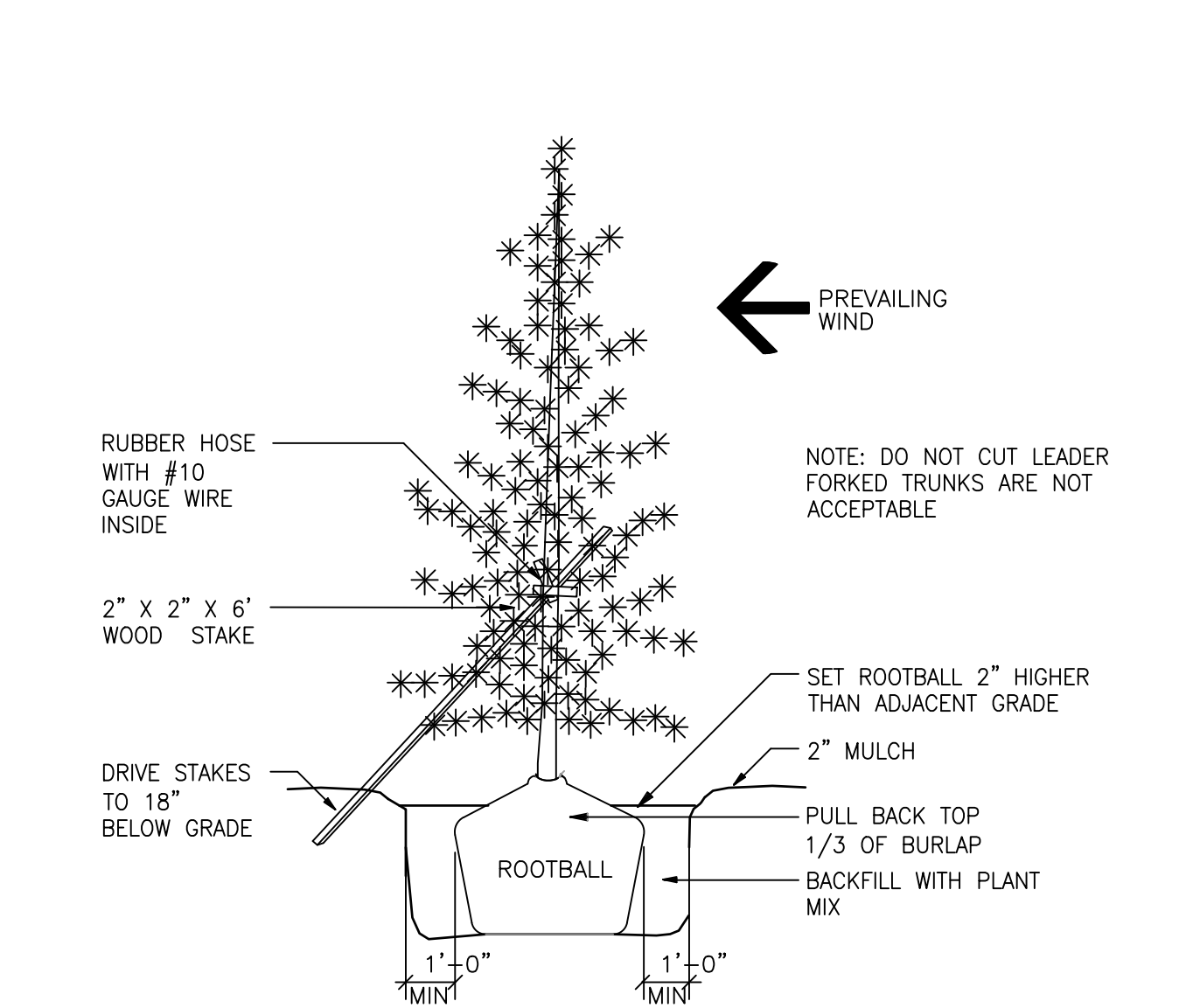
1 DECIDUOUS TREE PLANTING

NTS P-CO-MAA-MEDV-01



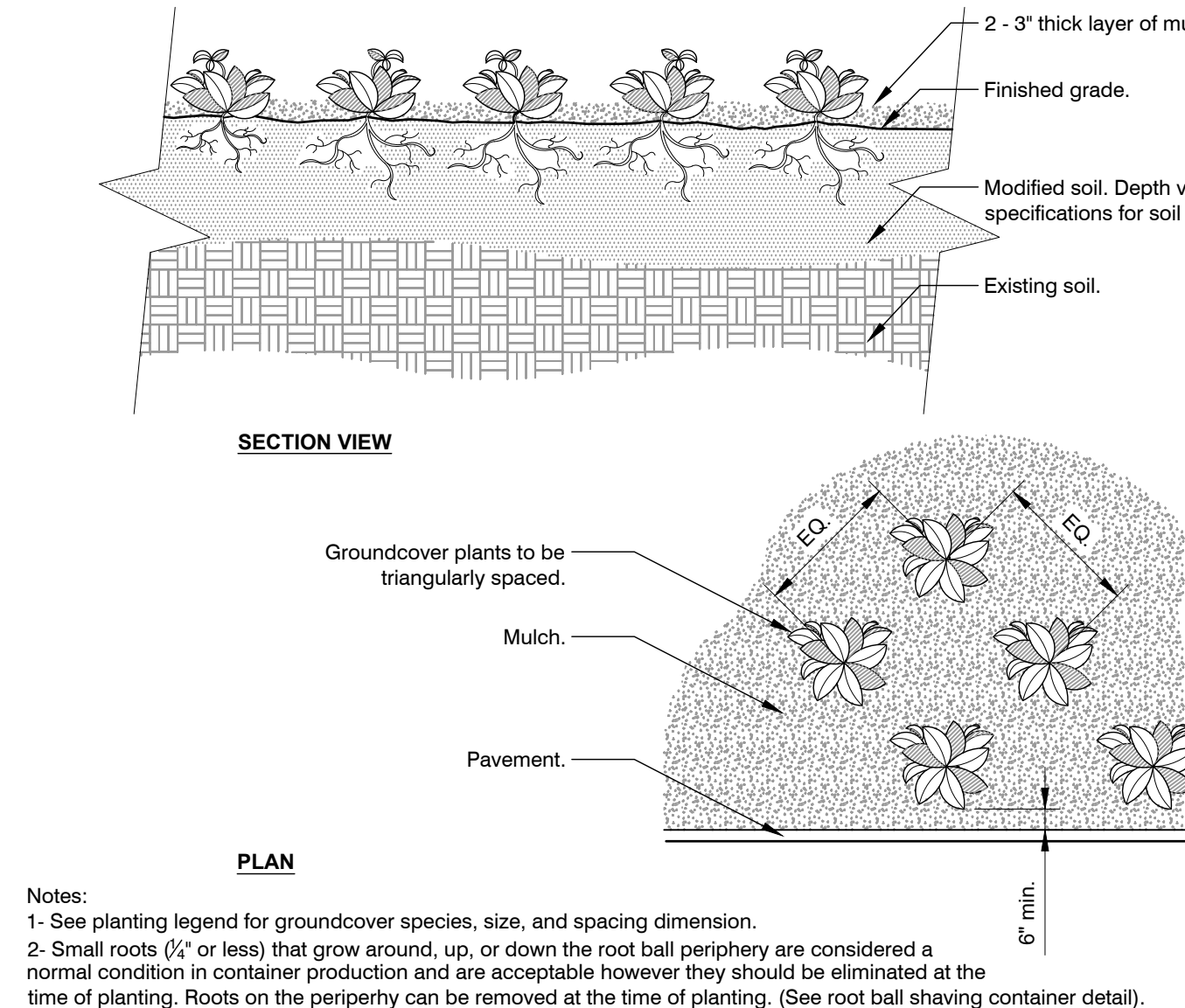
3 SHRUB PLANTING GROUP

P-CO-TRI-AULT-03



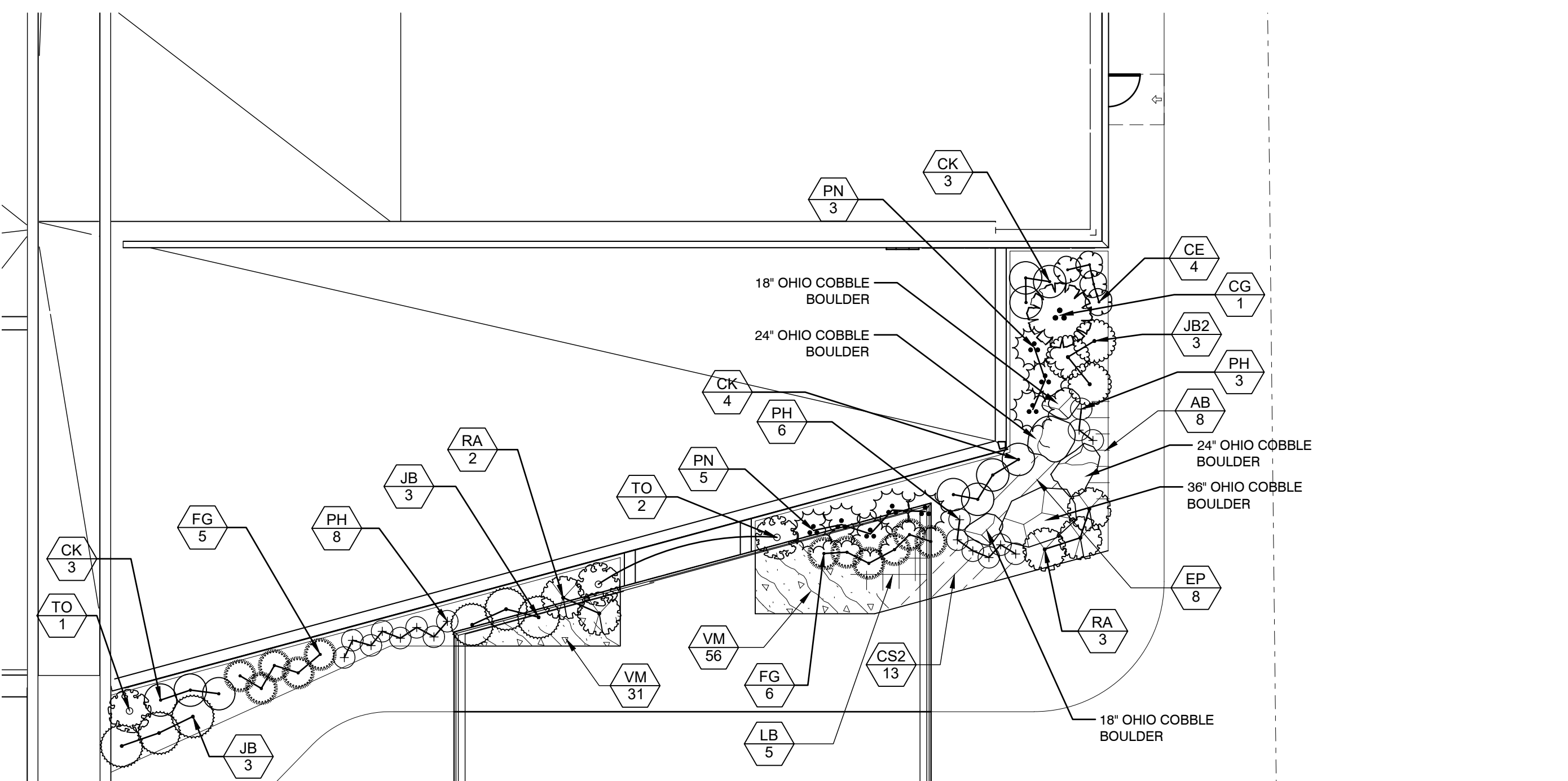
2 EVERGREEN TREE PLANTING

NTS P-CO-MAA-MEDV-03



4 GROUNDCOVER

3/4\"/>



5 LOBBY ENTRY

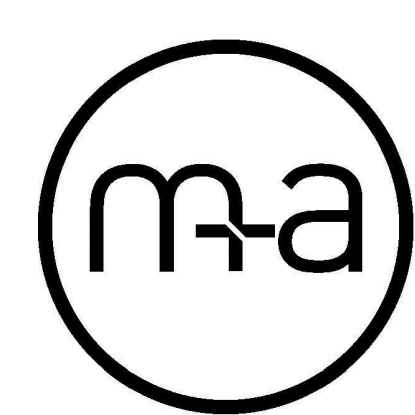
1\"/>

PLANT SCHEDULE

TREES	CODE	BOTANICAL NAME	COMMON NAME	SIZE	CONTAINER	QTY	REMARKS
	AA	Acer freemanii 'Autumn Blaze'	Autumn Blaze Maple	2" Cal.	B&B	2	
	AR2	Acer rubrum 'October Glory' TM	October Glory Maple	2" Cal.	B&B	6	
	CG	Cedrus atlantica 'Glauca Pendula'	Weeping Blue Atlas Cedar	4' Ht.	B&B	1	SPECIMAN TREE
	CO	Cercis canadensis 'Covey' 'Lavender Twist'	Lavender Twist Redbud	1.5" Cal.	B&B	3	
	CA	Chamaecyparis nootkatensis 'Green Arrow'	Green Arrow Alaskan Cedar	4' Ht.	B&B	10	
	MP	Malus x 'Prairifire'	Prairifire Crab Apple	1.5" Cal.	B&B	3	
	MS	Malus x 'Snowdrift'	Snowdrift Crab Apple	1.5" Cal.	B&B	3	
	MG	Metasequoia glyptostroboides	Dawn Redwood	2" Cal.	B&B	4	
	PG	Picea glauca	White Spruce	5' Ht.	B&B	7	
	PS	Pinus strobus	White Pine	5' Ht.	B&B	5	
	QC	Quercus coccinea	Scarlet Oak	2" Cal.	B&B	2	
	SI	Syringa reticulata 'Ivory Silk'	Ivory Silk Japanese Tree Lilac	2" Cal.	B&B	3	
	TD	Taxodium distichum	Bald Cypress	2" Cal.	B&B	14	
	TS	Thuja occidentalis 'Smaragd'	Emerald Green Arborvitae	5' Ht.	B&B	27	
	TC2	Tilia cordata	Littleleaf Linden	2" Cal.	B&B	4	
	UL	Ulmus x 'Liberty'	Elm	2" Cal.	B&B	2	
	ZV	Zelkova serrata 'Village Green'	Sawleaf Zelkova	2" Cal.	B&B	10	

SHRUBS	CODE	BOTANICAL NAME	COMMON NAME	SIZE	CONTAINER	QTY	REMARKS
	BG	Buxus x 'Green Velvet'	Boxwood	3 gal.		62	
	CK	Calamagrostis x acutiflora 'Karl Foerster'	Feather Reed Grass	3 gal.		24	
	CE	Chamaecyparis pisifera 'Lime Pie'	'Lime Pie' Sawara Cypress	3 gal.		4	
	FG	Fothergilla gardenii	Dwarf Fothergilla	3 gal.		11	
	JS	Juniperus chinensis 'Sea Green'	Sea Green Juniper	3 gal.		77	
	JB2	Juniperus conferta 'Blue Pacific'	Blue Pacific Juniper	3 gal.		3	
	JB	Juniperus sabina 'Broadmoor'	Broadmoor Juniper	3 gal.		12	
	PH	Pennisetum alopecuroides 'Hameln'	Hameln Dwarf Fountain Grass	1 gal.		17	
	RO	Physocarpus opulifolius	Summer Wine Nine Bark	3 gal.		4	
	PN	Picea abies 'Nidiformis'	Nest Spruce	3 gal.		8	
	RA	Rhus aromatica 'Gro-Low'	Gro-Low Fragrant Sumac	3 gal.		5	
	SL2	Schizachyrium scoparium	Little Bluestem Grass	1 gal.		17	
	SN	Sorghastrum nutans	Indian Grass	2 gal.		19	
	TO	Thuja occidentalis 'Zematik'	Zematik Arborvitae	3 gal.		3	AVAILABLE AT DANNAHER LANDSCAPE AND NURSURY, GALENA OHIO
	VC3	Viburnum carlesii	Korean Spice Viburnum	5 gal.		2	

GROUND COVERS	CODE	BOTANICAL NAME	COMMON NAME	SIZE	CONTAINER	SPACING	QTY	REMARKS
	AB	Aster x 'Blue Autumn'	Hardy Aster	4"pot		18" o.c.	8	
	CS2	Coreopsis verticillata 'Sienna Sunset'	Sienna Sunset Tickseed	4"pot		18" o.c.	13	
	EP	Echinacea purpurea	Purple Coneflower	4"pot		18" o.c.	8	
	LB	Liriope muscari 'Big Blue'	Big Blue Lilyturf	1 gal.		24" o.c.	5	
	VM	Vinca major	Periwinkle	FLAT		12" o.c.	87	

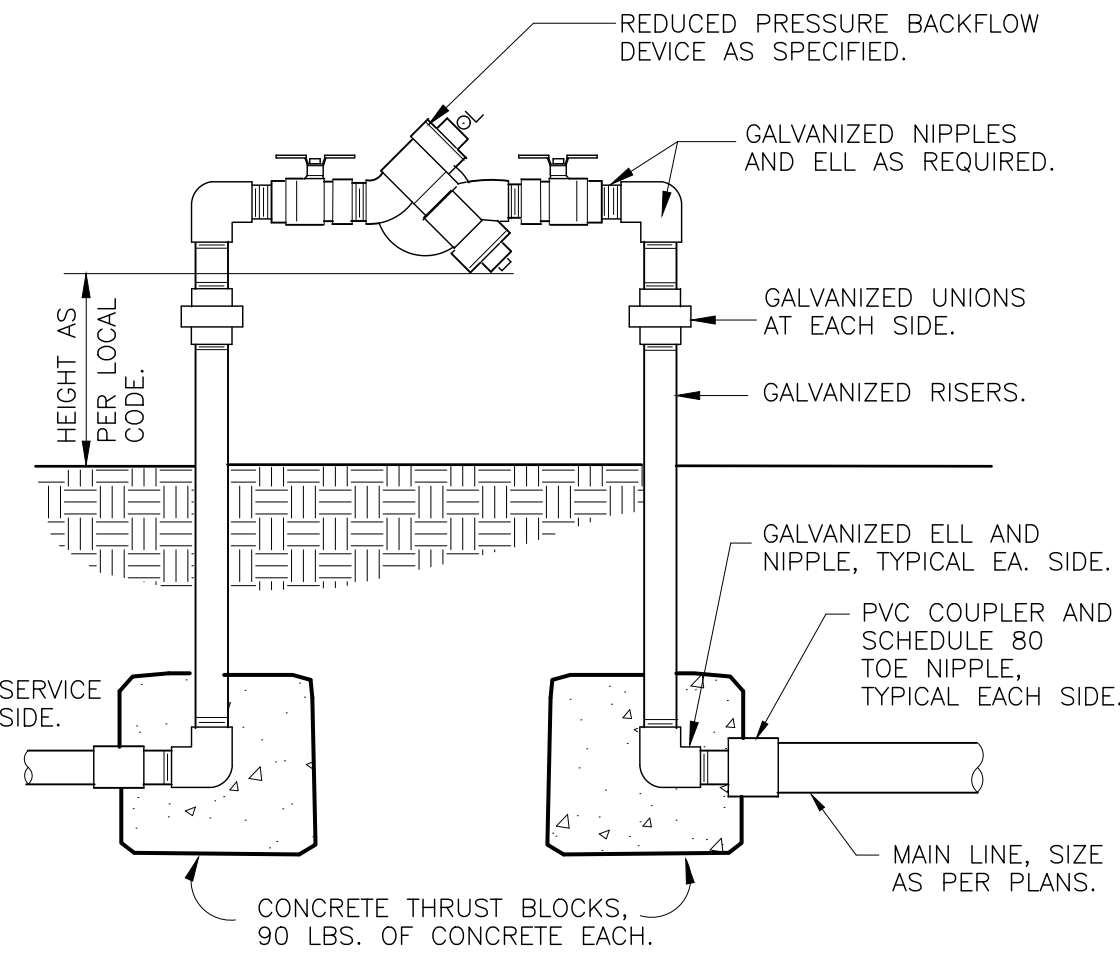


775 Yard Street, Suite 325  
Columbus, Ohio 43212  
p 614 764 0407  
f 614 764 0237  
www.ma-architects.com

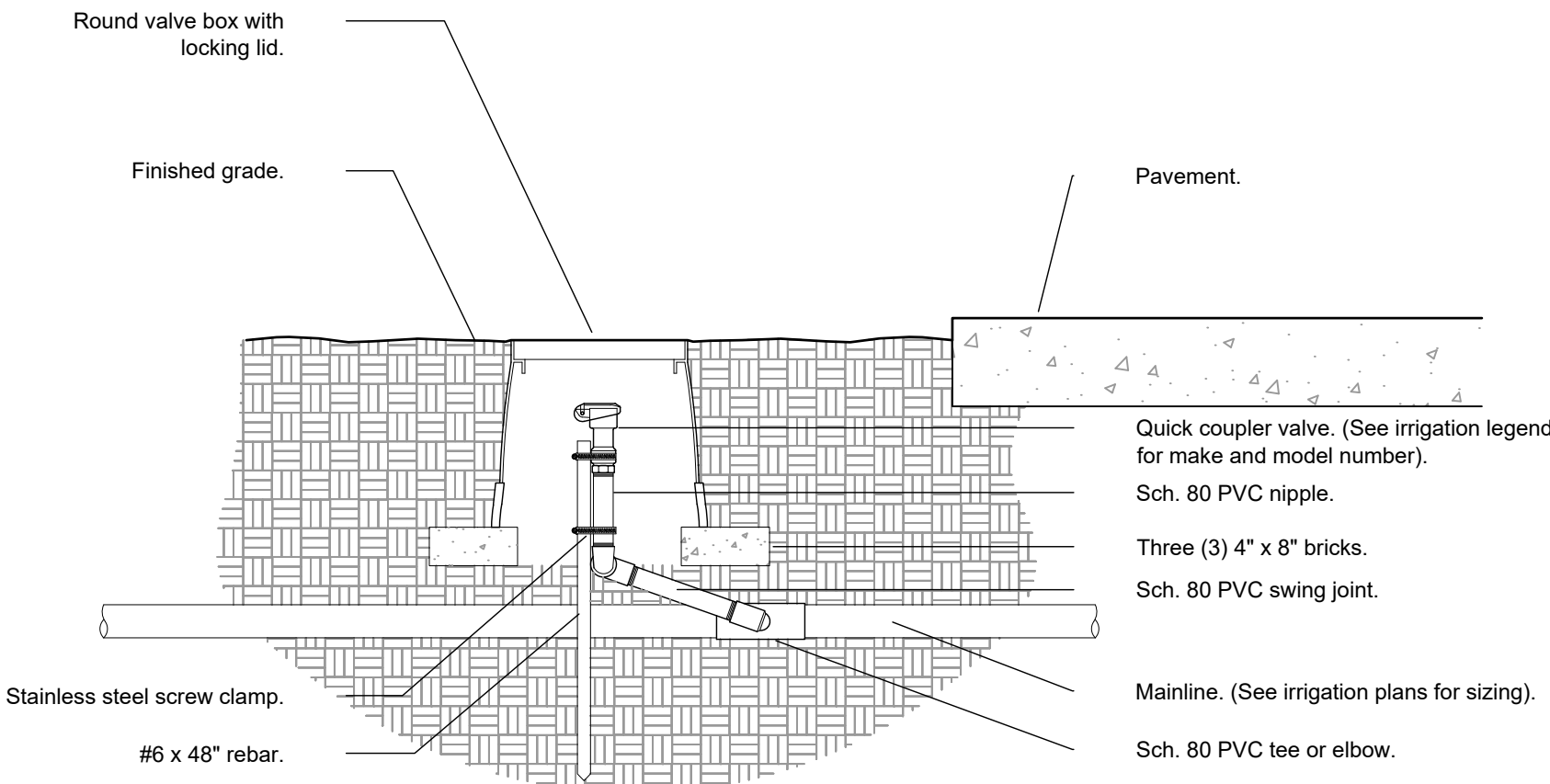
VOLUME 1: CORE & SHELL  
**MEDVET CLEVELAND - ANIMAL HOSPITAL**  
EMERALD PARKWAY, CLEVELAND, CUYAHOGA COUNTY

NO.	DATE	DESCRIPTION
10.18.21	PERMIT SET	

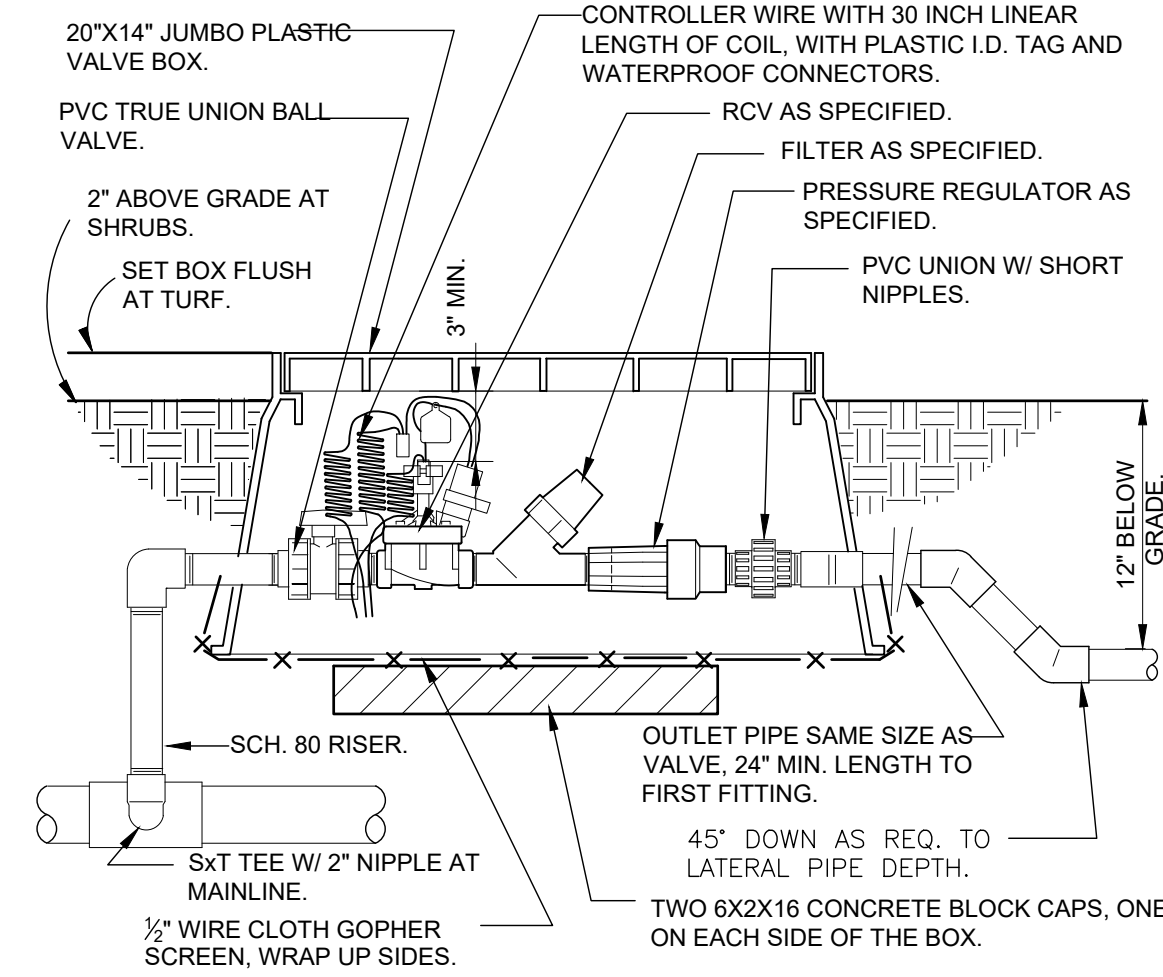
21036  
PLANT LIST AND DETAILS  
18 OCTOBER 2021  
L-3



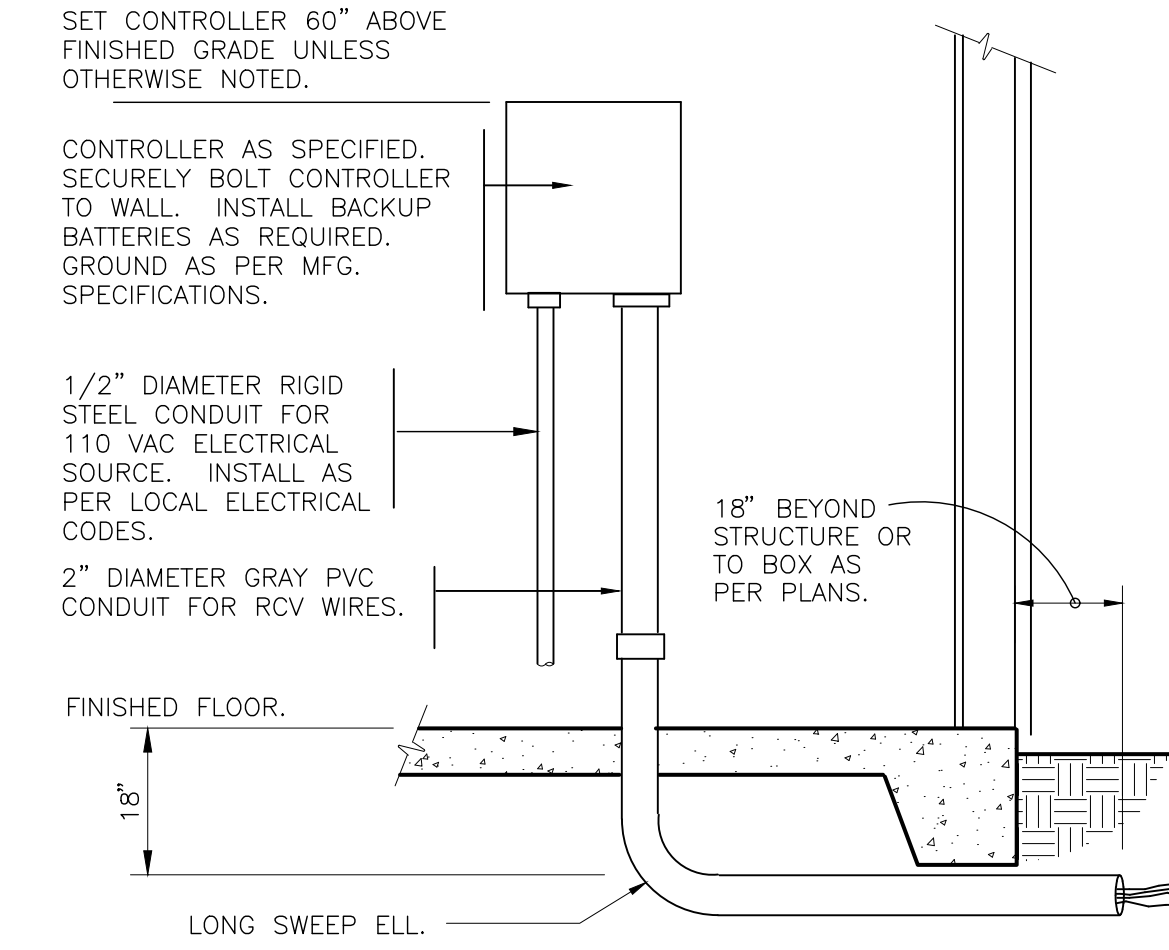
**1** REDUCED PRESSURE BACKFLOW DEVICE  
1" = 1'-0" FX-IR-FX-BACK-03



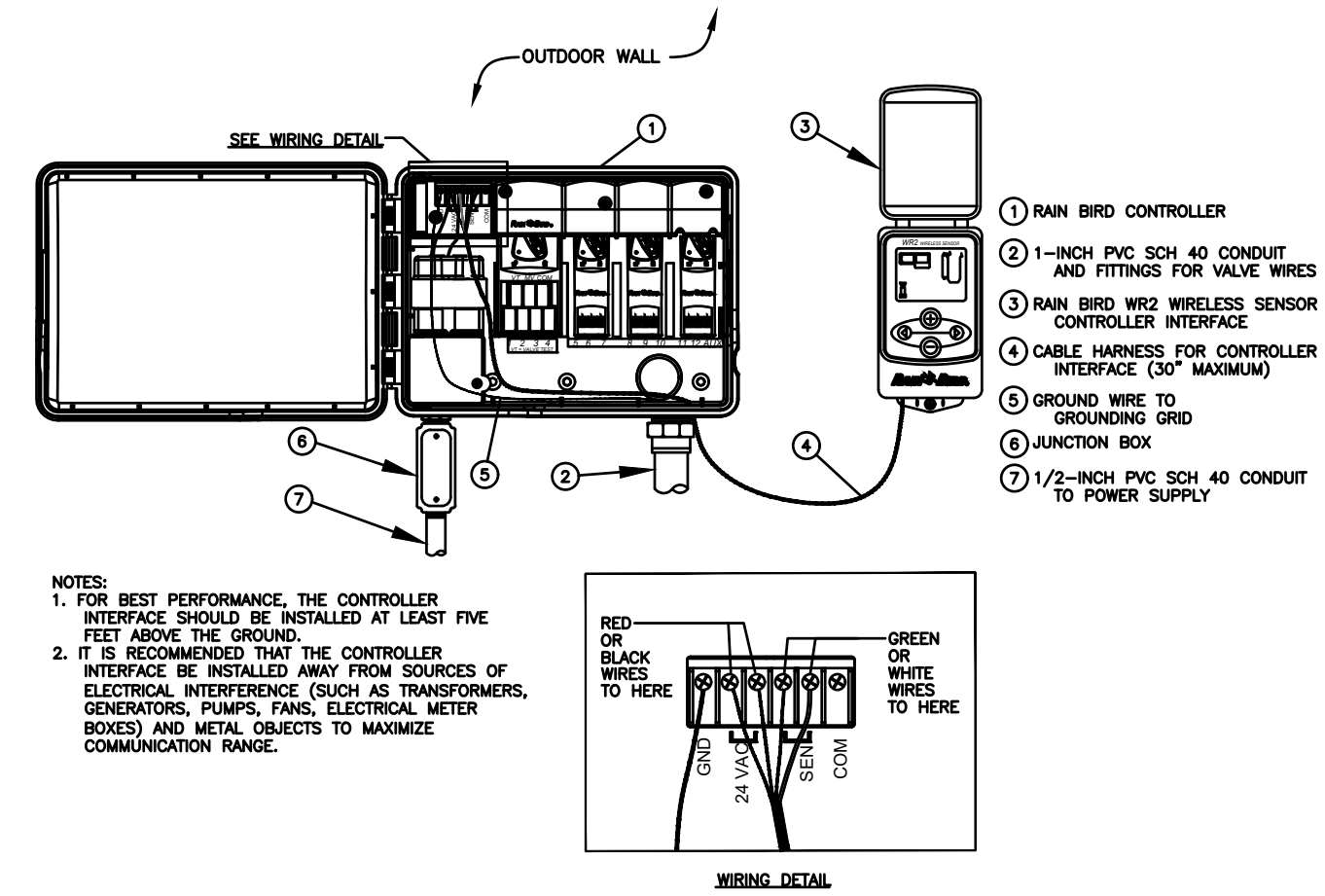
**2** QUICK COUPLER VALVE  
1 1/2" = 1'-0" URBAN TREE FOUNDATION © 2014  
OPEN SOURCE FREE TO USE  
DETAIL-FILE



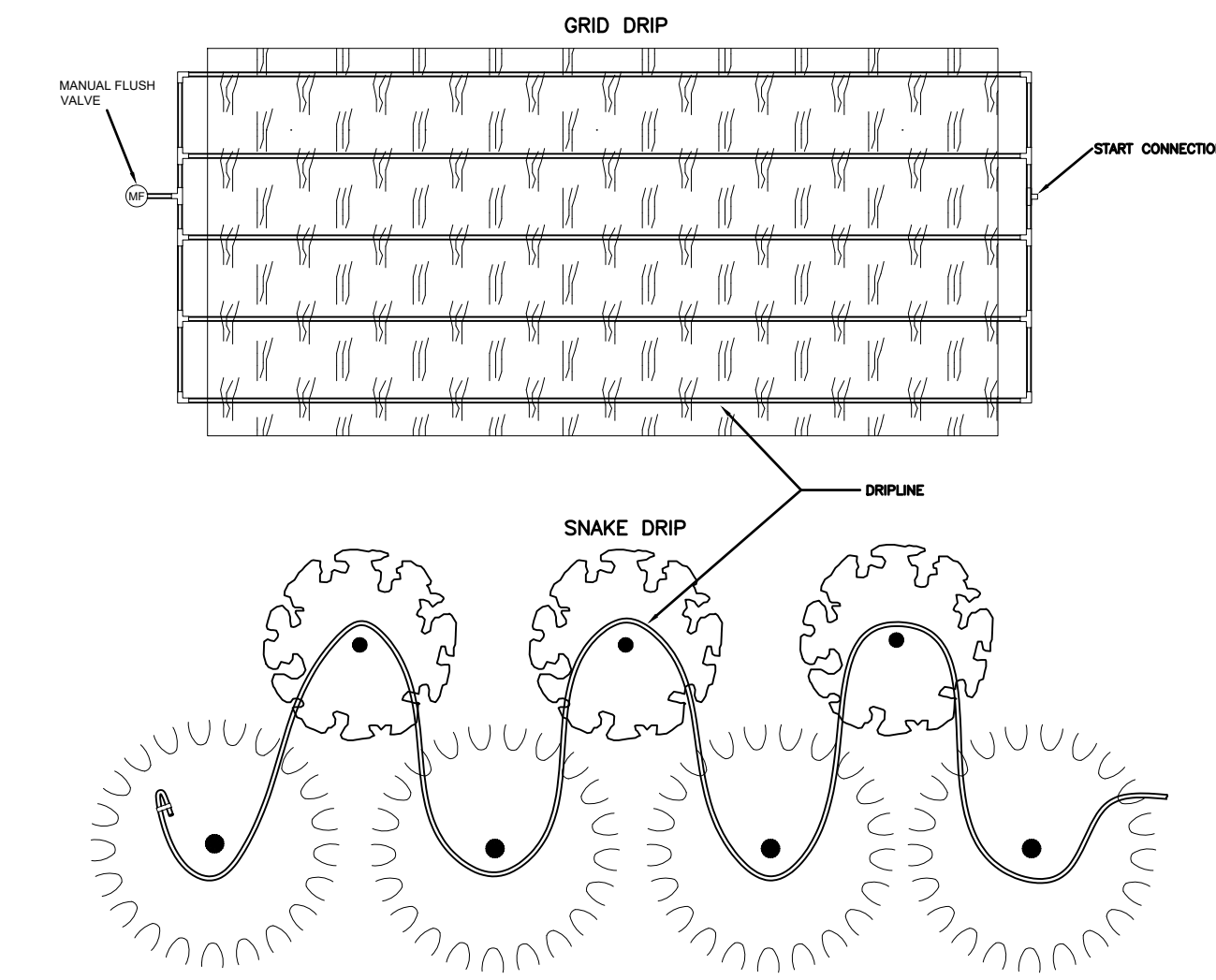
**3** 1" DRIP VALVE/FILTER/REGULATOR  
1 1/2" = 1'-0" FX-IR-FX-DRIP-12



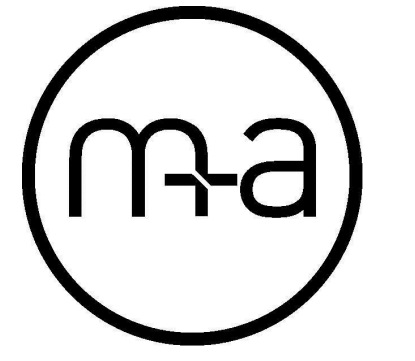
**4** INTERIOR WALL MOUNT CONTROLLER  
1" = 1'-0" FX-IR-FX-CONT-20



**5** WR2 WIRELESS RAIN SENSOR  
NTS



**6** TYPICAL DRIP TUBING LAYOUT  
NTS



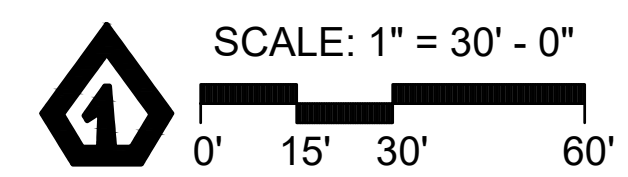
775 Yard Street, Suite 325  
Columbus, Ohio 43212  
p 614.764.0407  
f 614.764.0237  
www.ma-architects.com

VOLUME 1: CORE & SHELL  
**MEDVET CLEVELAND - ANIMAL HOSPITAL**  
EMERALD PARKWAY, CLEVELAND, CUYAHOGA COUNTY



1-800-347-4272  
http://www.projects-services.siteone.com  
650 Stephenson Highway  
Troy, Michigan 48083  
Phone 248.588.2100  
Fax 248.588.3528  
www.Siteone.com  
800.347.4272  
Project Services Number: 267750  
**MEDVET COLUMBUS**  
WESTERVILLE, OH, 43082  
Design Date: 10/13/21  
Drawn By: CH  
Checked By: C.PERRY

**kla studios**  
9240 Robinhood Circle Westerville Ohio 43082  
614.530.5273 bking@kla-studios.com www.kla-studios.com



10-18-21	PERMIT SET

21036  
18 OCTOBER 2021  
**IRR-2**  
m-a architects