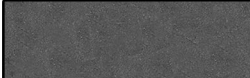
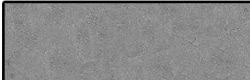

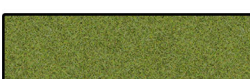









A B C D E F

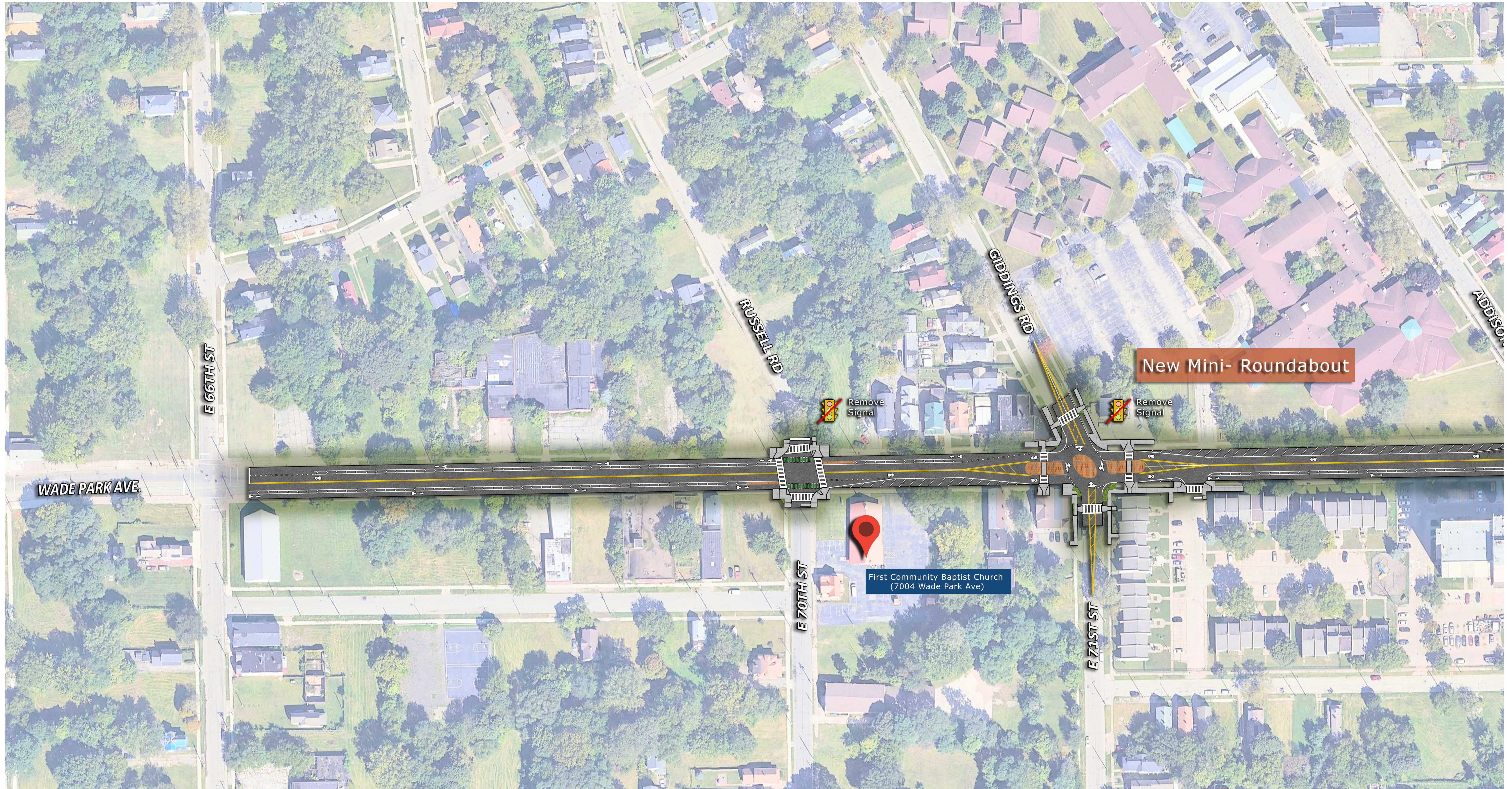


-  New Asphalt
-  Existing Asphalt
-  Sidewalk
-  Grass
-  Remove Signal
-  Existing Traffic Signal to Remain
-  New Traffic Signal
-  New Stop Sign
-  Locations of Interest

Wade Park Improvements

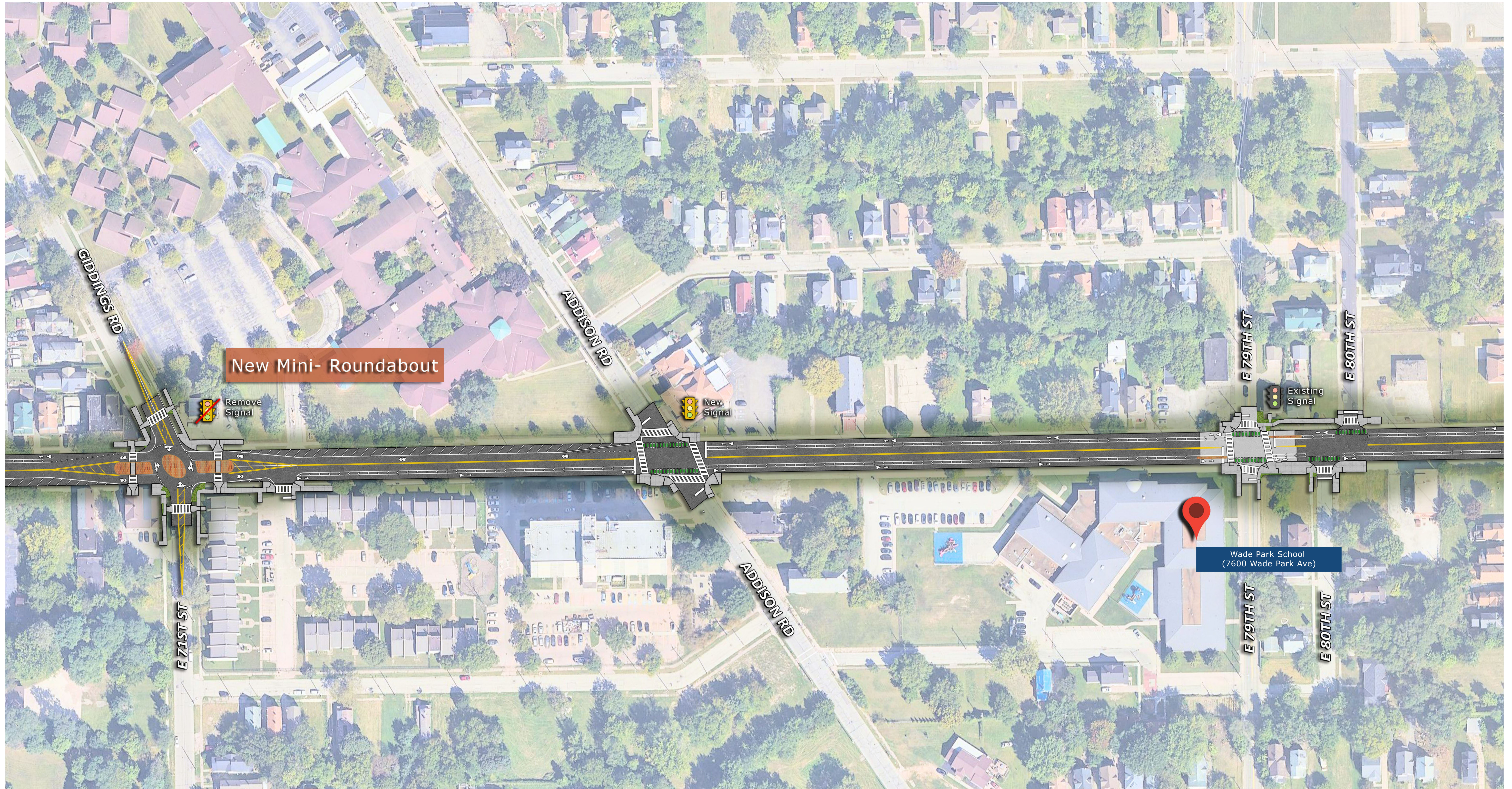
ALL COLORS AND MATERIALS REPRESENTED ARE A CLOSE APPROXIMATION AND SHOULD BE CONSIDERED VISUAL DESIGN INTENT ONLY. THIS DOCUMENT IS NOT TO BE USED FOR CONSTRUCTION, BID, RELIANCE OR IMPLEMENTATION.

A



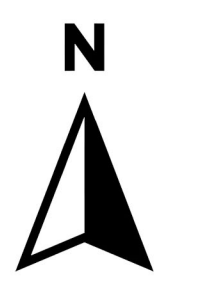
Wade Park Improvements

B



Wade Park Improvements

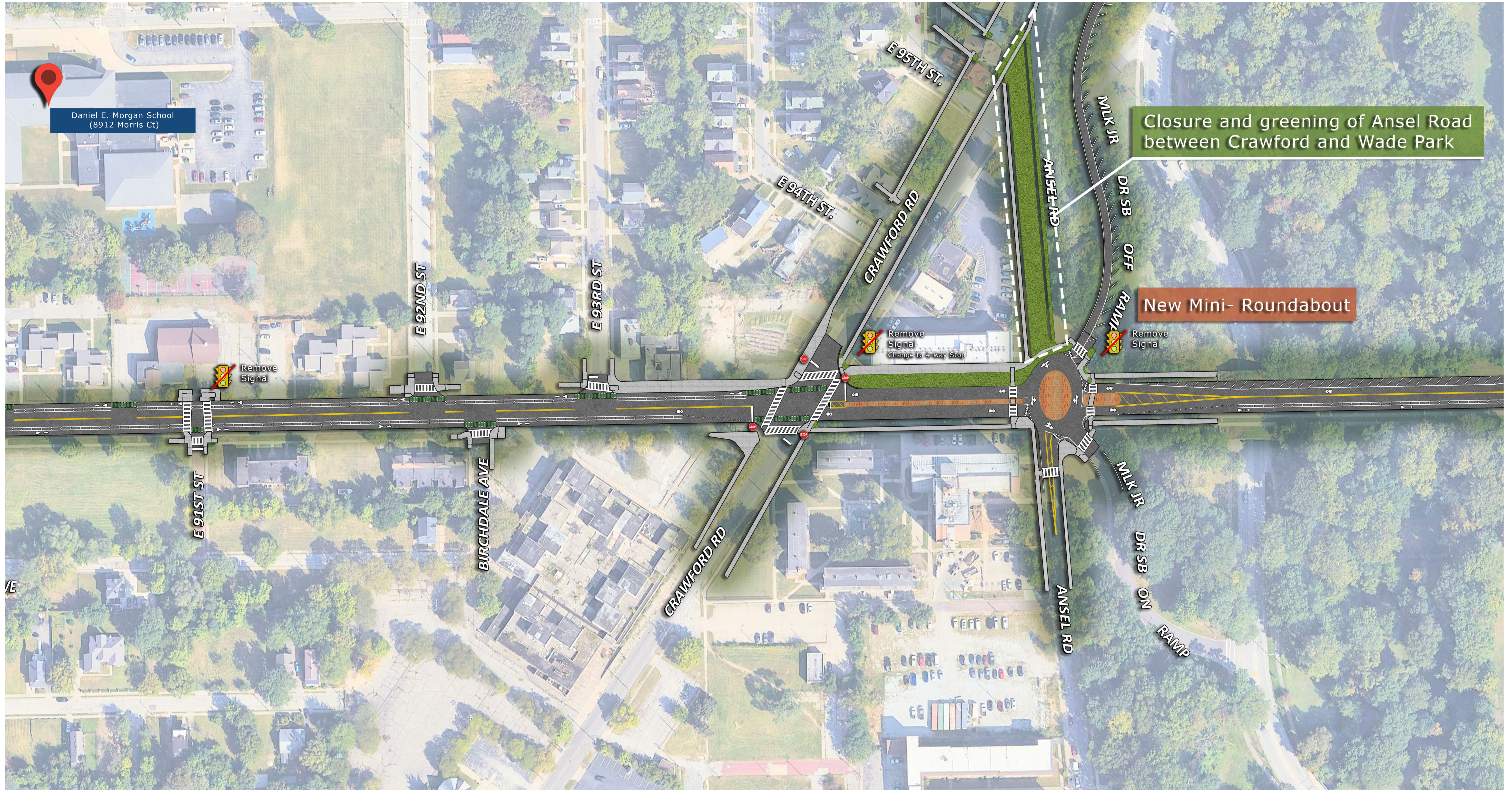
C



Wade Park Improvements

ALL COLORS AND MATERIALS REPRESENTED ARE A CLOSE APPROXIMATION AND SHOULD BE CONSIDERED VISUAL DESIGN INTENT ONLY. THIS DOCUMENT IS NOT TO BE USED FOR CONSTRUCTION, BID, RELIANCE OR IMPLEMENTATION.

D



Wade Park Improvements

ALL COLORS AND MATERIALS REPRESENTED ARE A CLOSE APPROXIMATION AND SHOULD BE CONSIDERED VISUAL DESIGN INTENT ONLY. THIS DOCUMENT IS NOT TO BE USED FOR CONSTRUCTION, BID, RELIANCE OR IMPLEMENTATION.



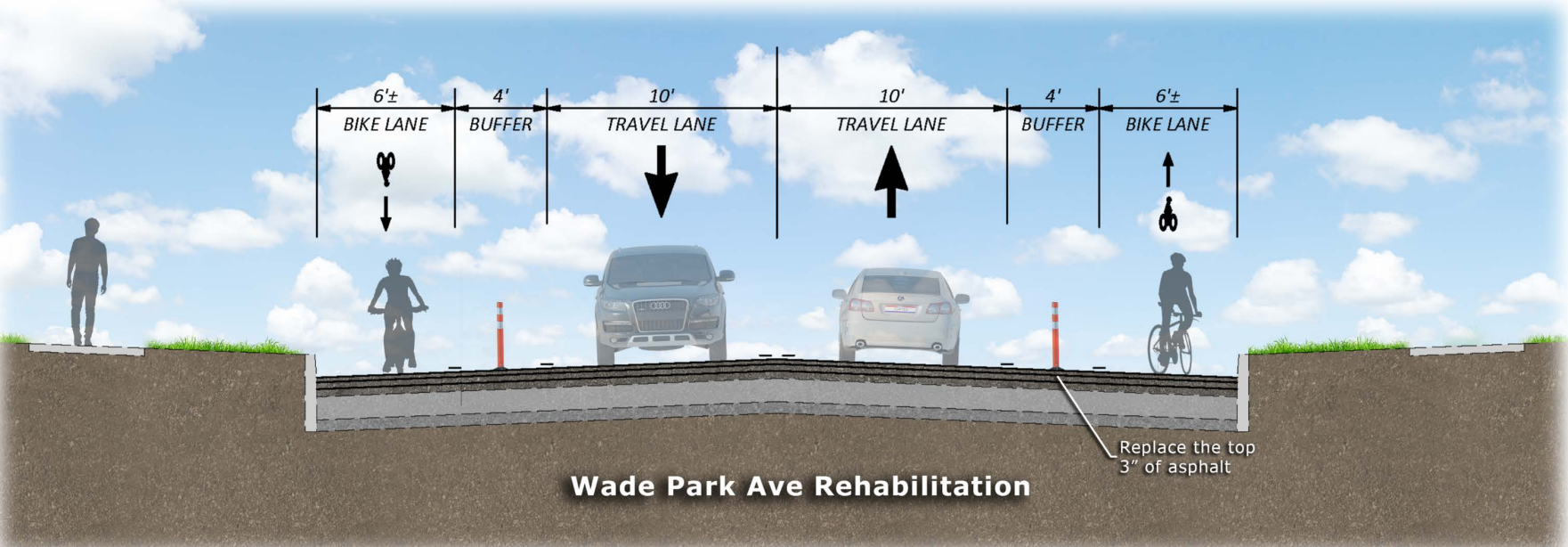
Wade Park Improvements

F

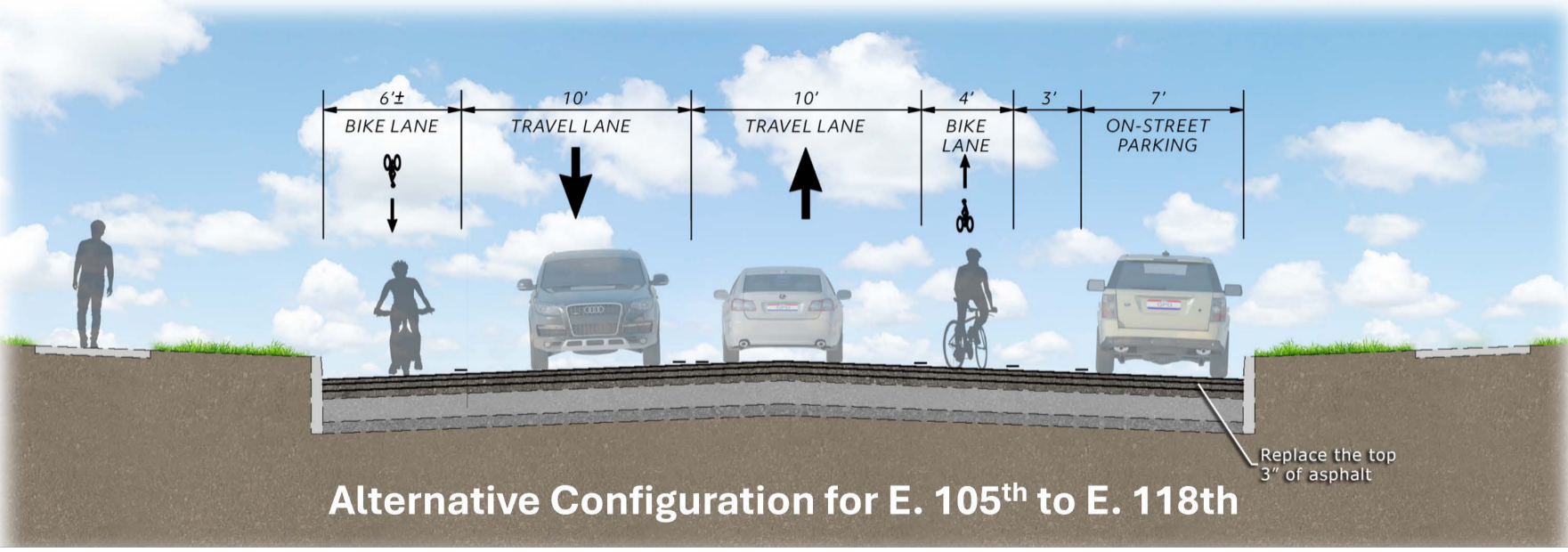


Wade Park Improvements

ALL COLORS AND MATERIALS REPRESENTED ARE A CLOSE APPROXIMATION AND SHOULD BE CONSIDERED VISUAL DESIGN INTENT ONLY. THIS DOCUMENT IS NOT TO BE USED FOR CONSTRUCTION, BID, RELIANCE OR IMPLEMENTATION.



Wade Park Ave Rehabilitation



Alternative Configuration for E. 105th to E. 118th