



CITY OF CLEVELAND  
Mayor Justin M. Bibb

# Wade Park Avenue

## E. 66<sup>th</sup> to E. 118th

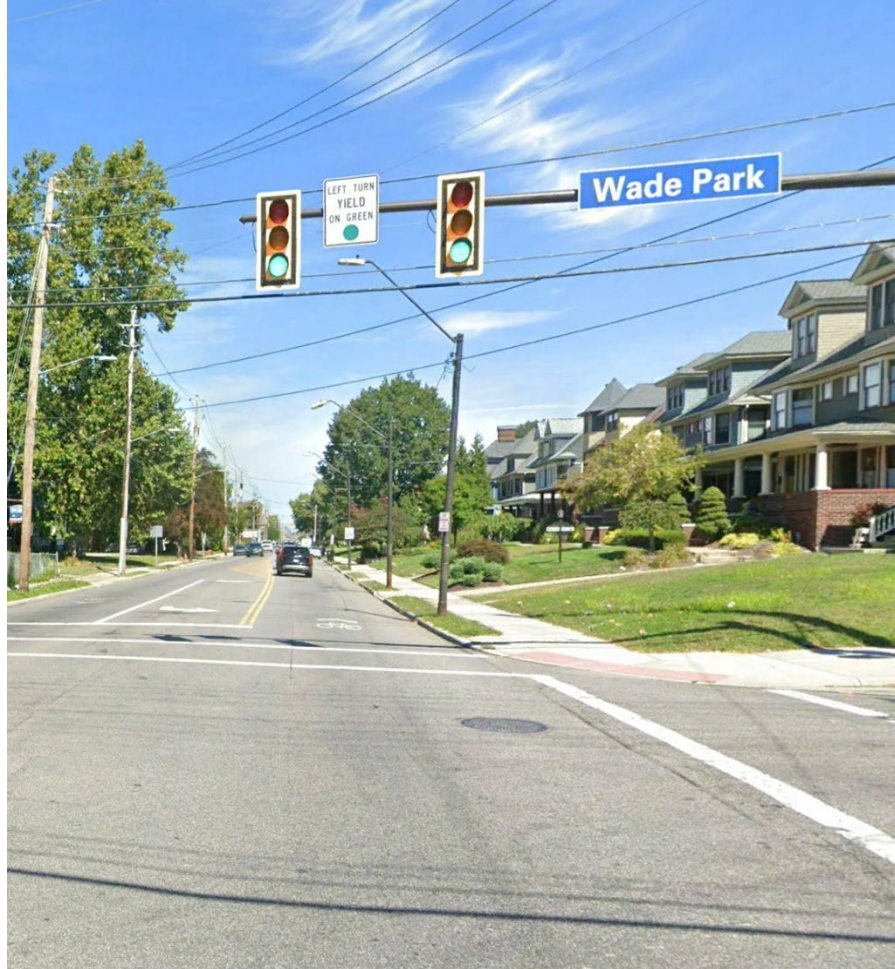
Project Overview

City of Cleveland  
Public Meeting | April 16<sup>th</sup> | 5:30 PM



# Meeting Agenda

---



## Welcome & Purpose of Meeting

- Stephanie D. Howse-Jones  
*Council Member, Ward 8*

## Opening Remarks & Team Introduction

- James DeRosa  
*Director, Mayor's Office of Capital Projects*

## Project Overview

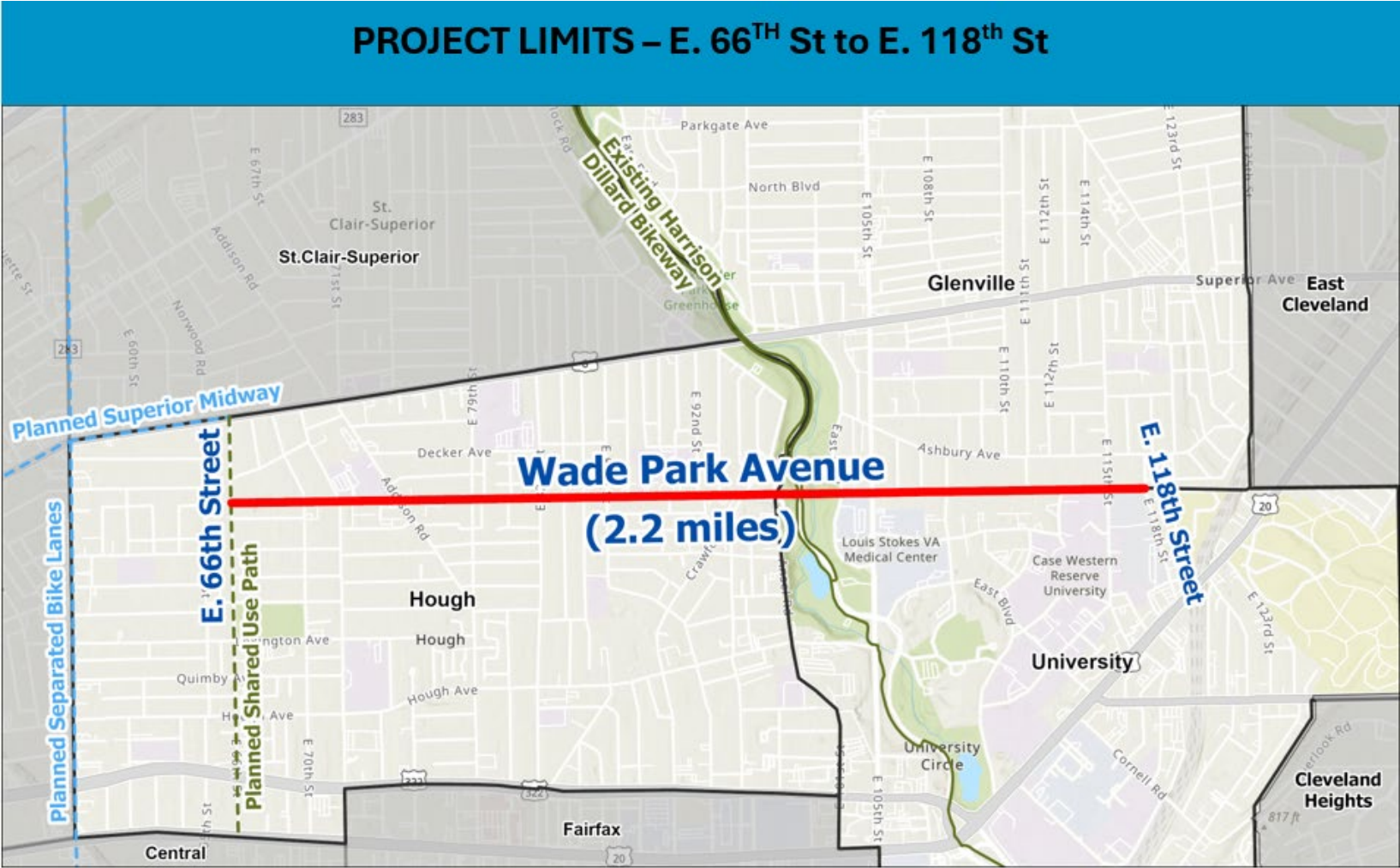
- Elida Rreza, P.E.
- Cameron Roberts, AICP  
*City of Cleveland, Division of Engineering & Construction*

## Project Work Scope

- David Neumeyer, P.E.  
*Design Consultant and Project Manager/GPD Group*



# Project Area



# Project Overview and Objective

---

## Estimated Cost

- \$12 Million

## Project Schedule

- Design Complete: September 2026
- Bid/Award: Spring 2027
- Construction Starts: May 2027
- Construction Duration: 13 months

## Project Funding

### Federal

- Northeast Ohio Areawide Coordinating Agency (NOACA)

### State

- Ohio Department of Transportation (ODOT) Safety Funds
- Ohio Public Works Commission

### Local

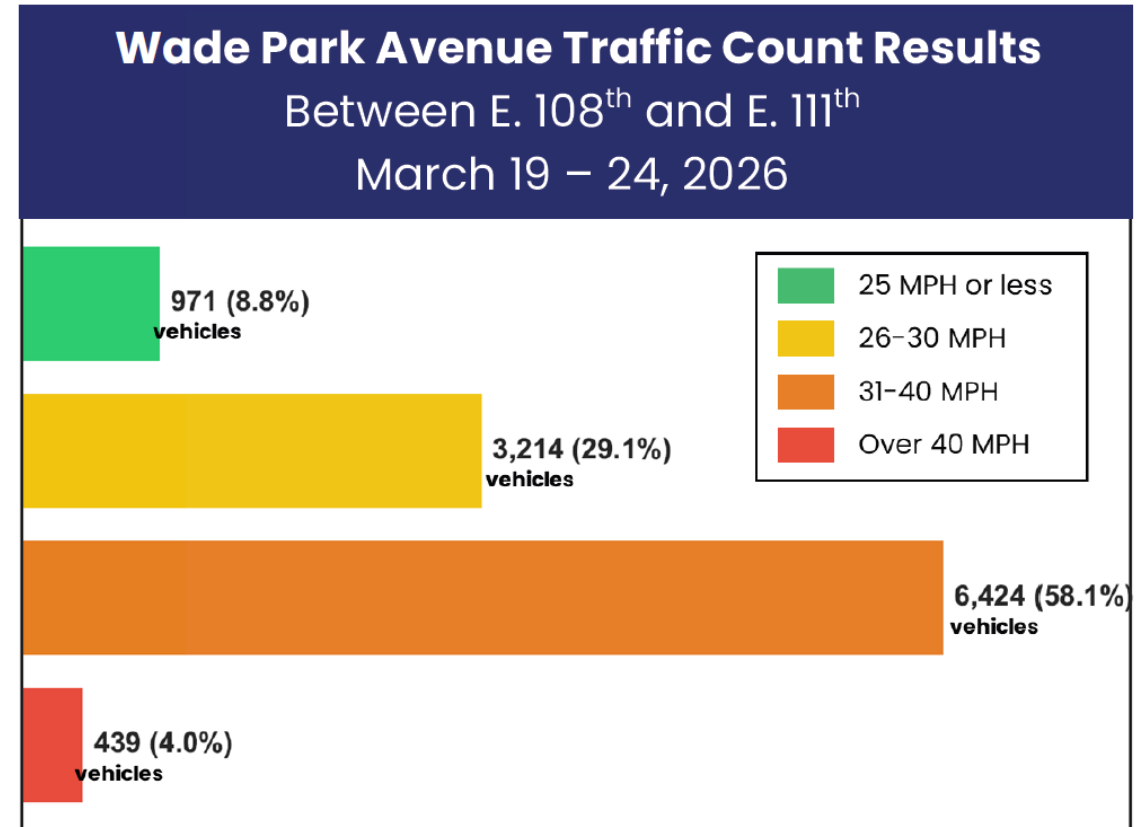
- Cleveland Road & Bridge Bonds



# Creating a Safer Wade Park

We are working to create a safer street for **everyone**

- Over 90% of drivers on Wade Park Ave are traveling above the 25 MPH speed limit
- 82 crashes occurred on Wade Park Ave between 2021 and 2025. Over 75% occurred at intersections
- Wade Park Ave is often mistaken as a 4-lane road due to wide lane widths and curbside parking restrictions

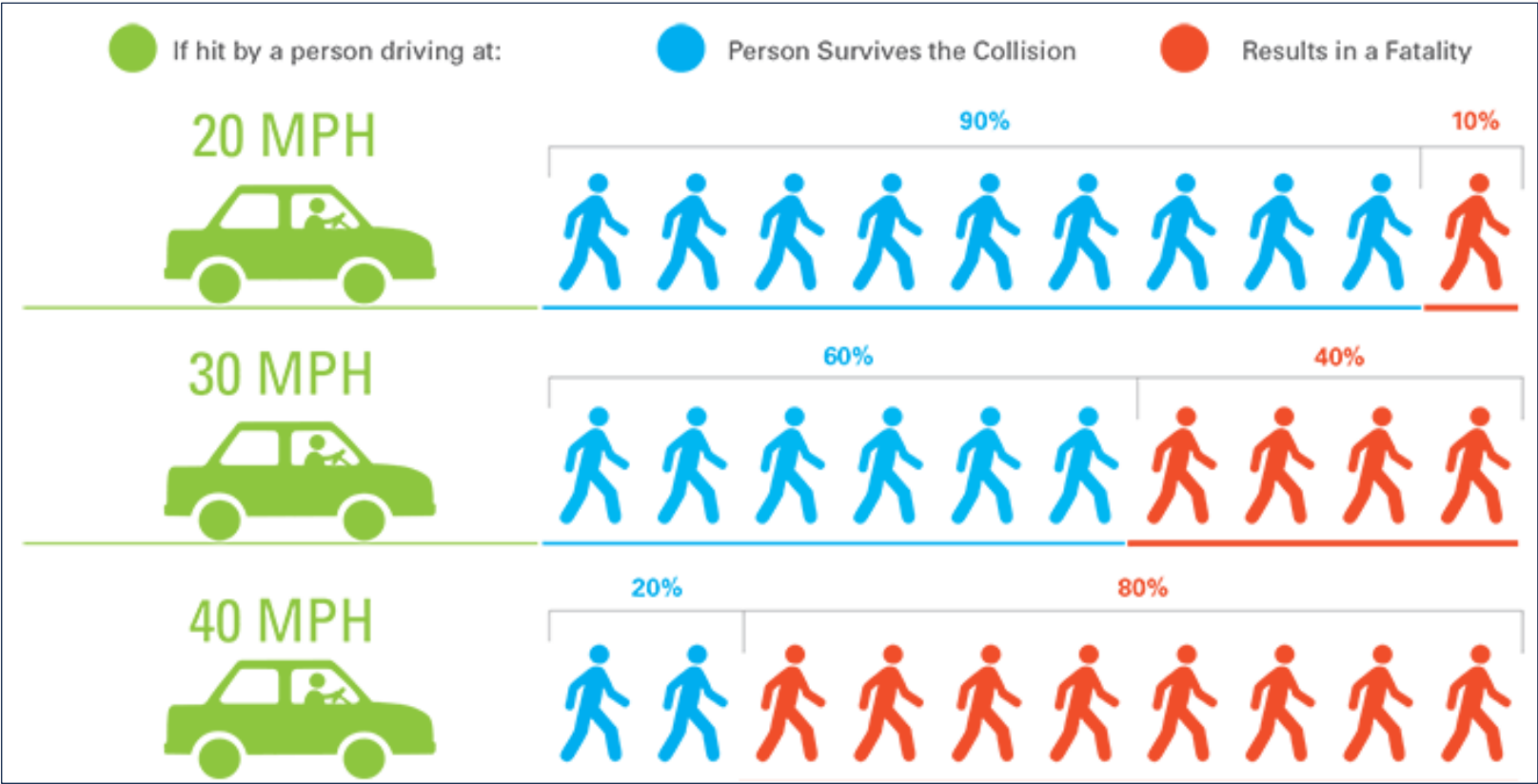


*Vehicles by Travel Speed*



# Creating a Safer Wade Park

Slowing vehicle speeds is especially important for residential streets like Wade Park Avenue



# Project Scope

---

## Wade Park Avenue Resurfacing:

- » Resurface Roadway from E. 66<sup>th</sup> St to E. 118<sup>th</sup> St
- » Upgrade non-compliant curb ramps and curb extensions as needed
- » Address speeding by narrowing the street with bike lanes along the corridor
- » Remove signals and convert to unsignalized intersections with two-way stop controls (stop signs) at six intersections along the street
- » Remove traffic signals and install mini roundabouts and median islands at five intersections along the street
- » Pavement removal on Ansel Rd from Crawford Rd to Wade Park Ave to create green space



# Project Signal Upgrades



**To Remain** – Wade Park Ave. at E. 79<sup>th</sup> St, East Boulevard, and E. 105<sup>th</sup> St.

**Signal to be Removed and Replaced with Two-Way Stop Control (Stop Signs)** – Wade Park Ave. at E. 66<sup>th</sup> St, Russell Rd/E. 70<sup>th</sup> St, Addison Rd, E. 86<sup>th</sup> St, E. 91<sup>st</sup> St, and Crawford Rd.

**Signals to be Removed and Replaced with Mini Roundabouts** – Wade Park Ave. at Giddings Rd/E. 71<sup>st</sup> St, E. 82<sup>nd</sup> St, Ansel Rd/MLK Dr Ramps, E. 108<sup>th</sup> St, and E. 115<sup>th</sup> St.



**In 2022 and 2023 we  
reconstructed Franklin  
Boulevard.**

**We aimed to create a street that was safer for  
everyone and more comfortable for people  
walking and biking.**



# Franklin Boulevard & W. 38<sup>th</sup> Street



**2024 ACEC Ohio Engineering Excellence Award & 2026 ODOT/ACEC Partnering Award**

**CITY of CLEVELAND**

MAYOR JUSTIN M. BIBB

MAYOR'S OFFICE OF CAPITAL PROJECTS



# Franklin Boulevard & W. 45<sup>th</sup> Street



**2024 ACEC Ohio Engineering Excellence Award & 2026 ODOT/ACEC Partnering Award**



**Speeding is down along the entire street.**

**The percentage of drivers traveling over 25 mph has dropped from 63% to 17%**



# **There are fewer crashes corridor-wide.**

**Total crashes have decreased by 76% and injury-related crashes have decreased by 69%**

**Fewer people are using Franklin as a cut-through.**

**Vehicle volumes have declined by around 30%**

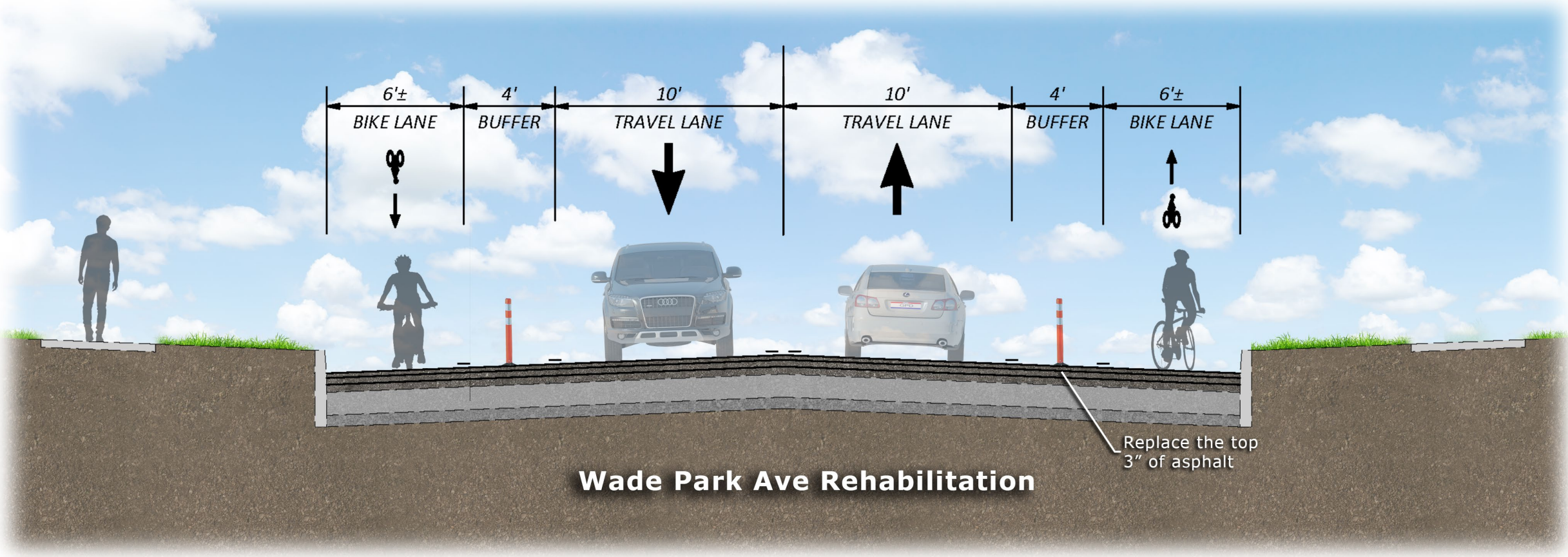


# Wade Park: Mini-Roundabouts

- » Over 75% of crashes are occurring at intersections. Roundabouts were selected to be constructed at five intersections along the corridor in response
- » Roundabouts have reduced total crashes by 60-80% in other locations in Cleveland
- » Mini roundabouts are designed to allow large trucks and buses to drive across the middle



# Wade Park: Project Typical



# Wade Park: Separated Bike Lanes

---

Separated bike lanes will reduce speeds by visually narrowing the street and preventing unexpected passing in empty parking lanes

Separated bike lanes are proven to **improve safety for everyone**, not just bike riders, by:

- Reducing maximum vehicle speeds by 28%
- Reducing crashes for all modes by 30-50%
- Reducing crossing distances for pedestrians
- Increasing the space between moving vehicles and people using the sidewalk

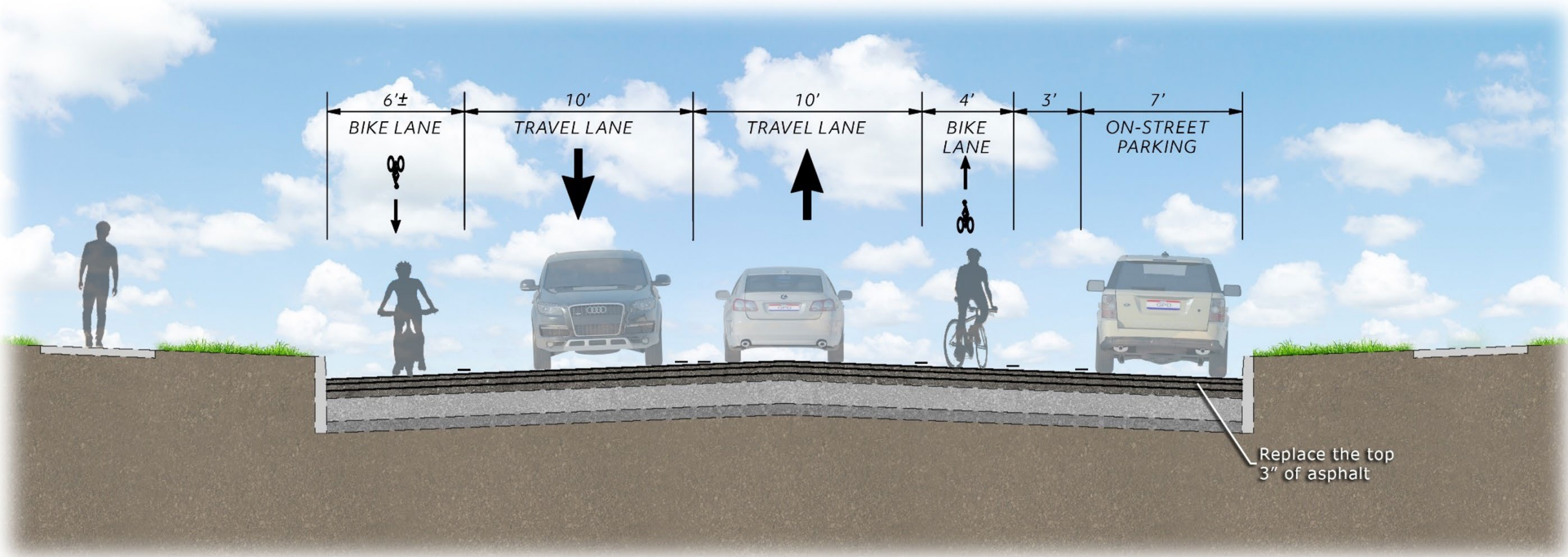
This project will contribute to a **broader bikeway network** that will connect upcoming facilities on E. 66<sup>th</sup>, E. 55<sup>th</sup>, and the Superior Midway



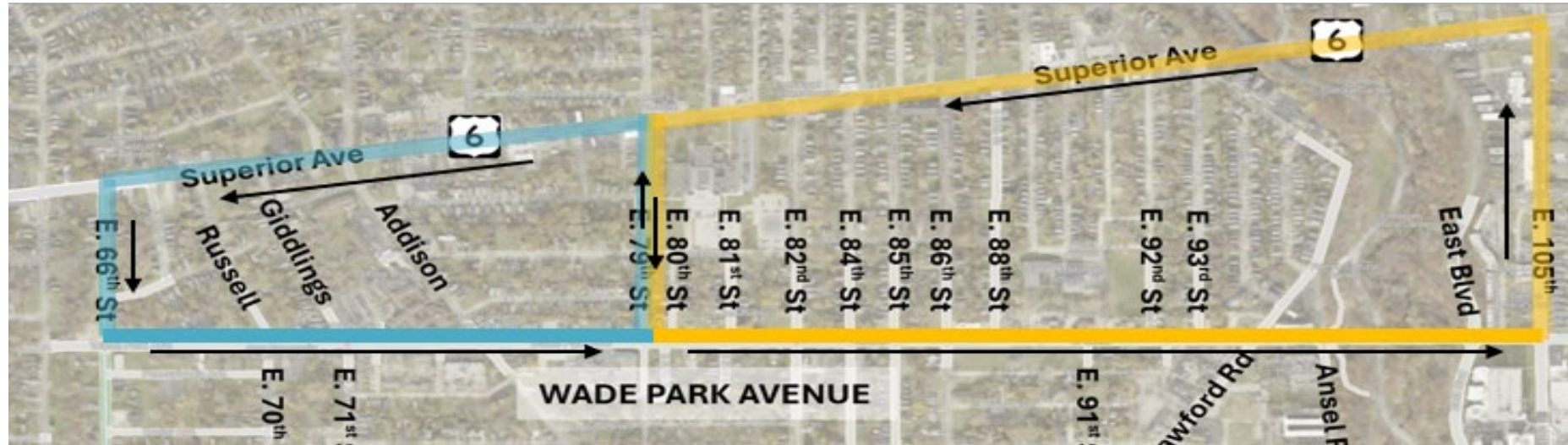
A separated bike lane in Cleveland on Lorain Avenue



# Alternative: E. 105<sup>th</sup> St. to E. 118<sup>th</sup> St.



# Planned Construction Sequence



## Maintenance of Traffic Stages

### **Section 1** – E. 66<sup>th</sup> Street to E. 79<sup>th</sup> Street

- Eastbound traffic will be maintained, westbound traffic will be detoured to US 6 (Superior Ave)
- **A:** Construct north side of Wade Park Ave
- **B:** Construct south side of Wade Park Ave

### **Section 2** – E. 79<sup>th</sup> St to E. 105<sup>th</sup> St

- Eastbound traffic will be maintained, westbound traffic will be detoured to US 6 (Superior Ave)
- **A:** Construct north side of Wade Park Ave
- **B:** Construct south side of Wade Park Ave



# Planned Construction Sequence



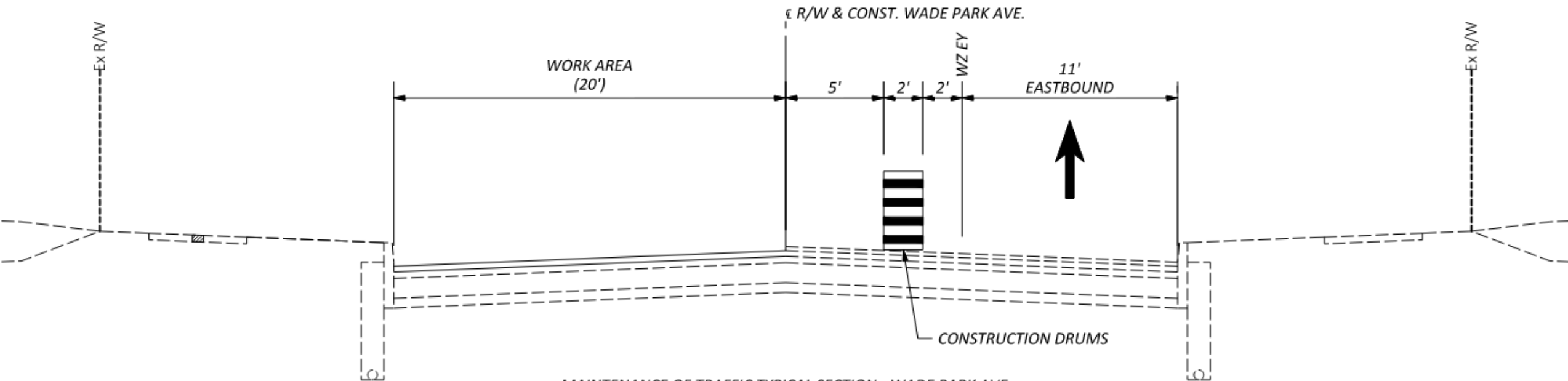
## Maintenance of Traffic Stages

### Section 3 – E. 105<sup>th</sup> St to E. 118<sup>th</sup> St

- Eastbound traffic will be maintained, westbound traffic will be detoured to US 20 (Euclid Ave)
- **A:** Construct north side of Wade Park Ave
- **B:** Construct south side of Wade Park Ave



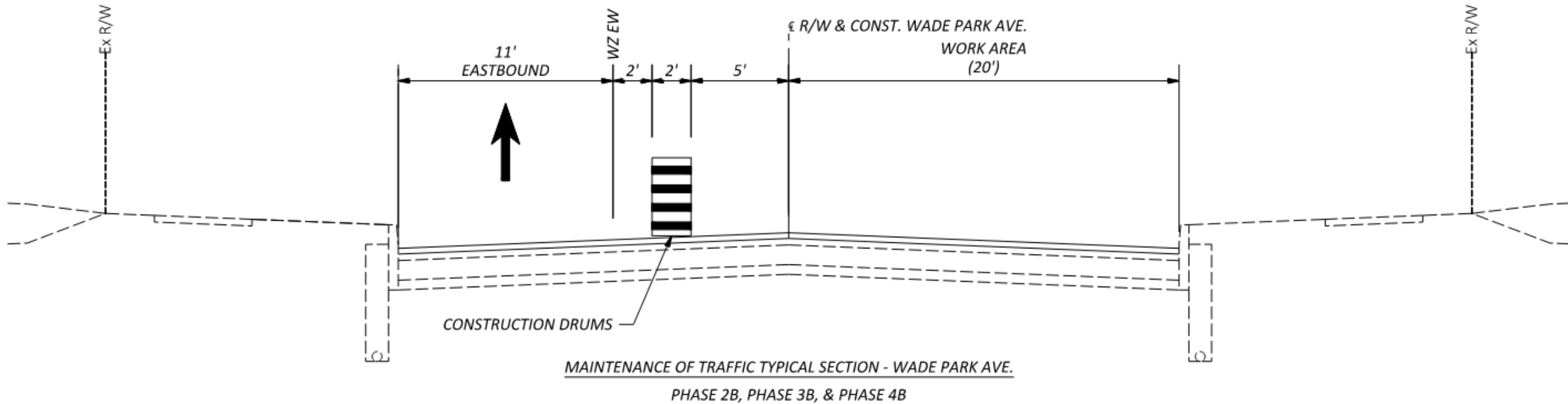
# Maintenance of Traffic Typical Section



MAINTENANCE OF TRAFFIC TYPICAL SECTION - WADE PARK AVE.  
PHASE 2A, PHASE 3A, & PHASE 4A



# Maintenance of Traffic Typical Section





CITY OF CLEVELAND  
Mayor Justin M. Bibb

# Questions & Comments

---



Please see the Project Webpage for additional information

Scan the QR code or visit  
[www.ClevelandOhio.gov/Wade-Park](http://www.ClevelandOhio.gov/Wade-Park)

