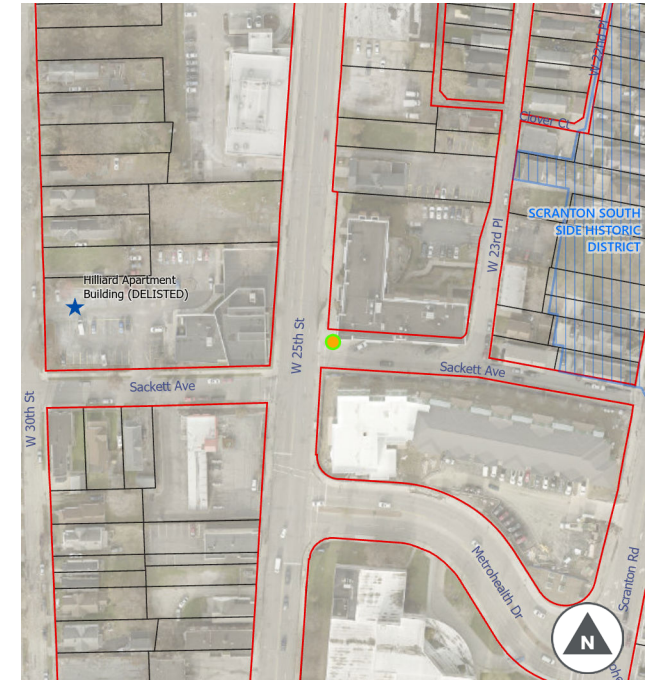


Station BC2

Cleveland, OH | 2495 Sackett



- Public ROW Line
- Parcel Line
- This Station
- Other Stations
- NR/Local Historic Site
- NR Historic District

STATION DETAILS:

Address: 2495 Sackett
Municipality: Cleveland
Location Details: NE Corner
Public ROW: Y
Bus Stop: N
On-Street Parking: N

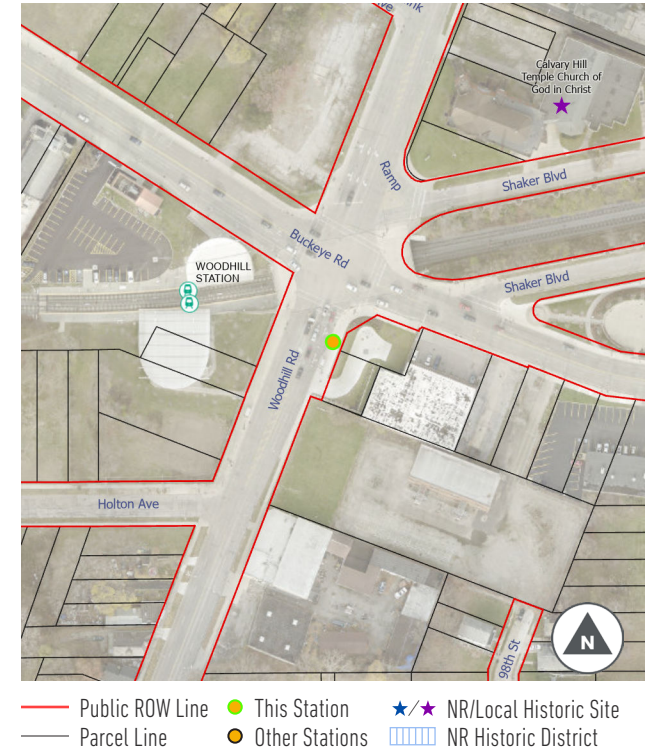
Adjacent Historic Site: N
Placement Notes: 4' from Sackett curb to box, 6' from Sackett curb ramp

STATION TYPOLOGY:

Typology: 2A
Vehicle Capacity: 10
Number of Racks: 5
Sign Type: CLE
Sign Post: New 12' post
Post Height (if needed): 12'

Station BUC004

Cleveland, OH | 2807 Woodhill Rd.



STATION DETAILS:

Address: 2807 Woodhill Rd.

Municipality: Cleveland

Location Details: SE corner

Public ROW: Y

Bus Stop: Y

On-Street Parking: N

Adjacent Historic Site: N

Placement Notes: 3' from Woodhill curb to box, 5' from utility pole

STATION TYPOLOGY:

Typology: 2A

Vehicle Capacity: 10

Number of Racks: 5

Sign Type: CLE

Sign Post: Existing Pole (if permitted)

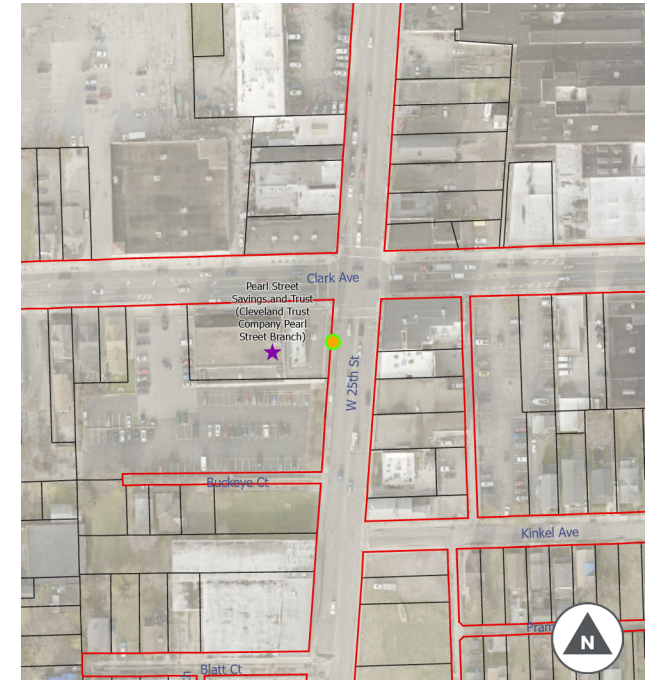
Post Height (if needed): 12'

Station CF3

Cleveland, OH | 3101 W 25th St.



CF3: 3101 W 25th St.



- Public ROW Line
- Parcel Line
- This Station
- Other Stations
- NR/Local Historic Site
- NR Historic District

STATION DETAILS:

Address: 3101 W 25th St.

Municipality: Cleveland

Location Details: SW corner

Public ROW: Y

Bus Stop: Y

On-Street Parking: N

Adjacent Historic Site: N

Placement Notes: 2' from curb to box, 5' from bus stop sign

STATION TYPOLOGY:

Typology: 3A

Vehicle Capacity: 6

Number of Racks: 3

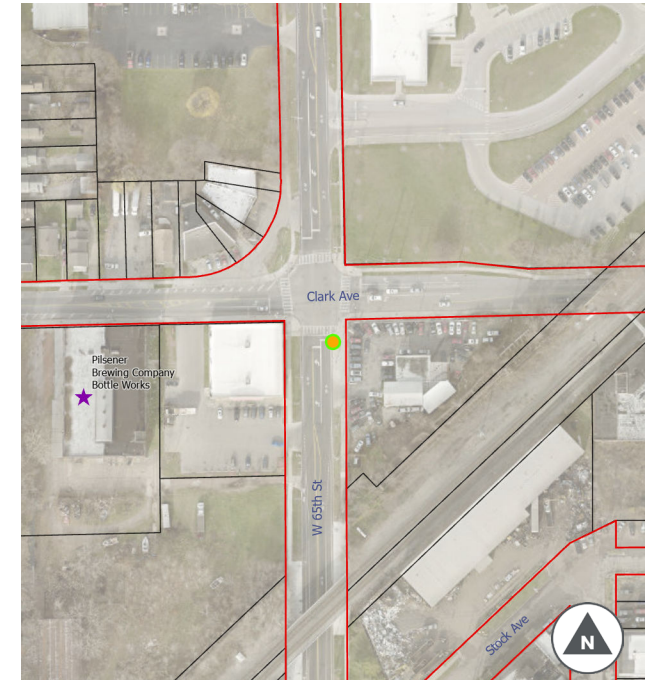
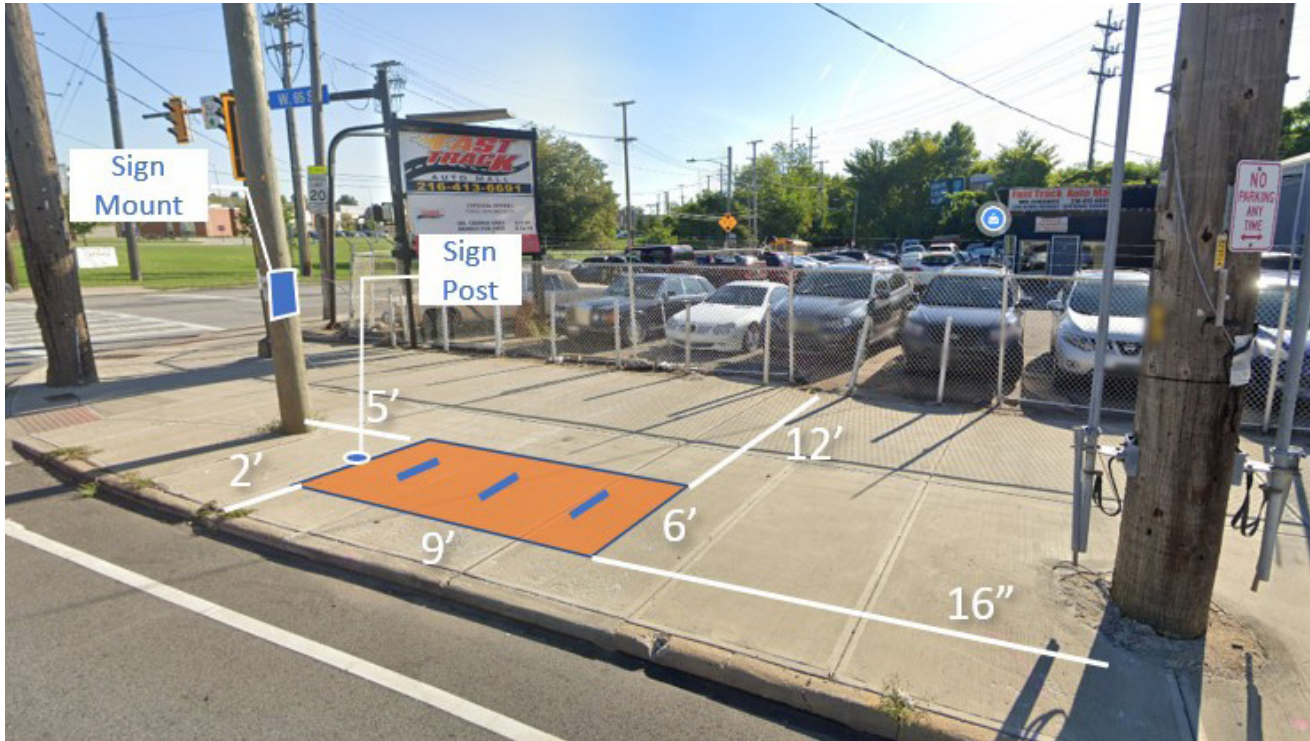
Sign Type: CLE

Sign Post: Existing Post (if permitted)

Post Height (if needed): 12'

Station CF6

Cleveland, OH | 2301 W. 65th St.



- Public ROW Line
- Parcel Line
- This Station
- Other Stations
- NR/Local Historic Site
- NR Historic District

STATION DETAILS:

Address: 2301 W. 65th St.

Municipality: Cleveland

Location Details: SE Corner

Public ROW: Y

Bus Stop: N

On-Street Parking: N

Adjacent Historic Site: N

Placement Notes: 2' from curb to box, 5' from utility pole to the north

STATION TYPOLOGY:

Typology: 3A

Vehicle Capacity: 6

Number of Racks: 3

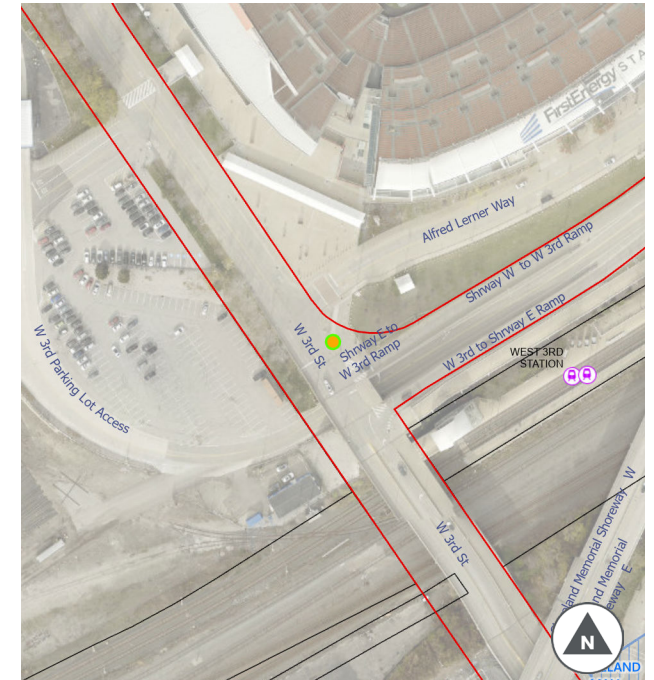
Sign Type: CLE

Sign Post: Existing Pole (if permitted)

Post Height (if needed): 12'

Station CLE012

Cleveland, OH | 607 W 3rd St



STATION DETAILS:

Address: 607 W 3rd St

Municipality: Cleveland

Location Details: SE corner

Public ROW: Y

Bus Stop: N

On-Street Parking: N

Adjacent Historic Site: N

Placement Notes: 2' from grass curb to box, 18" from existing sign

STATION TYPOLOGY:

Typology: 2B

Vehicle Capacity: 8

Number of Racks: 4

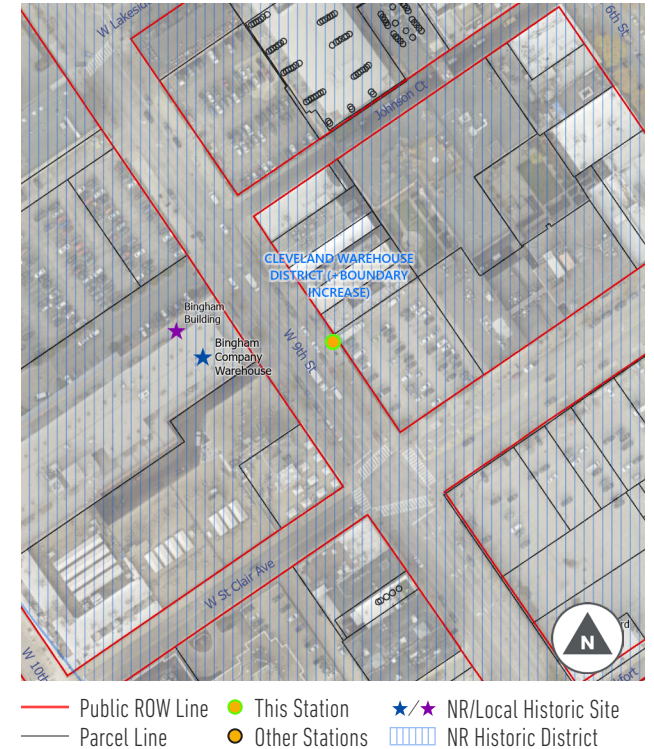
Sign Type: CLE

Sign Post: New 9' post in grass

Post Height (if needed): 9'

Station CLE022

Cleveland, OH | 1299 W 9th St



STATION DETAILS:

Address: 1299 W 9th St
Municipality: Cleveland
Location Details: NE
Public ROW: Y
Bus Stop: N
On-Street Parking: Y

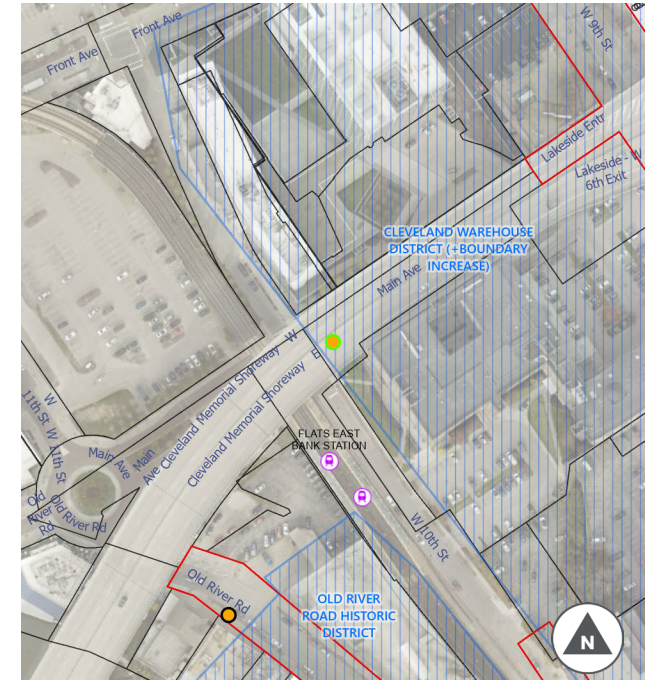
Adjacent Historic Site: Y (Cleveland Warehouse District)
Placement Notes: Box flush with planter curb, 3' from patio railing

STATION TYPOLOGY:

Typology: 2B
Vehicle Capacity: 8
Number of Racks: 4
Sign Type: CLE
Sign Post: New 9' post in landscape bed
Post Height (if needed): 9'

Station CLE029

Cleveland, OH | 1215 W 10th St



STATION DETAILS:

Address: 1215 W 10th St

Municipality: Cleveland

Location Details: SE corner

Public ROW: Y

Bus Stop: N

On-Street Parking: N

Adjacent Historic Site: Y (Cleveland Warehouse District)

Placement Notes: Box flush with grass, 8' from steps

STATION TYPOLOGY:

Typology: 2B

Vehicle Capacity: 8

Number of Racks: 4

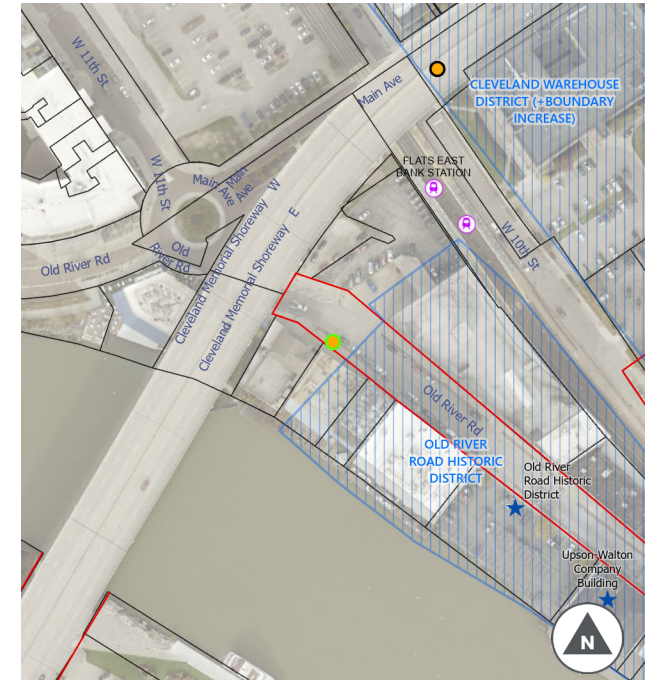
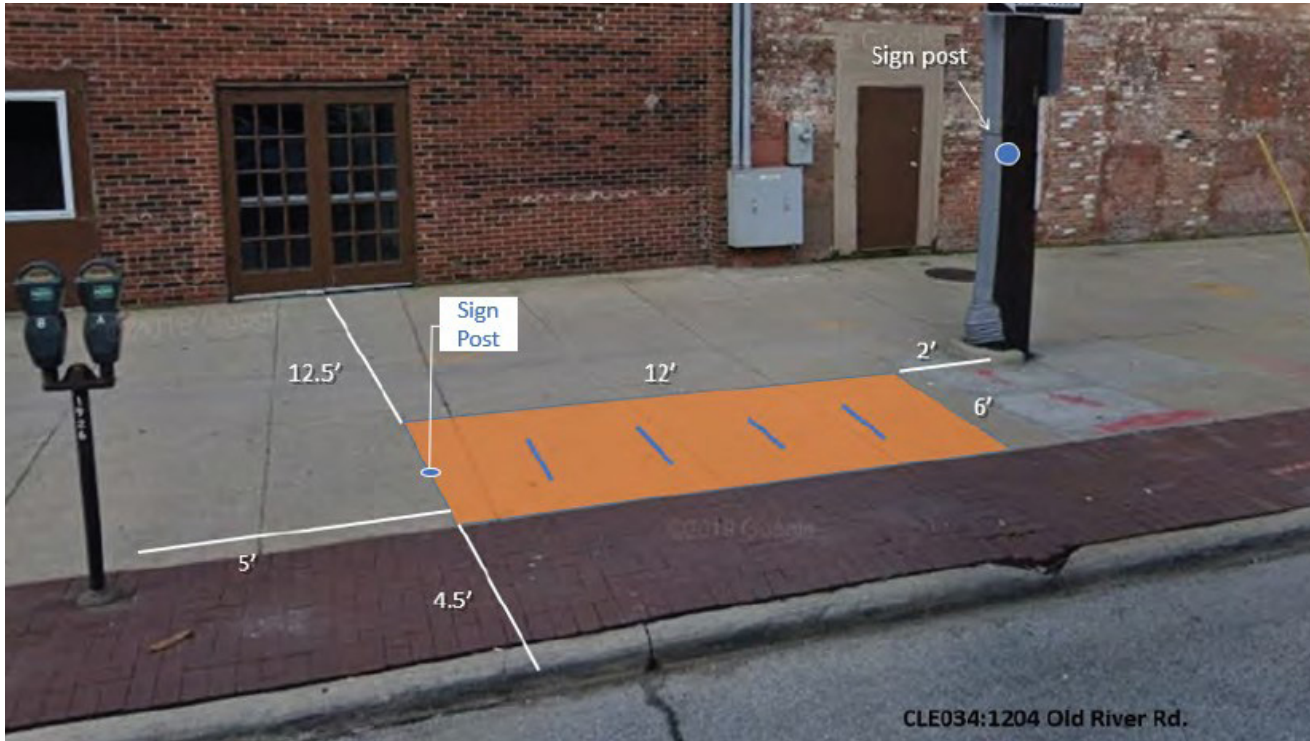
Sign Type: CLE

Sign Post: New 12' post

Post Height (if needed): 12'

Station CLE034

Cleveland, OH | 1204 Old River Rd.



STATION DETAILS:

Address: 1204 Old River Rd.
Municipality: Cleveland
Location Details: SW corner
Public ROW: Y
Bus Stop: N
On-Street Parking: Y

Adjacent Historic Site: Y (Old River Road Historic District)
Placement Notes: 4.5' from curb and 2' from utility pole to box

STATION TYPOLOGY:

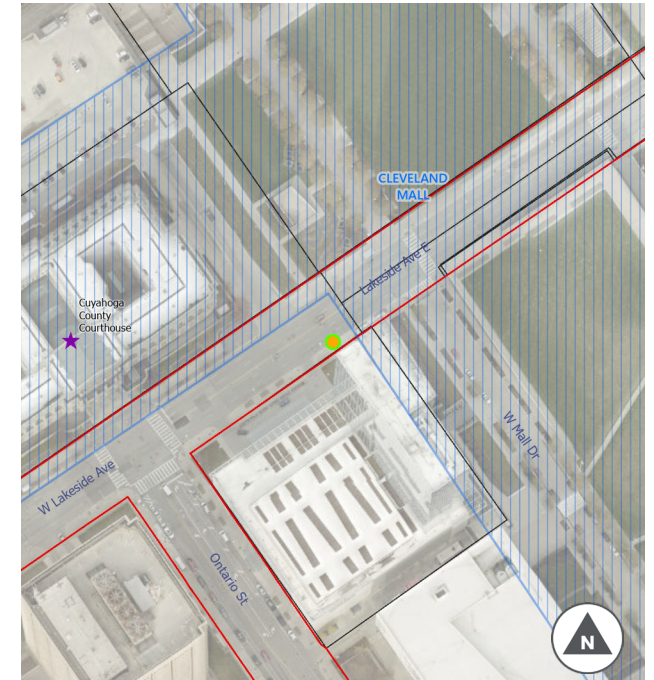
Typology: 2B
Vehicle Capacity: 8
Number of Racks: 4
Sign Type: CLE
Sign Post: Existing Pole (if permitted)
Post Height (if needed): 12'

Station CLE040

Cleveland, OH | 125 Lakeside Ave E.



CLE040:125 Lakeside Ave E.



— Public ROW Line ● This Station ★/★ NR/Local Historic Site
— Parcel Line ● Other Stations ■■■ NR Historic District

STATION DETAILS:

Address: 125 Lakeside Ave E.

Municipality: Cleveland

Location Details: SE corner

Public ROW: Y

Bus Stop: N

On-Street Parking: N

Adjacent Historic Site: Y (Cleveland Mall)

Placement Notes: 2' from curb to box, 5' from fire hydrant

STATION TYPOLOGY:

Typology: 2A

Vehicle Capacity: 10

Number of Racks: 5

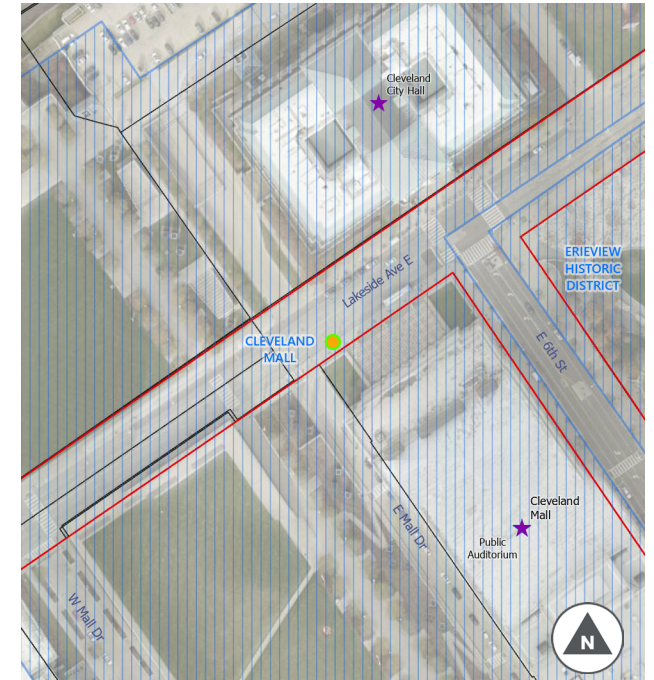
Sign Type: CLE

Sign Post: New 12' post

Post Height (if needed): 12'

Station CLE049

Cleveland, OH | 337 Lakeside Ave



- Public ROW Line
- Parcel Line
- This Station
- Other Stations
- NR/Local Historic Site
- NR Historic District

STATION DETAILS:

Address: 337 Lakeside Ave

Municipality: Cleveland

Location Details: NE

Public ROW: Y

Bus Stop: N

On-Street Parking: N

Adjacent Historic Site: Y (Cleveland Mall)

Placement Notes: 2' from curb to box, 3' from utility pole

STATION TYPOLOGY:

Typology: 2B

Vehicle Capacity: 8

Number of Racks: 4

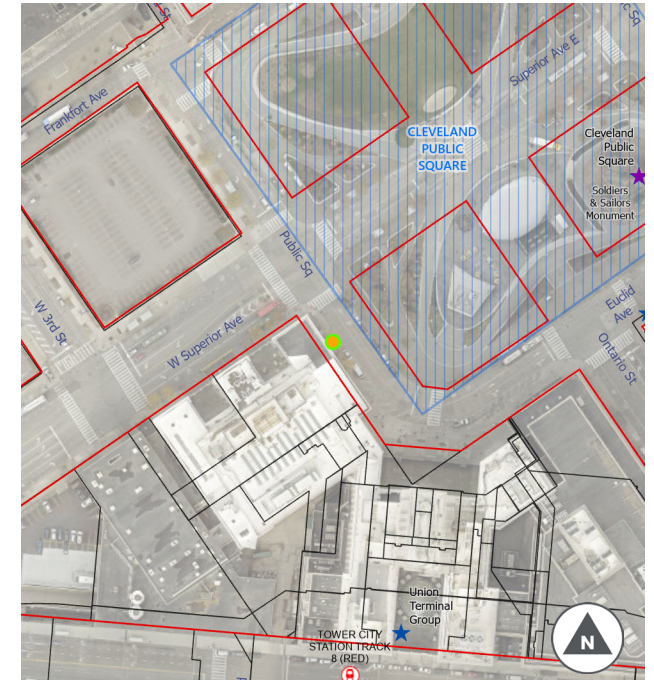
Sign Type: CLE

Sign Post: Existing Pole (if permitted)

Post Height (if needed): 12'

Station CLE060

Cleveland, OH | W Roadway & W Superior



STATION DETAILS:

Address: W Roadway & W Superior

Municipality: Cleveland

Location Details: NW corner

Public ROW: Y

Bus Stop: Y

On-Street Parking: N

Adjacent Historic Site: Y (Cleveland Public Square)

Placement Notes: 3' from curb to box, centered between tree pits

STATION TYPOLOGY:

Typology: 3A

Vehicle Capacity: 6

Number of Racks: 3

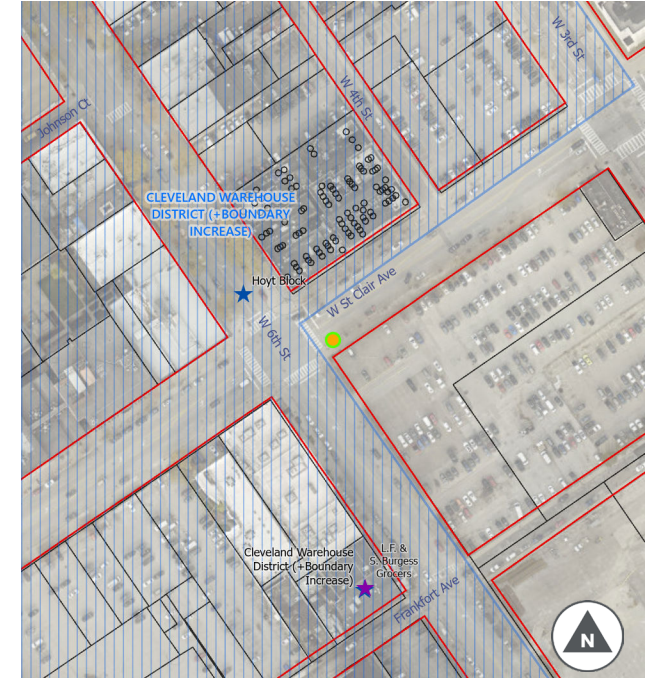
Sign Type: CLE

Sign Post: Existing Post (if permitted)

Post Height (if needed): 12'

Station CLE076

Cleveland, OH | 499 W St Clair Ave



- Public ROW Line
- Parcel Line
- This Station
- Other Stations
- NR/Local Historic Site
- NR Historic District

STATION DETAILS:

Address: 499 W St Clair Ave

Municipality: Cleveland

Location Details: SE corner

Public ROW: Y

Bus Stop: N

On-Street Parking: N

Adjacent Historic Site: Y (Cleveland Warehouse District)

Placement Notes: 2' from curb to box, centered between trash bin and tree pit

STATION TYPOLOGY:

Typology: 3A

Vehicle Capacity: 6

Number of Racks: 3

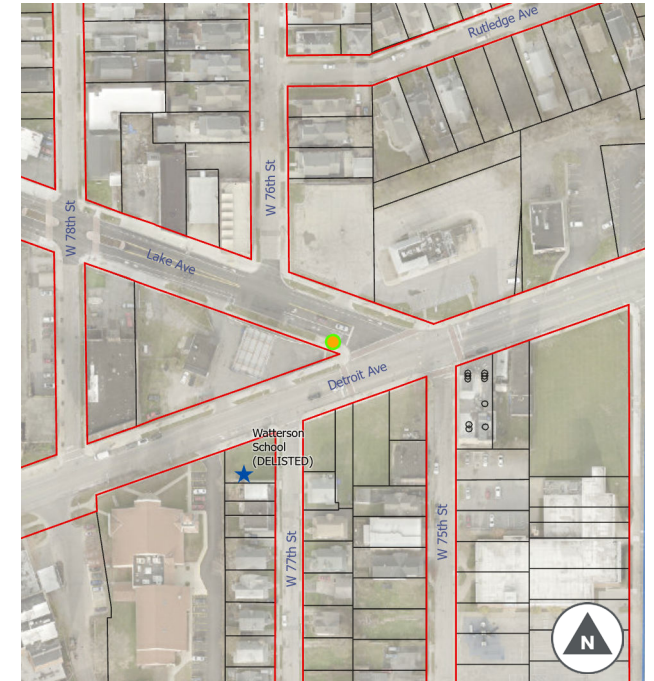
Sign Type: CLE

Sign Post: Existing Pole (if permitted)

Post Height (if needed): 12'

Station CLE083

Cleveland, OH | 7587 Lake Ave



- Public ROW Line
- Parcel Line
- This Station
- Other Stations
- NR/Local Historic Site
- NR Historic District

STATION DETAILS:

Address: 7587 Lake Ave
Municipality: Cleveland
Location Details: SW corner
Public ROW: Y
Bus Stop: N
On-Street Parking: N

Adjacent Historic Site: Y (Gordon Square)
Placement Notes: 3' from curb to box, centered between utility pole and pavers

STATION TYPOLOGY:

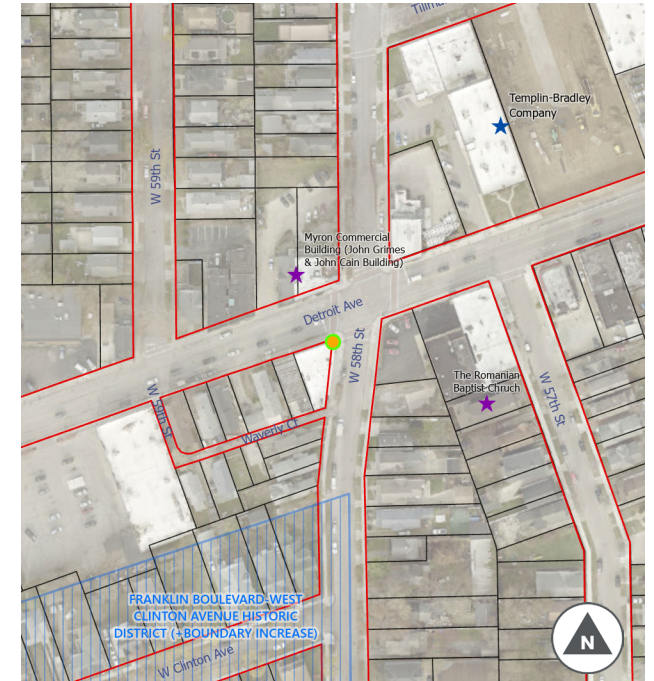
Typology: 3A
Vehicle Capacity: 6
Number of Racks: 3
Sign Type: CLE
Sign Post: Existing Pole (if permitted)
Post Height (if needed): 12'

Station CLE088

Cleveland, OH | 1406 W 58th St



CLE088 – 1406 W. 58th St.



- Public ROW Line
- Parcel Line
- This Station
- Other Stations
- NR/Local Historic Site
- NR Historic District

STATION DETAILS:

Address: 1406 W 58th St

Municipality: Cleveland

Location Details: SW

Public ROW: Y

Bus Stop: N

On-Street Parking: Y

Adjacent Historic Site: Y (Gordon Square and Franklin - West Clinton)

Placement Notes: 18" from curb to box; 3' from storm drain to box

STATION TYPOLOGY:

Typology: 2B

Vehicle Capacity: 8

Number of Racks: 4

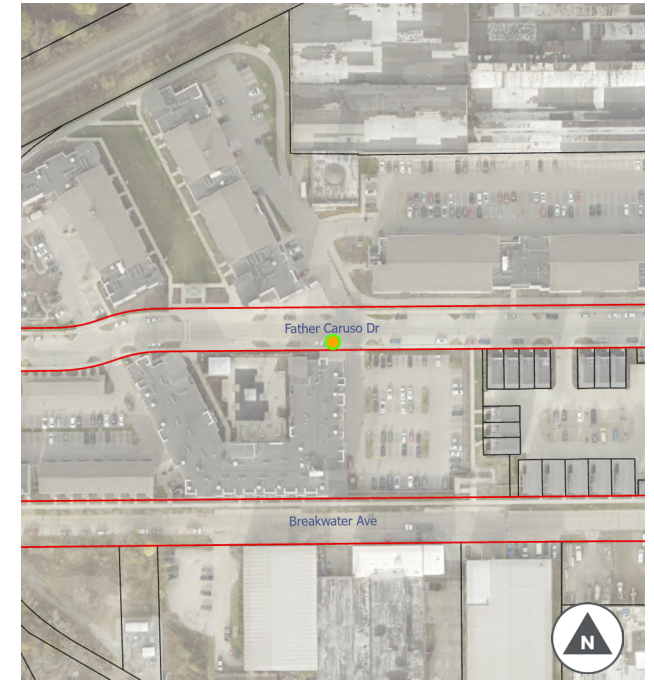
Sign Type: CLE

Sign Post: New 12' Post

Post Height (if needed): 12'

Station CLE090

Cleveland, OH | 5995 Father Caruso Dr



- Public ROW Line
- Parcel Line
- This Station
- Other Stations
- NR/Local Historic Site
- NR Historic District

STATION DETAILS:

Address: 5995 Father Caruso Dr

Municipality: Cleveland

Location Details: SW corner

Public ROW: Y

Bus Stop: N

On-Street Parking: N

Adjacent Historic Site: N

Placement Notes: 2' from curb to box; first rack 18" from grass

STATION TYPOLOGY:

Typology: 2B

Vehicle Capacity: 8

Number of Racks: 4

Sign Type: CLE

Sign Post: New 9' Post in landscape bed

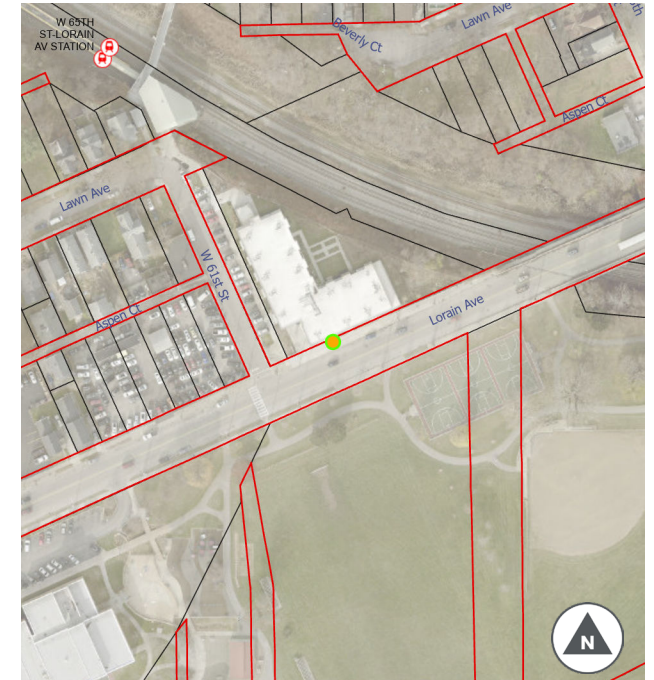
Post Height (if needed): 9'

Station CLE091

Cleveland, OH | 6014 Lorain Ave.



CLE091: 6014 Lorain Ave.



- Public ROW Line
- Parcel Line
- This Station
- Other Stations
- NR/Local Historic Site
- NR Historic District

STATION DETAILS:

Address: 6014 Lorain Ave.

Municipality: Cleveland

Location Details: NE corner

Public ROW: Y

Bus Stop: Y

On-Street Parking: N

Adjacent Historic Site: N

Placement Notes: 2' from curb to box; 2' offset from grass to edge of box

STATION TYPOLOGY:

Typology: 3A

Vehicle Capacity: 6

Number of Racks: 3

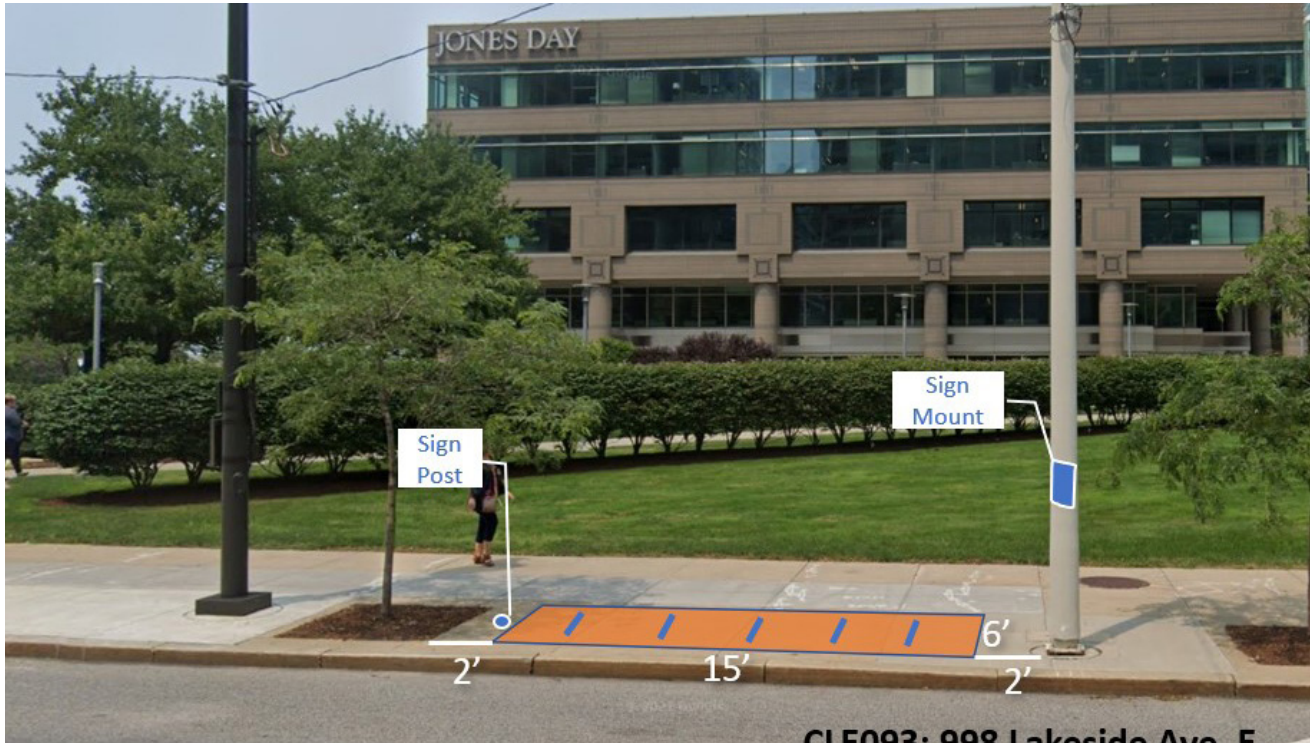
Sign Type: CLE

Sign Post: New 12' Post

Post Height (if needed): 12'

Station CLE093

Cleveland, OH | 998 Lakeside Ave. E.



- Public ROW Line
- Parcel Line
- This Station
- Other Stations
- NR/Local Historic Site
- NR Historic District

STATION DETAILS:

Address: 998 Lakeside Ave. E.

Municipality: Cleveland

Location Details: NE corner

Public ROW: Y

Bus Stop: N

On-Street Parking: N

Adjacent Historic Site: N

Placement Notes: 2' from curb to box, centered between tree pit and lamp post

STATION TYPOLOGY:

Typology: 2A

Vehicle Capacity: 10

Number of Racks: 5

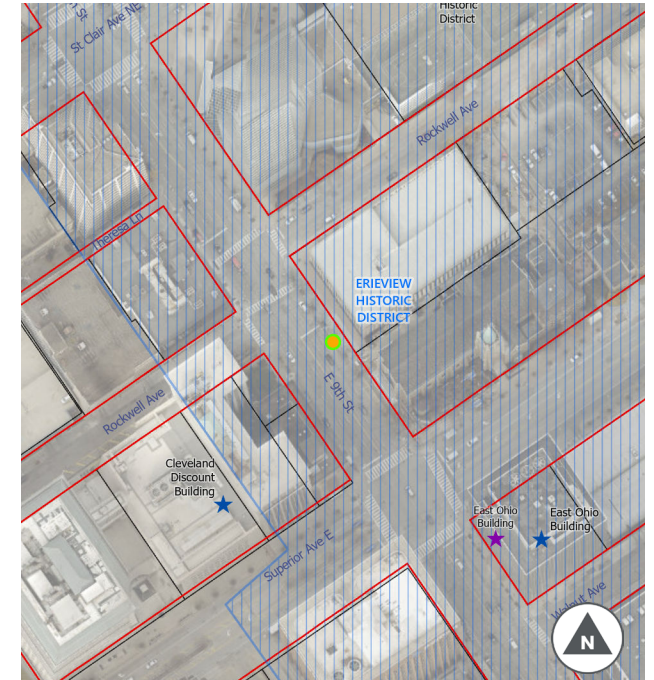
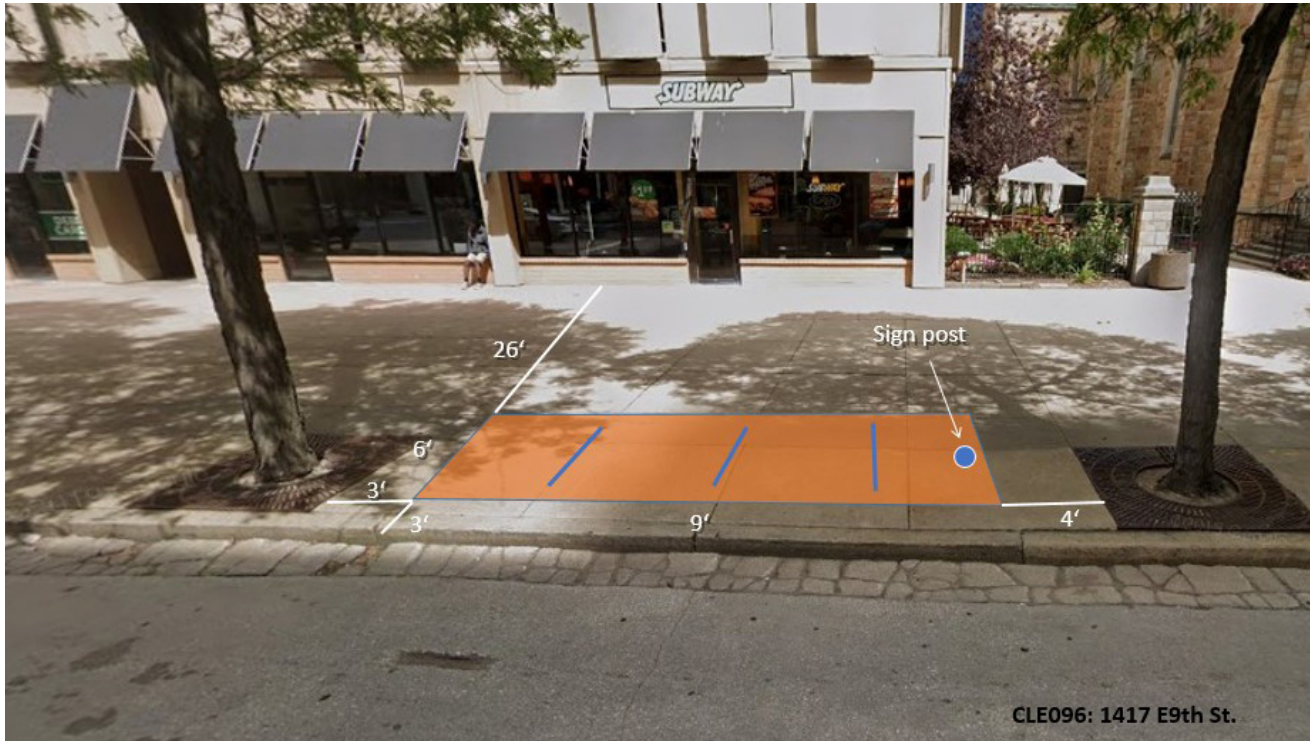
Sign Type: CLE

Sign Post: Existing Pole (if permitted)

Post Height (if needed): 12'

Station CLE096

Cleveland, OH | 1417 E 9th St.



- Public ROW Line
- Parcel Line
- This Station
- Other Stations
- NR/Local Historic Site
- NR Historic District

STATION DETAILS:

Address: 1417 E 9th St.
Municipality: Cleveland
Location Details: In front of Subway
Public ROW: Y
Bus Stop: Y
On-Street Parking: N

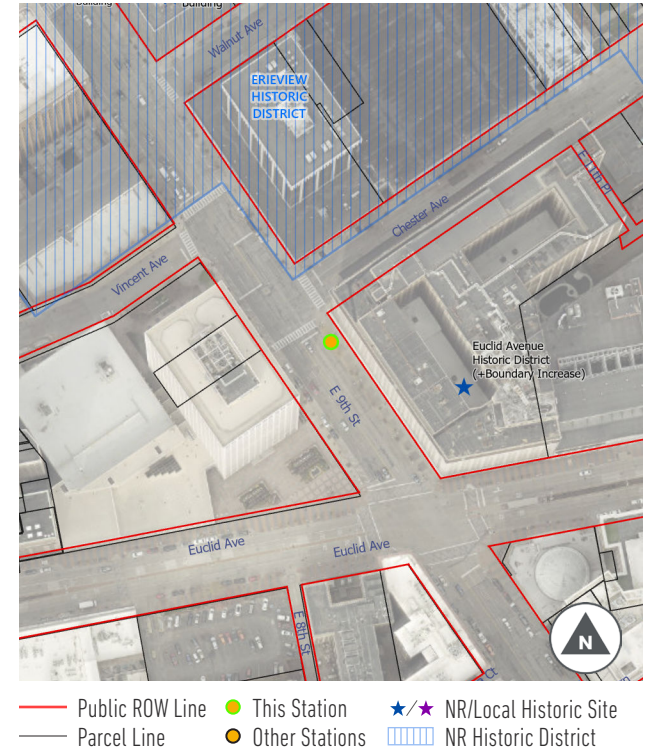
Adjacent Historic Site: Y (Erieview Historic District)
Placement Notes: 3' from curb to box; centered between trees

STATION TYPOLOGY:

Typology: 3A
Vehicle Capacity: 6
Number of Racks: 3
Sign Type: CLE
Sign Post: New 12' Post
Post Height (if needed): 12'

Station CLE100

Cleveland, OH | 1900 E 9th St.



STATION DETAILS:

Address: 1900 E 9th St.
Municipality: Cleveland
Location Details: NE corner
Public ROW: Y
Bus Stop: N
On-Street Parking: N

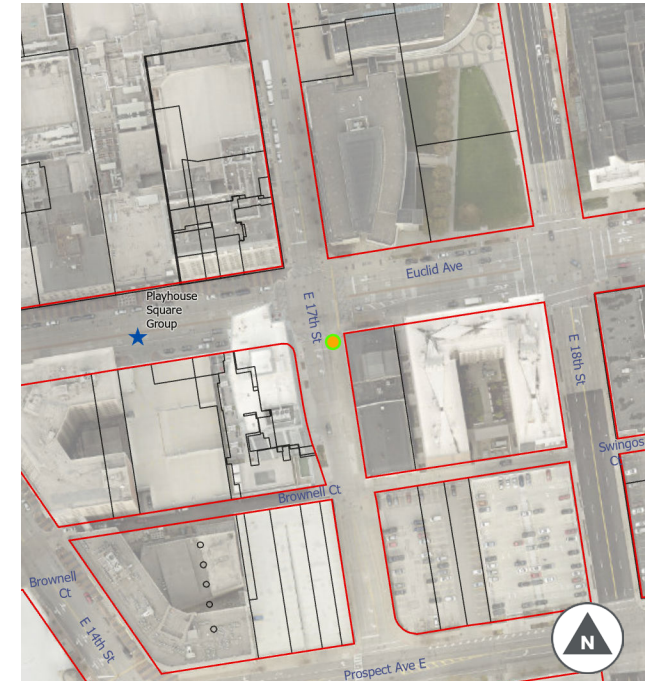
Adjacent Historic Site: N
Placement Notes: 2' from curb to box; centered between tree pits

STATION TYPOLOGY:

Typology: 2B
Vehicle Capacity: 8
Number of Racks: 4
Sign Type: CLE
Sign Post: New 12' Post
Post Height (if needed): 12'

Station CLE104

Cleveland, OH | 1934 E 17th St



STATION DETAILS:

Address: 1934 E 17th St
Municipality: Cleveland
Location Details: SE corner
Public ROW: Y
Bus Stop: N
On-Street Parking: N

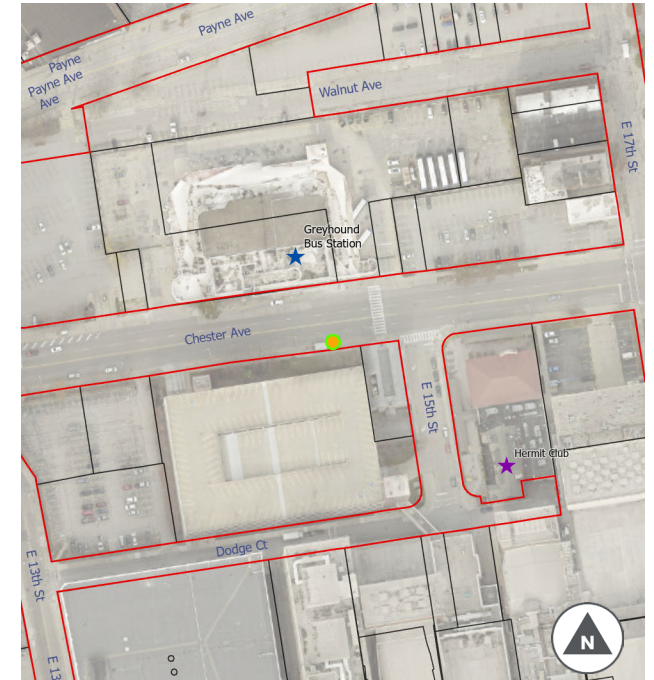
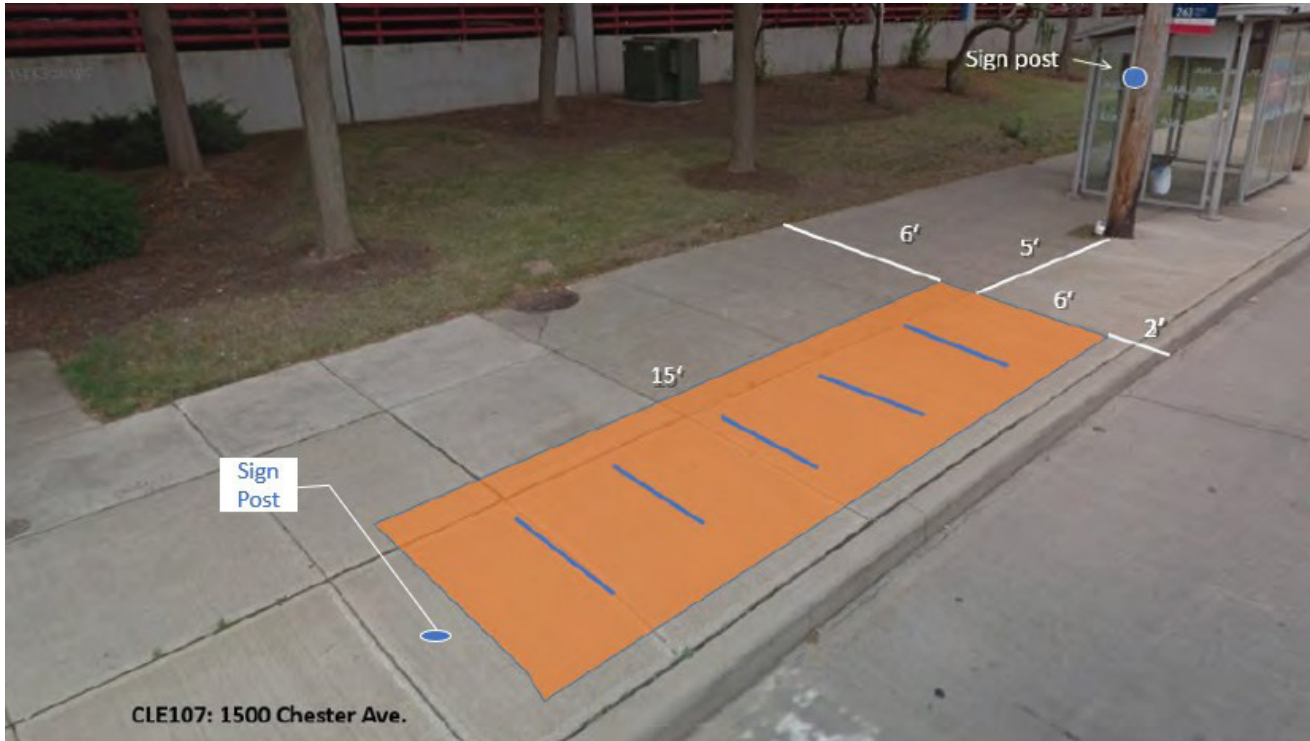
Adjacent Historic Site: N
Placement Notes: 2' from curb to box; 3' from lightpost

STATION TYPOLOGY:

Typology: 3A
Vehicle Capacity: 6
Number of Racks: 3
Sign Type: CLE
Sign Post: Existing Pole (if permitted)
Post Height (if needed): 12'

Station CLE107

Cleveland, OH | 1500 Chester Ave.



- Public ROW Line
- Parcel Line
- This Station
- Other Stations
- NR/Local Historic Site
- NR Historic District

STATION DETAILS:

Address: 1500 Chester Ave.
Municipality: Cleveland
Location Details: SW corner
Public ROW: Y
Bus Stop: Y
On-Street Parking: N

Adjacent Historic Site: N
Placement Notes: 2' from curb to box; 5' from utility pole

STATION TYPOLOGY:

Typology: 2A
Vehicle Capacity: 10
Number of Racks: 5
Sign Type: CLE
Sign Post: Existing Pole (if permitted)
Post Height (if needed): 12'

Station CLE112

Cleveland, OH | 1200 Lakeside Ave. E.



— Public ROW Line ● This Station ★/★ NR/Local Historic Site
— Parcel Line ● Other Stations ▨ NR Historic District

STATION DETAILS:

Address: 1200 Lakeside Ave. E.

Municipality: Cleveland

Location Details: NE corner

Public ROW: Y

Bus Stop: N

On-Street Parking: N

Adjacent Historic Site: Y (Erieview Historic District)

Placement Notes: 3' from curb to box, centered between brick pavers

STATION TYPOLOGY:

Typology: 3A

Vehicle Capacity: 6

Number of Racks: 3

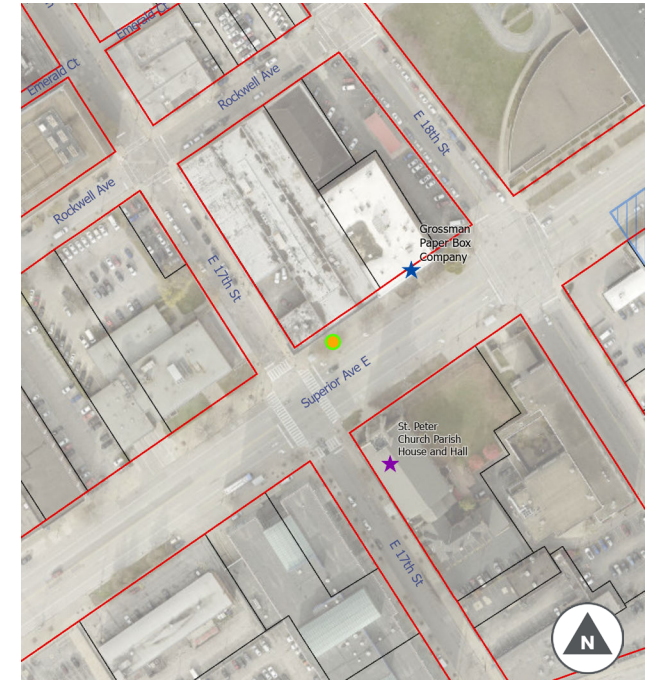
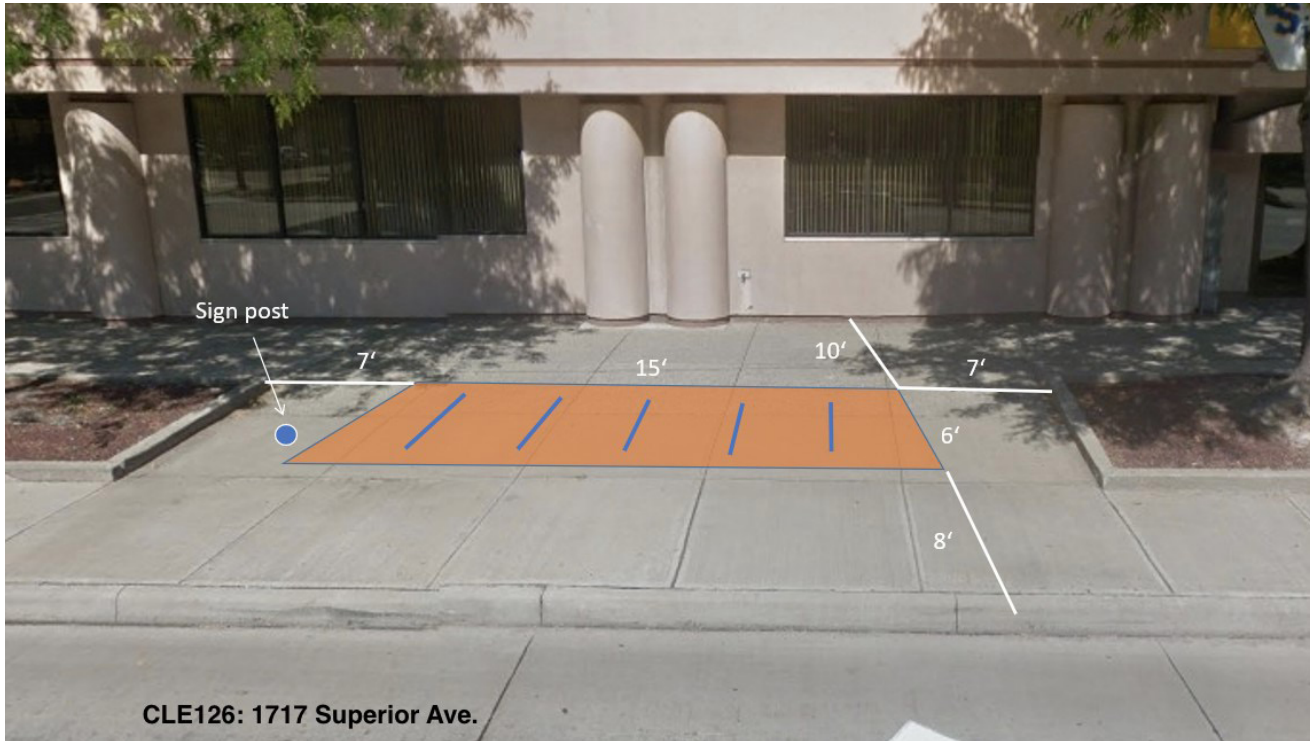
Sign Type: CLE

Sign Post: Existing Pole (if permitted)

Post Height (if needed): 12'

Station CLE126

Cleveland, OH | 1717 Superior Ave.



— Public ROW Line ● This Station ★/★ NR/Local Historic Site
— Parcel Line ● Other Stations ■ NR Historic District

STATION DETAILS:

Address: 1717 Superior Ave.

Municipality: Cleveland

Location Details: NE corner

Public ROW: Y

Bus Stop: Y

On-Street Parking: N

Adjacent Historic Site: N

Placement Notes: 8' from curb to box, centered between tree pits

STATION TYPOLOGY:

Typology: 2A

Vehicle Capacity: 10

Number of Racks: 5

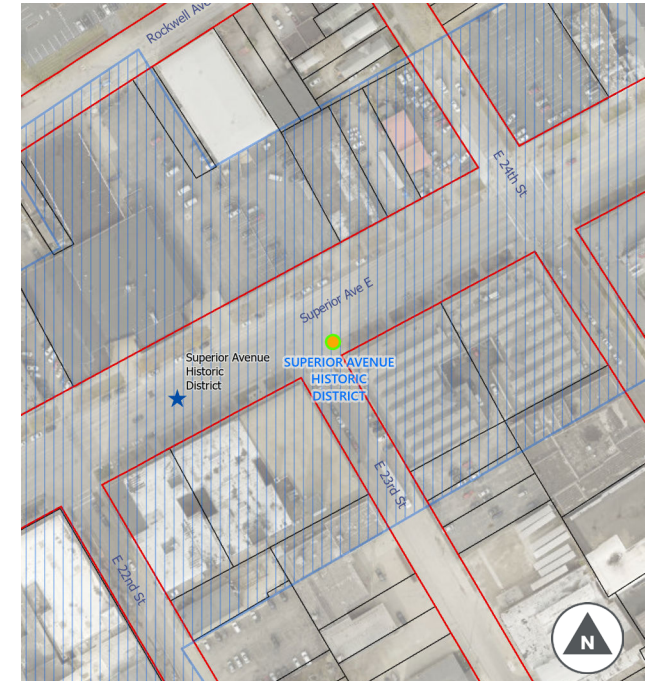
Sign Type: CLE

Sign Post: New 12' Post

Post Height (if needed): 12'

Station CLE130

Cleveland, OH | 1501 E 23rd St.



- Public ROW Line
- Parcel Line
- This Station
- Other Stations
- NR/Local Historic Site
- NR Historic District

STATION DETAILS:

Address: 1501 E 23rd St.

Municipality: Cleveland

Location Details: SE corner

Public ROW: Y

Bus Stop: N

On-Street Parking: N

Adjacent Historic Site: Y (Superior Avenue Historic District)

Placement Notes: 3' from Superior curb to box; 2' from tree lawn

STATION TYPOLOGY:

Typology: 2B

Vehicle Capacity: 8

Number of Racks: 4

Sign Type: CLE

Sign Post: Existing Pole (if permitted)

Post Height (if needed): 9'

Station CLE134

Cleveland, OH | 1999 Randall Rd.



STATION DETAILS:

Address: 1999 Randall Rd.

Municipality: Cleveland

Location Details: NW corner

Public ROW: Y

Bus Stop: N

On-Street Parking: N

Adjacent Historic Site: Y (Lorain Avenue Commercial Historic District)

Placement Notes: 2' from curb to box, centered between pole and sign

STATION TYPOLOGY:

Typology: 2B

Vehicle Capacity: 8

Number of Racks: 4

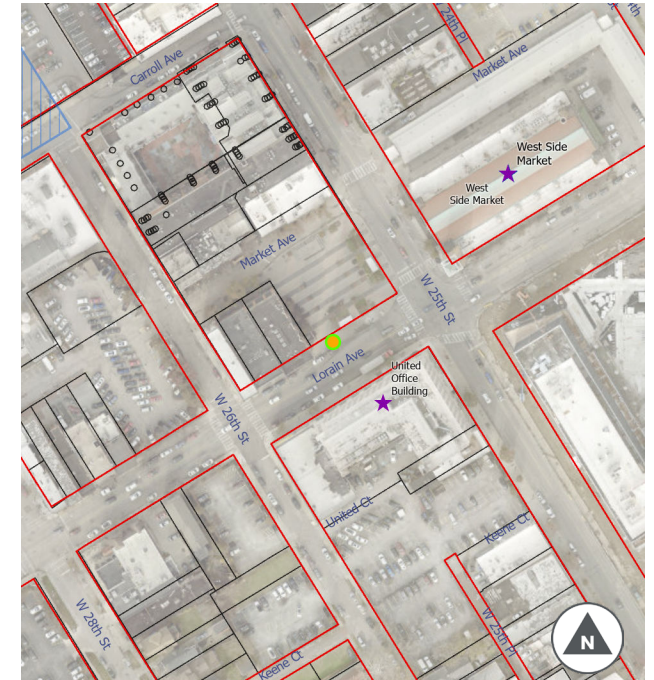
Sign Type: CLE

Sign Post: Existing Pole (if permitted)

Post Height (if needed): 12'

Station CLE139

Cleveland, OH | 2534 Lorain Ave.



STATION DETAILS:

Address: 2534 Lorain Ave.

Municipality: Cleveland

Location Details: NW corner

Public ROW: Y

Bus Stop: Y

On-Street Parking: N

Adjacent Historic Site: Y (Market Square)

Placement Notes: 3' from curb to box and from pole to box

STATION TYPOLOGY:

Typology: 2B

Vehicle Capacity: 8

Number of Racks: 4

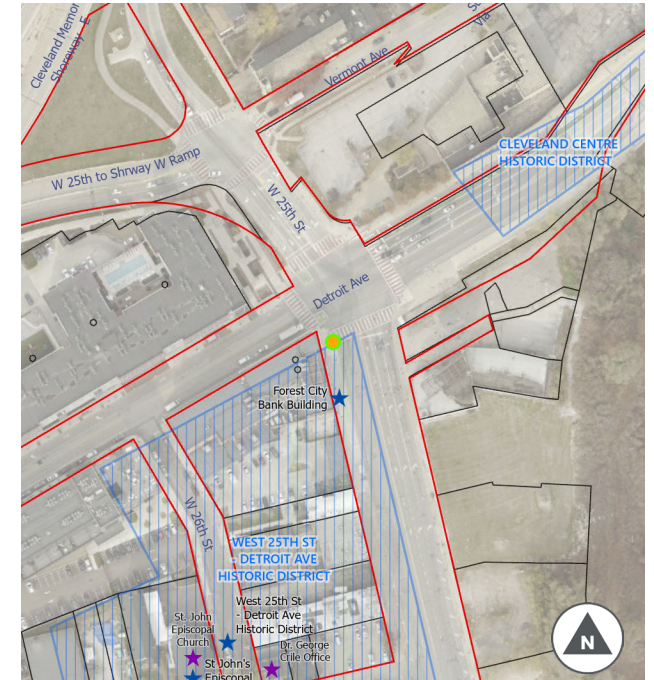
Sign Type: CLE

Sign Post: Existing Pole (if permitted)

Post Height (if needed): 12'

Station CLE150

Cleveland, OH | 1400 W 25th St.



- Public ROW Line
- Parcel Line
- This Station
- Other Stations
- NR/Local Historic Site
- NR Historic District

STATION DETAILS:

Address: 1400 W 25th St.

Municipality: Cleveland

Location Details: SW corner

Public ROW: Y

Bus Stop: N

On-Street Parking: N

Adjacent Historic Site: Y (West 25th St - Detroit Ave Historic District)

Placement Notes: 3' from curb and streetlight to box

STATION TYPOLOGY:

Typology: 3A

Vehicle Capacity: 6

Number of Racks: 3

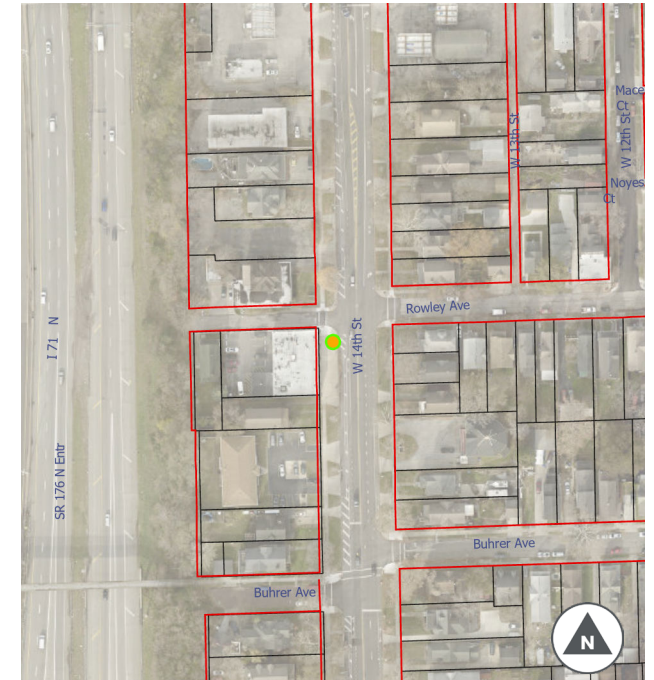
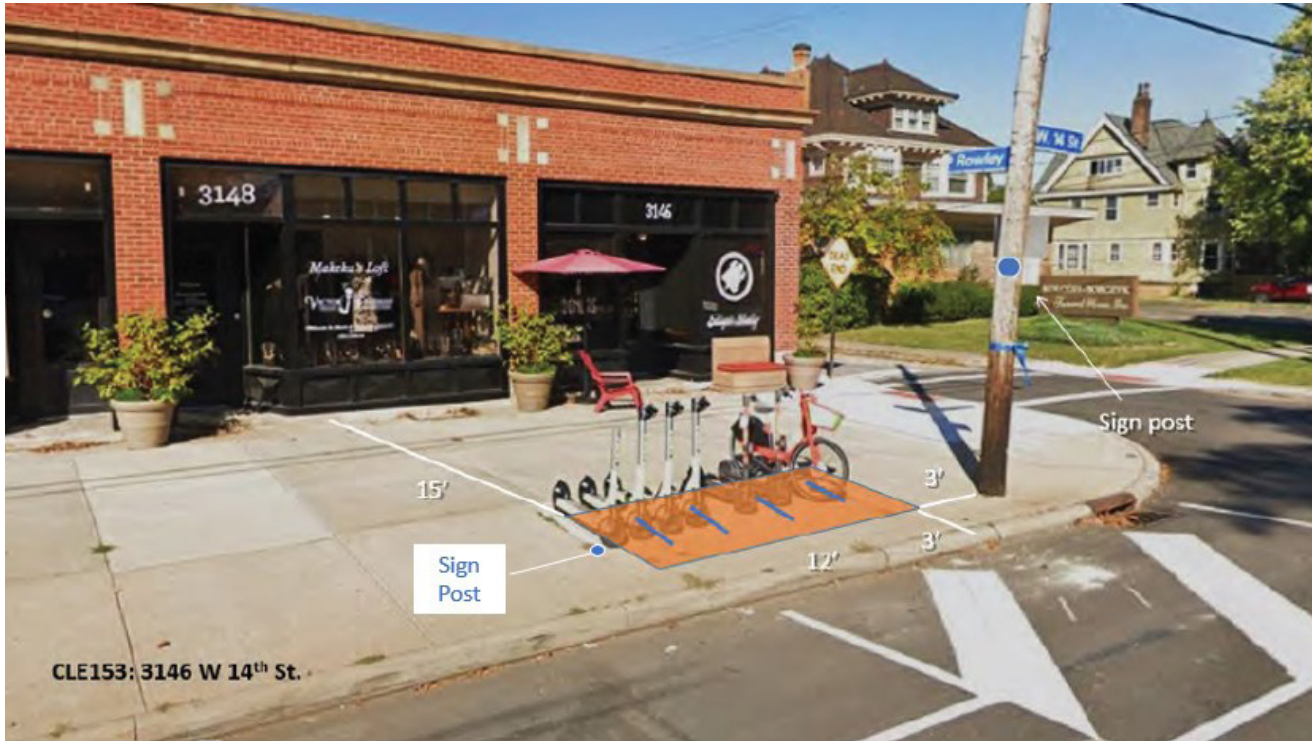
Sign Type: CLE

Sign Post: Existing Post (if permitted)

Post Height (if needed): 12'

Station CLE153

Cleveland, OH | 3146 W 14th St.



- Public ROW Line
- Parcel Line
- This Station
- Other Stations
- NR/Local Historic Site
- NR Historic District

STATION DETAILS:

Address: 3146 W 14th St.

Municipality: Cleveland

Location Details: SW corner

Public ROW: Y

Bus Stop: N

On-Street Parking: N

Adjacent Historic Site: N

Placement Notes: 3' from curb to box and telephone pole

STATION TYPOLOGY:

Typology: 2B

Vehicle Capacity: 8

Number of Racks: 4

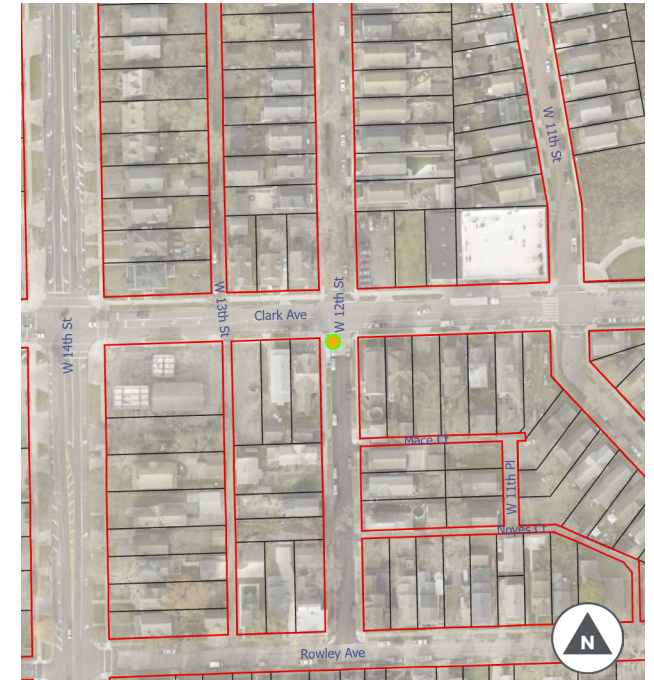
Sign Type: CLE

Sign Post: Existing Pole (if permitted)

Post Height (if needed): 12'

Station CLE154

Cleveland, OH | 3101 W. 12th St.



STATION DETAILS:

Address: 3101 W. 12th St.

Municipality: Cleveland

Location Details: SW corner

Public ROW: Y

Bus Stop: N

On-Street Parking: Y

Adjacent Historic Site: N

Placement Notes: 18" from curb to box; flush with tree lawn

STATION TYPOLOGY:

Typology: 2A

Vehicle Capacity: 10

Number of Racks: 5

Sign Type: CLE

Sign Post: New 9' Post

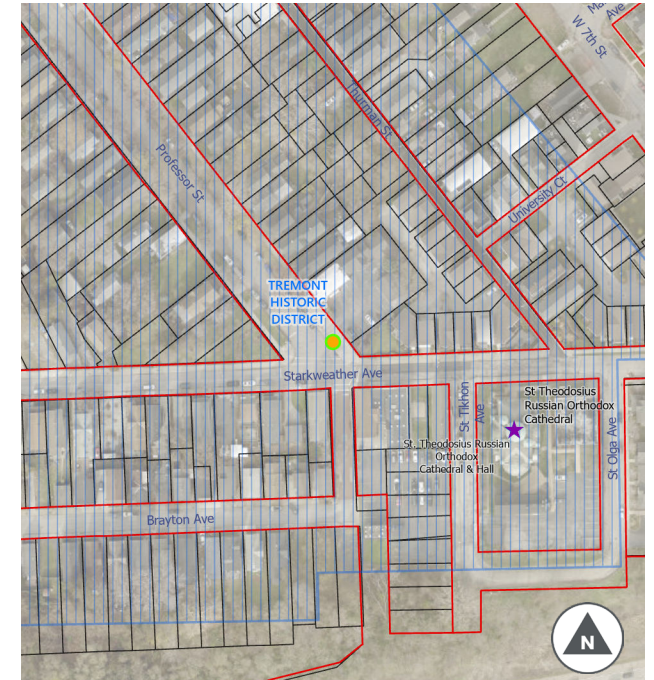
Post Height (if needed): 9'

Station CLE162

Cleveland, OH | 2511 Professor St.



CLE162: 2511 Professor St.



— Public ROW Line ● This Station ★/★ NR/Local Historic Site
— Parcel Line ● Other Stations ■■■ NR Historic District

STATION DETAILS:

Address: 2511 Professor St.
Municipality: Cleveland
Location Details: NE corner
Public ROW: Y
Bus Stop: N
On-Street Parking: N

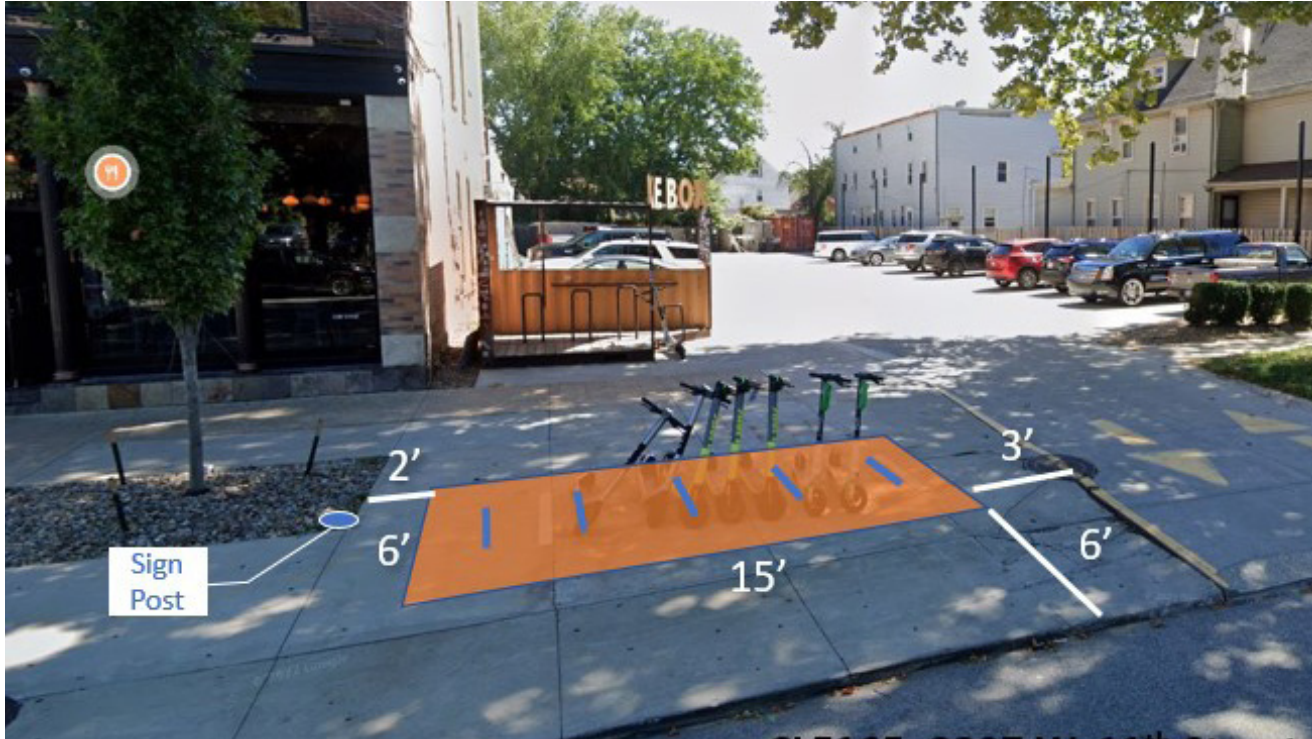
Adjacent Historic Site: Y (Tremont Historic District)
Placement Notes: 3' from curb and 7' from curb ramp to box

STATION TYPOLOGY:

Typology: 2A
Vehicle Capacity: 10
Number of Racks: 5
Sign Type: CLE
Sign Post: New 12' Post
Post Height (if needed): 12'

Station CLE165

Cleveland, OH | 2207 W 11th St.



— Public ROW Line ● This Station ★/★ NR/Local Historic Site
— Parcel Line ● Other Stations ■■■■■ NR Historic District

STATION DETAILS:

Address: 2207 W 11th St.

Municipality: Cleveland

Location Details: SE corner

Public ROW: Y

Bus Stop: N

On-Street Parking: Y

Adjacent Historic Site: Y (Tremont Historic District)

Placement Notes: 6' from curb to box, 2' from tree pit

STATION TYPOLOGY:

Typology: 2A

Vehicle Capacity: 10

Number of Racks: 5

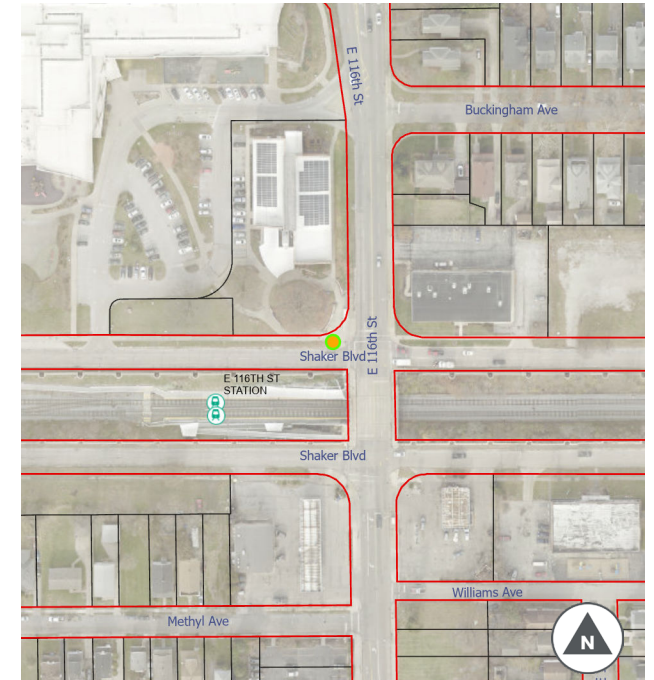
Sign Type: CLE

Sign Post: New 9' Post in tree pit

Post Height (if needed): 9'

Station CLE184

Cleveland, OH | 11599 Shaker Blvd.



- Public ROW Line
- Parcel Line
- This Station
- Other Stations
- NR/Local Historic Site
- NR Historic District

STATION DETAILS:

Address: 11599 Shaker Blvd.

Municipality: Cleveland

Location Details: NW corner

Public ROW: Y

Bus Stop: N

On-Street Parking: N

Adjacent Historic Site: N

Placement Notes: 3' from curb to box, 5' from hydrant

STATION TYPOLOGY:

Typology: 3A

Vehicle Capacity: 6

Number of Racks: 3

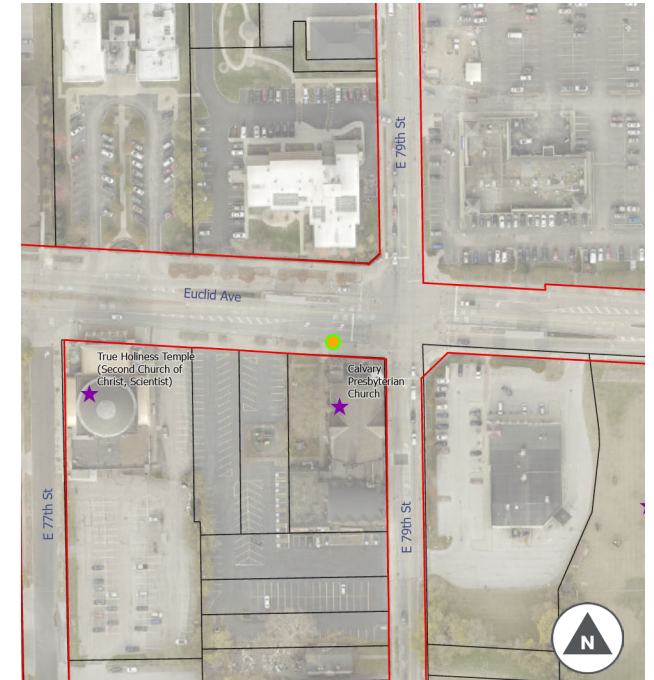
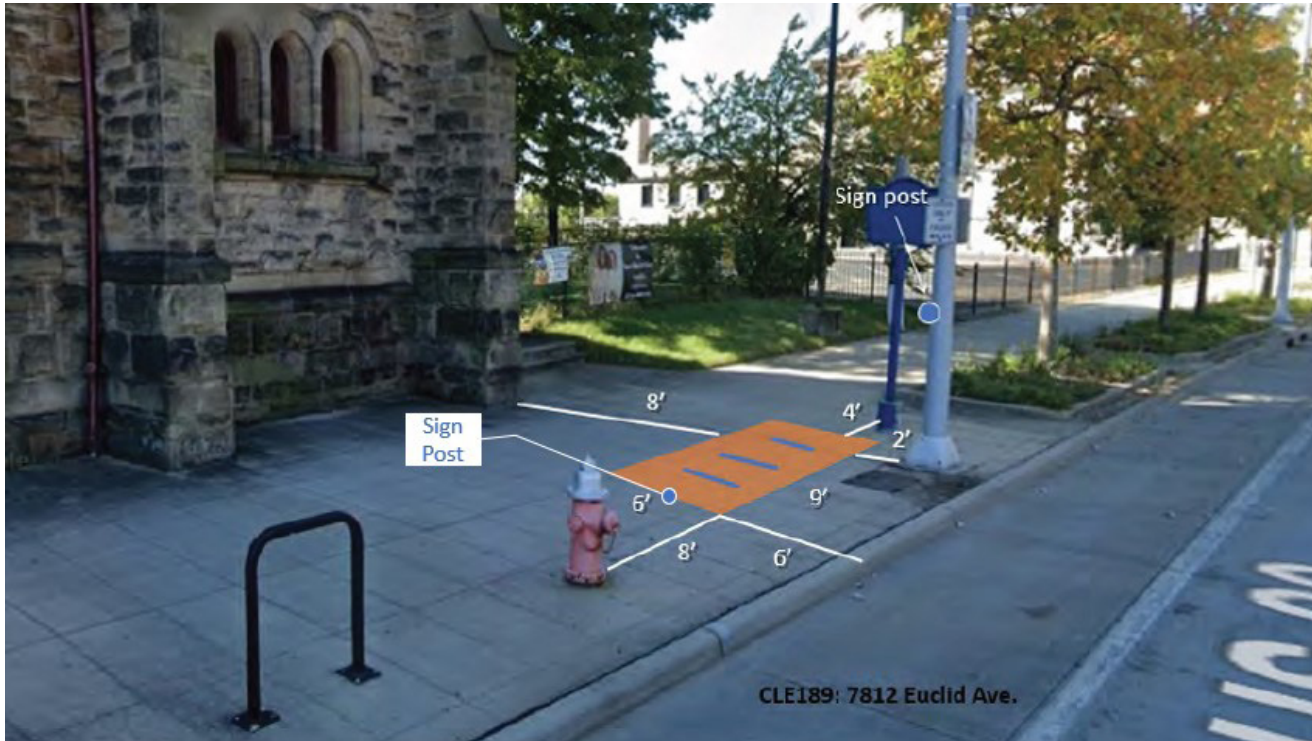
Sign Type: CLE

Sign Post: Existing Pole (if permitted)

Post Height (if needed): 9'

Station CLE189

Cleveland, OH | 7812 Euclid Ave



- Public ROW Line
- Parcel Line
- This Station
- Other Stations
- NR/Local Historic Site
- NR Historic District

STATION DETAILS:

Address: 7812 Euclid Ave

Municipality: Cleveland

Location Details: SW corner

Public ROW: Y

Bus Stop: N

On-Street Parking: N

Adjacent Historic Site: N

Placement Notes: 6' from curb to box, 8' from fire hydrant

STATION TYPOLOGY:

Typology: 3A

Vehicle Capacity: 6

Number of Racks: 3

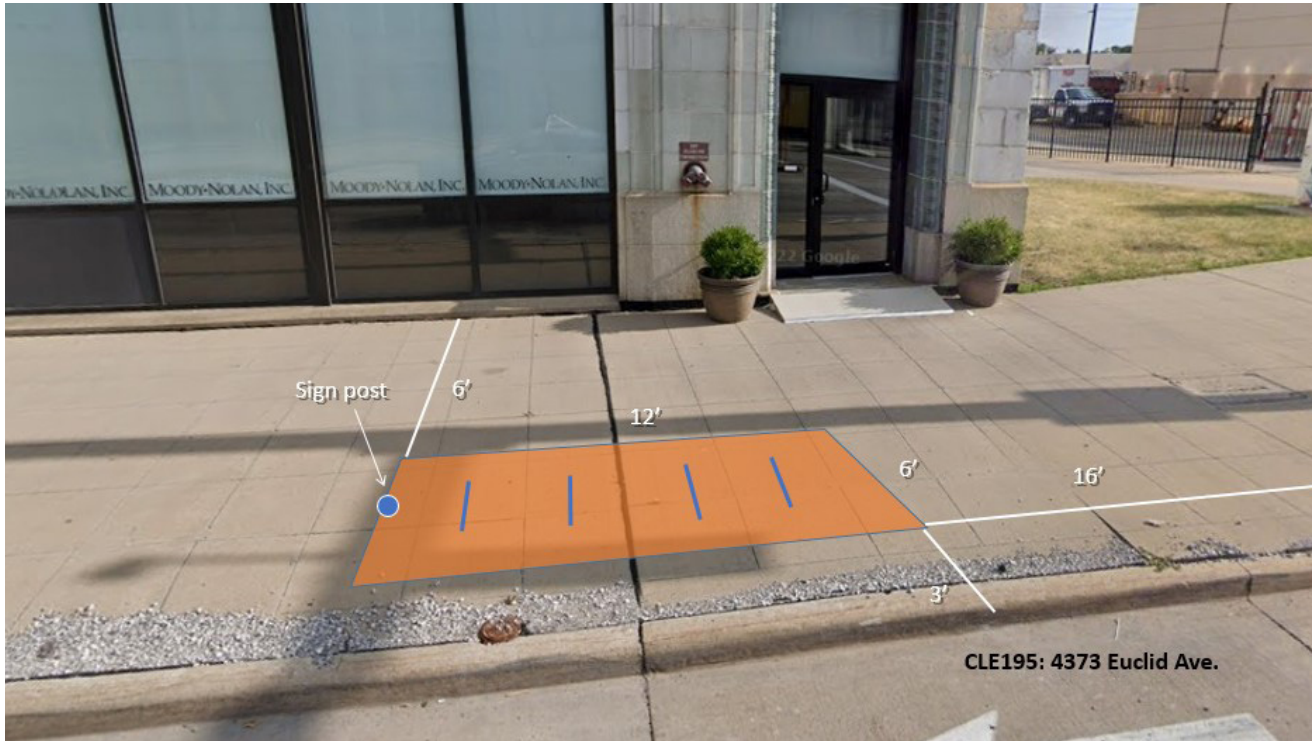
Sign Type: CLE

Sign Post: Existing Pole (if permitted)

Post Height (if needed): 12'

Station CLE195

Cleveland, OH | 4373 Euclid Ave



- Public ROW Line
- Parcel Line
- This Station
- Other Stations
- NR/Local Historic Site
- NR Historic District

STATION DETAILS:

Address: 4373 Euclid Ave

Municipality: Cleveland

Location Details: NE corner

Public ROW: Y

Bus Stop: N

On-Street Parking: N

Adjacent Historic Site: Y (Midtown Historic District)

Placement Notes: 3' from curb to box; 16' from crosswalk

STATION TYPOLOGY:

Typology: 2B

Vehicle Capacity: 8

Number of Racks: 4

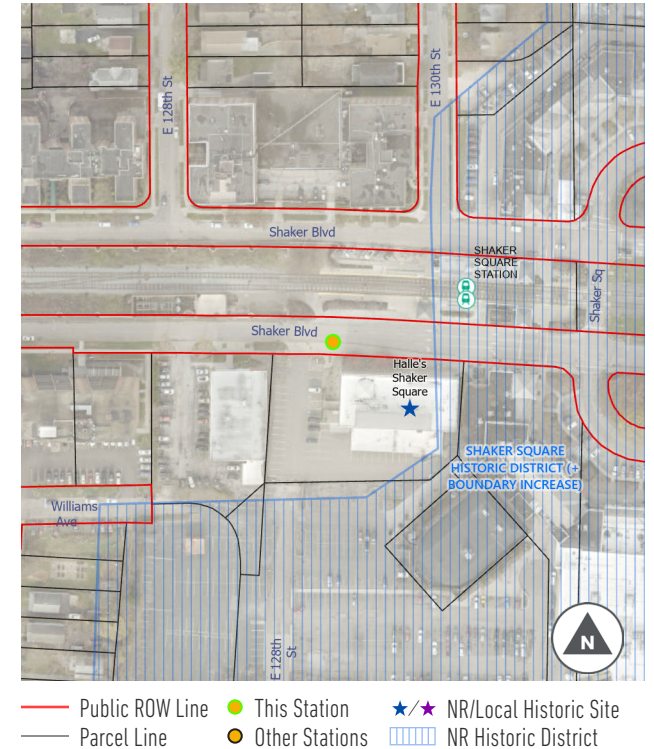
Sign Type: CLE

Sign Post: New 12' Post

Post Height (if needed): 12'

Station CLE201

Cleveland, OH | 12904 Shaker Blvd.



STATION DETAILS:

Address: 12904 Shaker Blvd.

Municipality: Cleveland

Location Details: West of SEIU driveway

Public ROW: Y

Bus Stop: N

On-Street Parking: N

Adjacent Historic Site: Y (Shaker Square Historic District)

Placement Notes: 3' from curb to box; 6' from fire hydrant

STATION TYPOLOGY:

Typology: 2B

Vehicle Capacity: 8

Number of Racks: 4

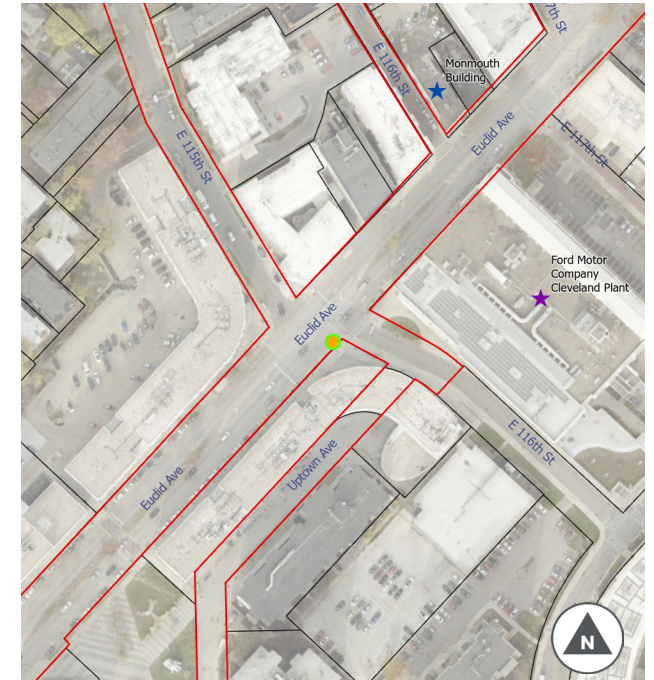
Sign Type: CLE

Sign Post: New 12' Post

Post Height (if needed): 12'

Station CLE206

Cleveland, OH | 11580 Euclid Ave



- Public ROW Line
- Parcel Line
- This Station
- Other Stations
- NR/Local Historic Site
- NR Historic District

STATION DETAILS:

Address: 11580 Euclid Ave

Municipality: Cleveland

Location Details: SW Corner

Public ROW: Y

Bus Stop: N

On-Street Parking: N

Adjacent Historic Site: N

Placement Notes: 3' from curb to box; 5' from utility cover to box

STATION TYPOLOGY:

Typology: 2A

Vehicle Capacity: 10

Number of Racks: 5

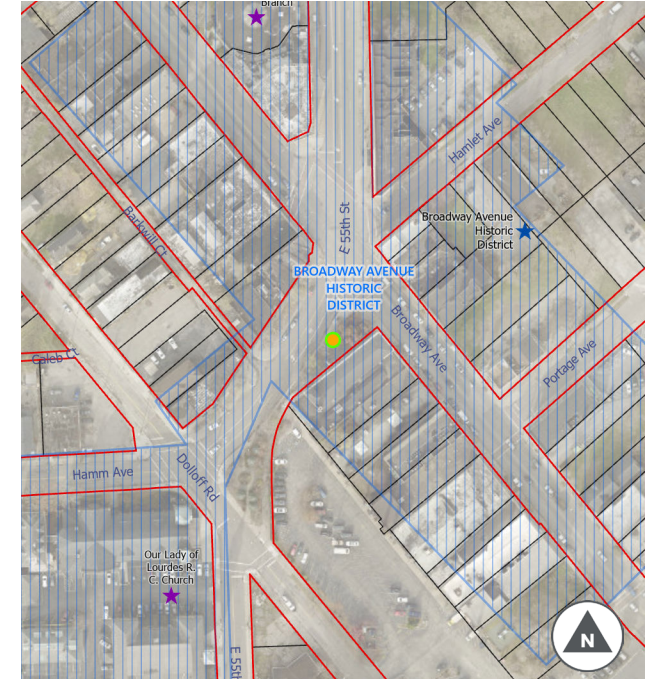
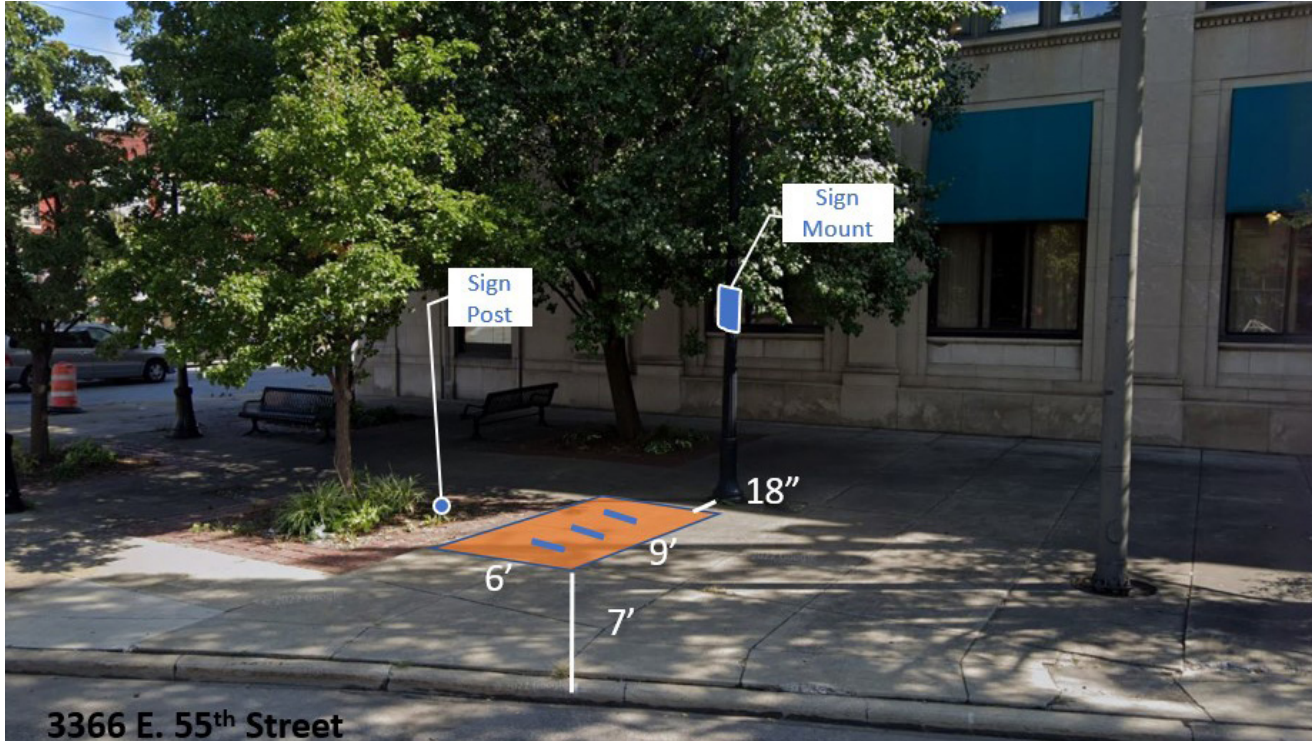
Sign Type: CLE

Sign Post: New 12' Post

Post Height (if needed): 12'

Station CLE221

Cleveland, OH | 3366 E 55th St



- Public ROW Line
- Parcel Line
- This Station
- Other Stations
- NR/Local Historic Site
- NR Historic District

STATION DETAILS:

Address: 3366 E 55th St

Municipality: Cleveland

Location Details: South corner of E. 55 & Broadway

Public ROW: Y

Bus Stop: N

On-Street Parking: N

Adjacent Historic Site: Y (Broadway Avenue Historic District)

Placement Notes: Box flush with planter brick, 18" from light post

STATION TYPOLOGY:

Typology: 3A

Vehicle Capacity: 6

Number of Racks: 3

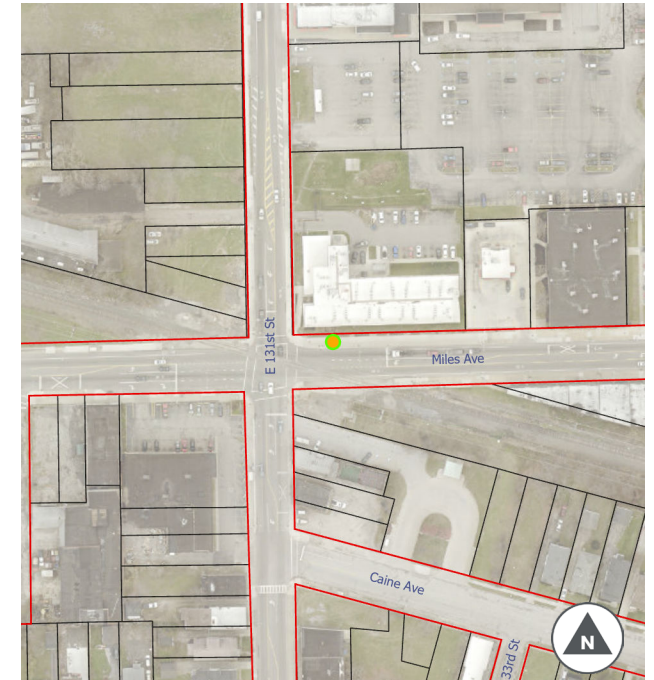
Sign Type: CLE

Sign Post: Existing Pole (if permitted)

Post Height (if needed): 9'

Station CLE225

Cleveland, OH | 13201 Miles rd.



- Public ROW Line
- Parcel Line
- This Station
- Other Stations
- NR/Local Historic Site
- NR Historic District

STATION DETAILS:

Address: 13201 Miles rd.

Municipality: Cleveland

Location Details: NE corner

Public ROW: Y

Bus Stop: N

On-Street Parking: N

Adjacent Historic Site: N

Placement Notes: 3' from curb and 5' from pole to box

STATION TYPOLOGY:

Typology: 2B

Vehicle Capacity: 8

Number of Racks: 4

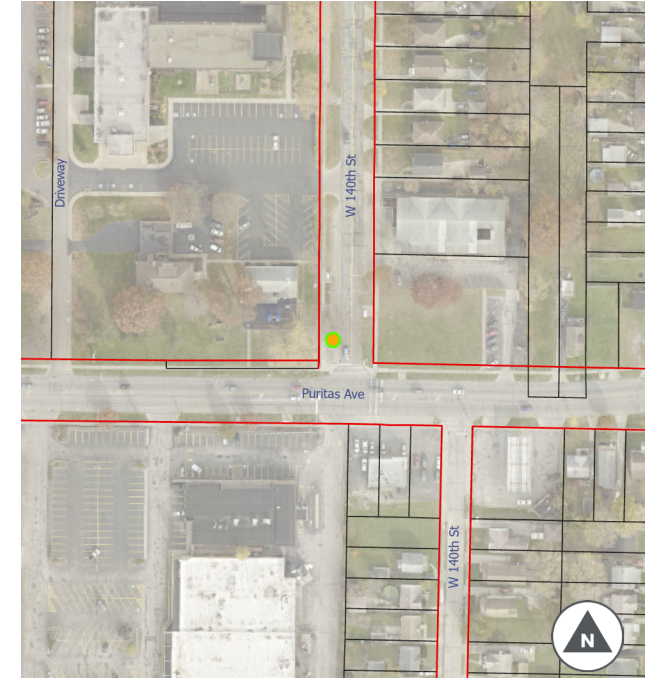
Sign Type: CLE

Sign Post: Existing Pole (if permitted)

Post Height (if needed): 12'

Station CLE226

Cleveland, OH | 4442 W 140th St



- Public ROW Line
- Parcel Line
- This Station
- Other Stations
- NR/Local Historic Site
- NR Historic District

STATION DETAILS:

Address: 4442 W 140th St

Municipality: Cleveland

Location Details: NW corner

Public ROW: Y

Bus Stop: Y

On-Street Parking: N

Adjacent Historic Site: N

Placement Notes: 3' from curb to box; box flush with grass

STATION TYPOLOGY:

Typology: 2B

Vehicle Capacity: 8

Number of Racks: 4

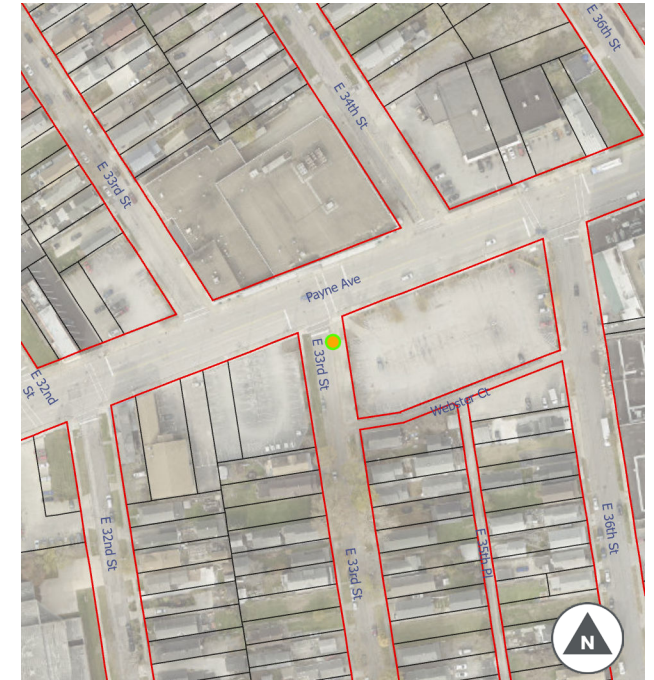
Sign Type: CLE

Sign Post: New 9' Post

Post Height (if needed): 9'

Station CLE234

Cleveland, OH | 1700 E 33rd St



- Public ROW Line
- Parcel Line
- This Station
- Other Stations
- NR/Local Historic Site
- NR Historic District

STATION DETAILS:

Address: 1700 E 33rd St

Municipality: Cleveland

Location Details: SE corner

Public ROW: Y

Bus Stop: N

On-Street Parking: N

Adjacent Historic Site: N

Placement Notes: 3' from curb and pole to box

STATION TYPOLOGY:

Typology: 2B

Vehicle Capacity: 8

Number of Racks: 4

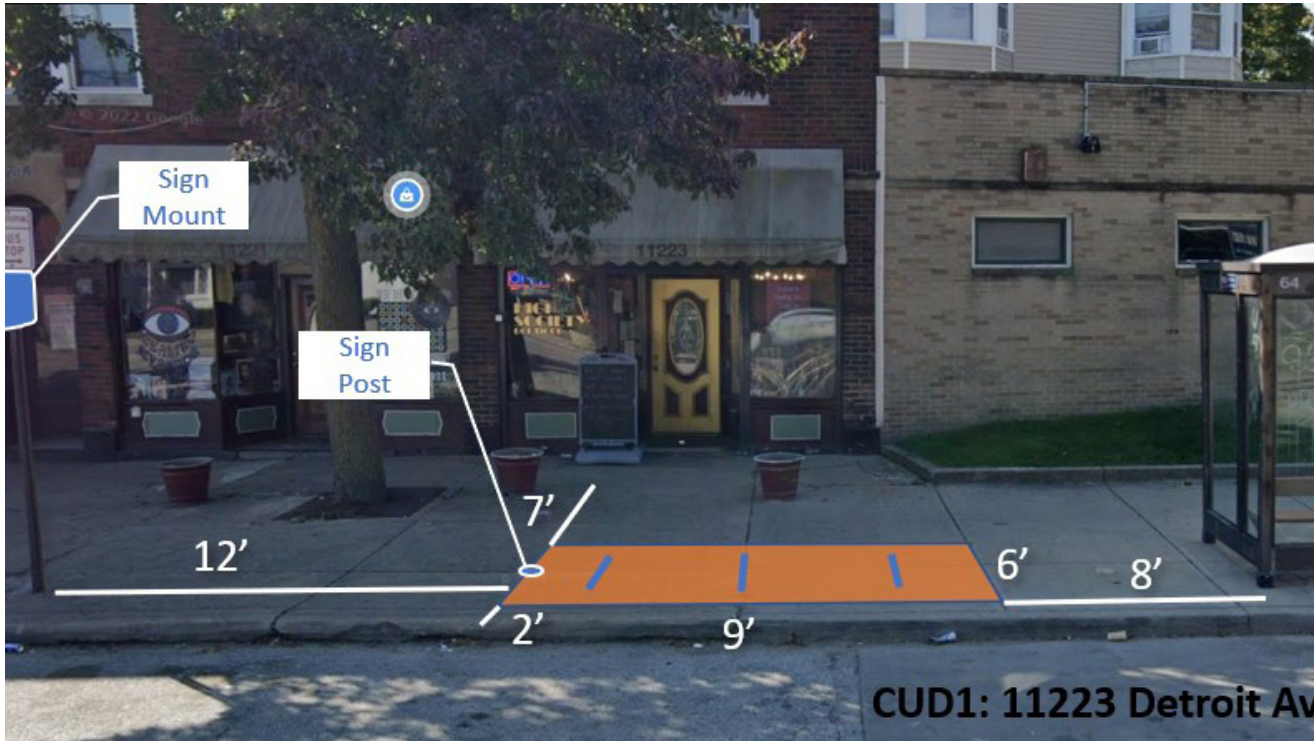
Sign Type: CLE

Sign Post: Existing Pole (if permitted)

Post Height (if needed): 12'

Station CUD1

Cleveland, OH | 11223 Detroit Ave



STATION DETAILS:

Address: 11223 Detroit Ave
Municipality: Cleveland
Location Details: SE Corner (east of bus stop)
Public ROW: Y
Bus Stop: Y
On-Street Parking: N

Adjacent Historic Site: N
Placement Notes: 2' from curb to box, 12' from sign post to box

STATION TYPOLOGY:

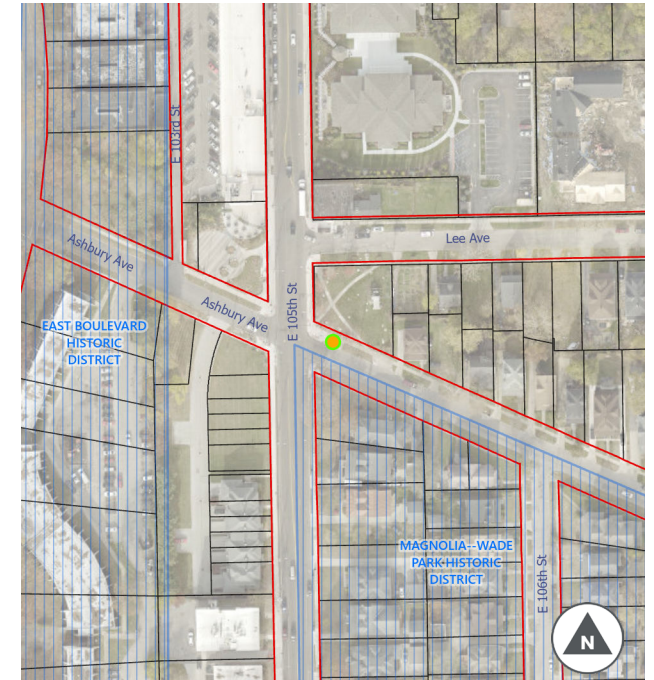
Typology: 3A
Vehicle Capacity: 6
Number of Racks: 3
Sign Type: CLE
Sign Post: Existing Post (if permitted)
Post Height (if needed): 12'

Station GLE1

Cleveland, OH | 10501 Ashbury Ave



GLE1: 10509 Ashbury Ave.



— Public ROW Line ● This Station ★/★ NR/Local Historic Site
— Parcel Line ● Other Stations ■■■ NR Historic District

STATION DETAILS:

Address: 10501 Ashbury Ave

Municipality: Cleveland

Location Details: NE corner

Public ROW: Y

Bus Stop: N

On-Street Parking: N

Adjacent Historic Site: Y (Magnolia--Wade Park Historic District)

Placement Notes: 3' from curb to box and flush with grass

STATION TYPOLOGY:

Typology: 2B

Vehicle Capacity: 8

Number of Racks: 4

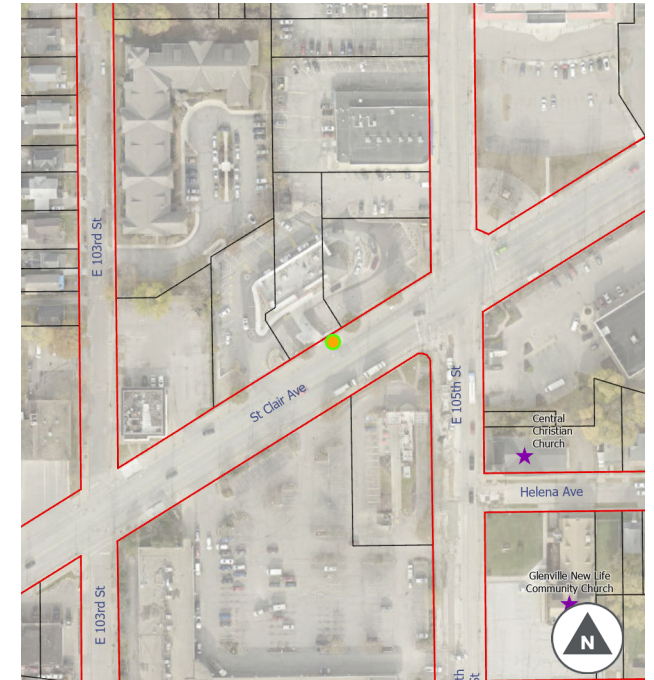
Sign Type: CLE

Sign Post: New 9' post in tree lawn

Post Height (if needed): 9'

Station GLE2

Cleveland, OH | 10430 St Clair Ave



- Public ROW Line
- Parcel Line
- This Station
- Other Stations
- NR/Local Historic Site
- NR Historic District

STATION DETAILS:

Address: 10430 St Clair Ave

Municipality: Cleveland

Location Details: NW corner

Public ROW: Y

Bus Stop: N

On-Street Parking: N

Adjacent Historic Site: N

Placement Notes: 3' from curb to box, 2' from telephone pole to box

STATION TYPOLOGY:

Typology: 2B

Vehicle Capacity: 8

Number of Racks: 4

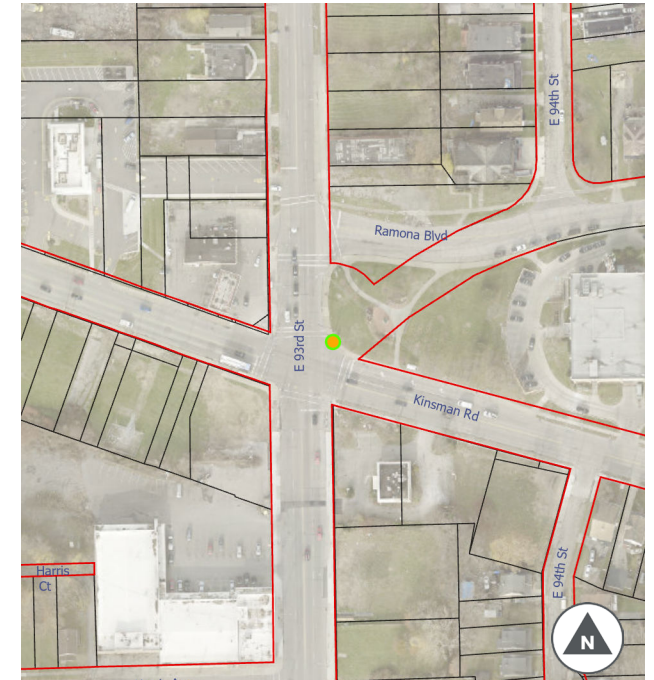
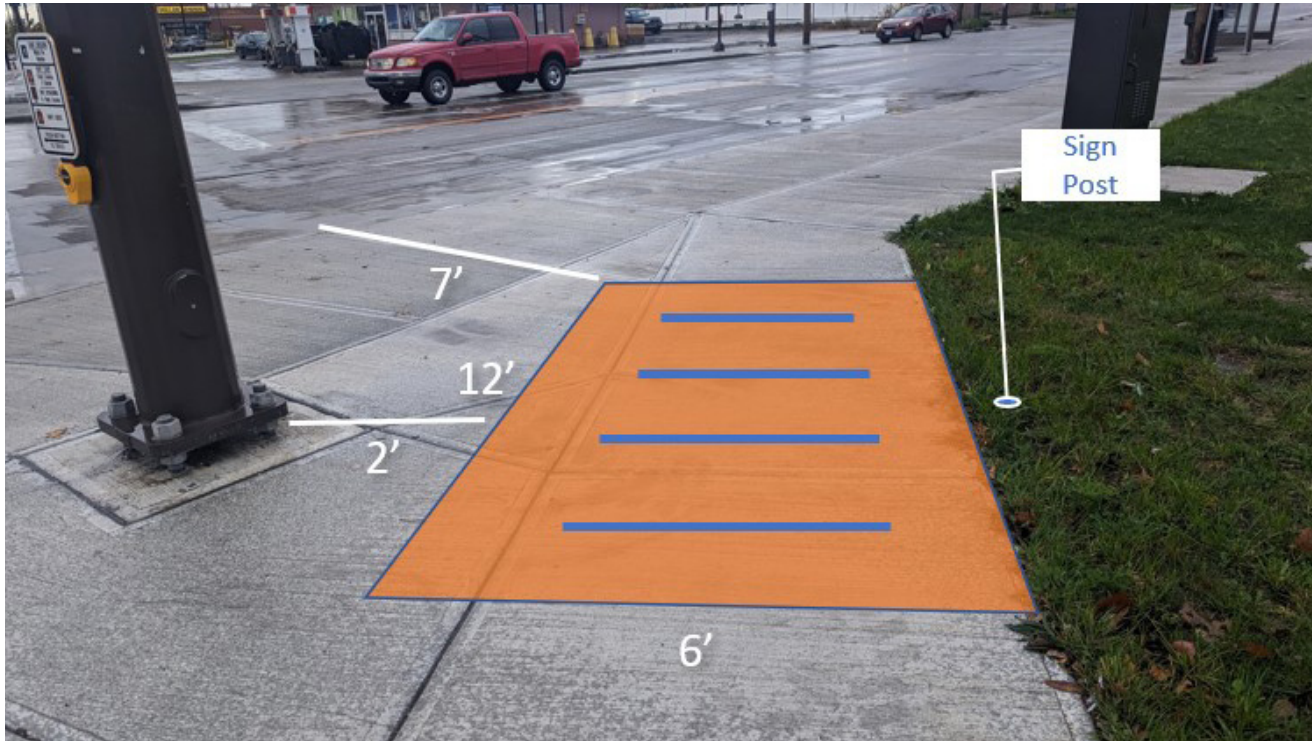
Sign Type: CLE

Sign Post: Existing Pole (if permitted)

Post Height (if needed): 12'

Station KIN001

Cleveland, OH | 9333 Kinsman Road



— Public ROW Line ● This Station ★/★ NR/Local Historic Site
— Parcel Line ● Other Stations ■■■ NR Historic District

STATION DETAILS:

Address: 9333 Kinsman Road

Municipality: Cleveland

Location Details: NE corner

Public ROW: Y

Bus Stop: N

On-Street Parking: N

Adjacent Historic Site: N

Placement Notes: 2' from utility pole to box, flush with grass, 7' from curb to box corner

STATION TYPOLOGY:

Typology: 2B

Vehicle Capacity: 8

Number of Racks: 4

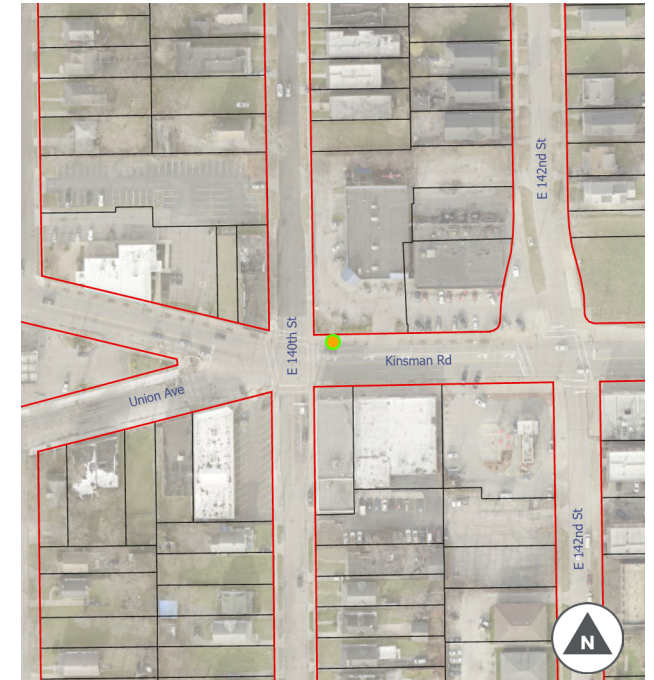
Sign Type: CLE

Sign Post: New 9' Post in grass

Post Height (if needed): 9'

Station KIN003

Cleveland, OH | 14000 Kinsman Rd



— Public ROW Line ● This Station ★/★ NR/Local Historic Site
— Parcel Line ● Other Stations ■ NR Historic District

STATION DETAILS:

Address: 14000 Kinsman Rd

Municipality: Cleveland

Location Details: NE Corner

Public ROW: Y

Bus Stop: N

On-Street Parking: N

Adjacent Historic Site: N

Placement Notes: 3' from curb to box, box flush with brick

STATION TYPOLOGY:

Typology: 2B

Vehicle Capacity: 8

Number of Racks: 4

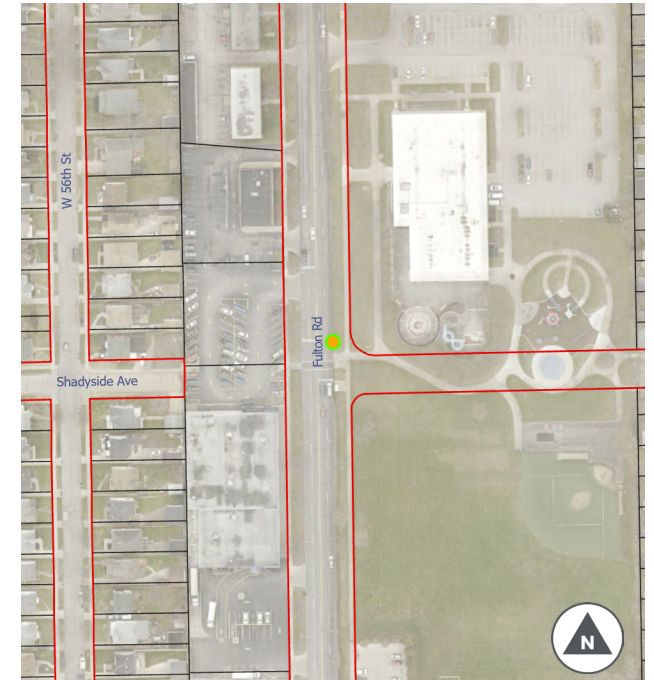
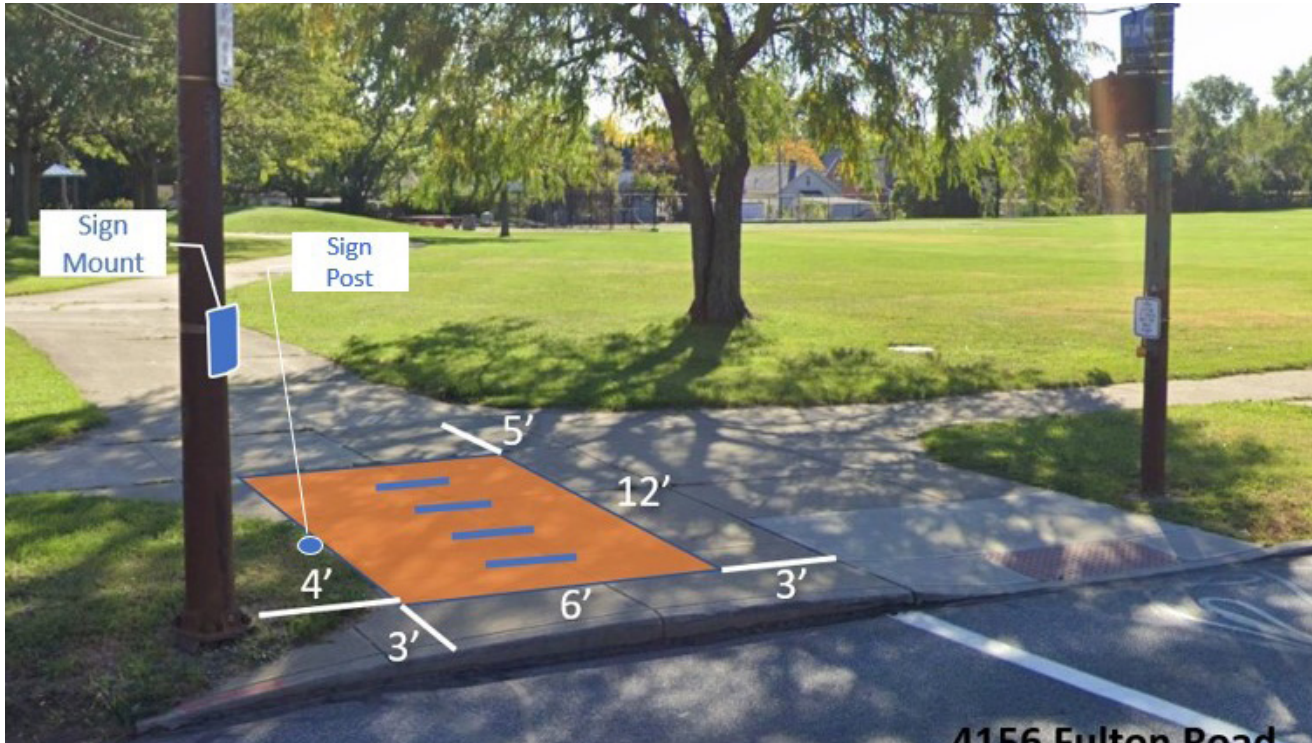
Sign Type: CLE

Sign Post: New 12' post

Post Height (if needed): 12'

Station OB7

Cleveland, OH | 4156 Fulton Rd.



STATION DETAILS:

Address: 4156 Fulton Rd.

Municipality: Cleveland

Location Details: East side of Fulton

Public ROW: Y

Bus Stop: Y

On-Street Parking: N

Adjacent Historic Site: N

Placement Notes: 3' from curb to box; box flush with tree lawn; racks parallel to curb

STATION TYPOLOGY:

Typology: 2B

Vehicle Capacity: 8

Number of Racks: 4

Sign Type: CLE

Sign Post: Existing Pole (if permitted)

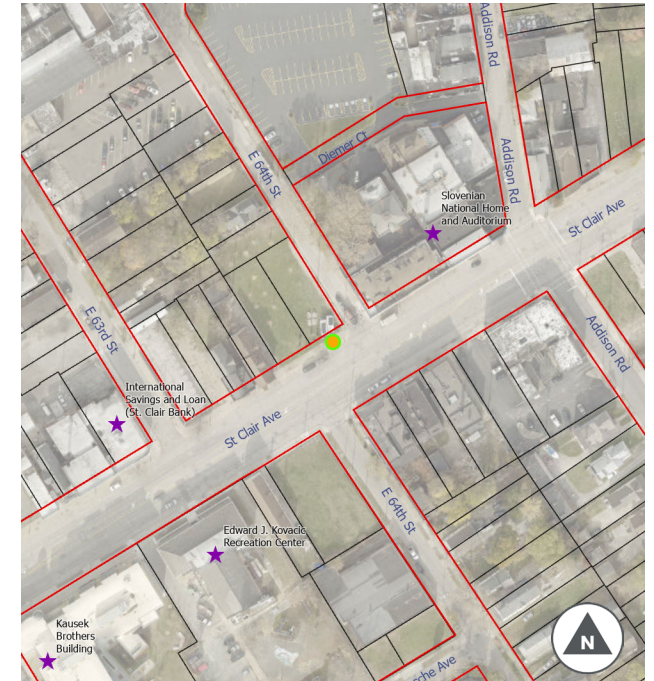
Post Height (if needed): 9'

Station SC2

Cleveland, OH | 6321 St. Clair Ave.



SC2: 6321 St. Clair Ave.



— Public ROW Line ● This Station ★/★ NR/Local Historic Site
— Parcel Line ● Other Stations ■ NR Historic District

STATION DETAILS:

Address: 6321 St. Clair Ave.

Municipality: Cleveland

Location Details: NW Corner

Public ROW: Y

Bus Stop: N

On-Street Parking: Y

Adjacent Historic Site: N

Placement Notes: 18" from curb to box; centered between tree pit and utility pole

STATION TYPOLOGY:

Typology: 2B

Vehicle Capacity: 8

Number of Racks: 4

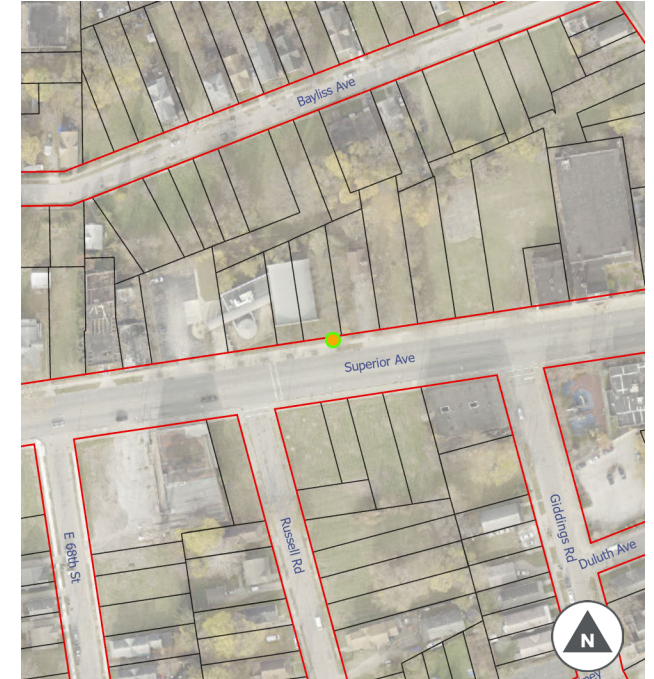
Sign Type: CLE

Sign Post: Existing Pole (if permitted)

Post Height (if needed): 12'

Station SC4

Cleveland, OH | 6905 Superior Ave.



- Public ROW Line
- Parcel Line
- This Station
- Other Stations
- NR/Local Historic Site
- NR Historic District

STATION DETAILS:

Address: 6905 Superior Ave.

Municipality: Cleveland

Location Details: North side of Superior,
East of Russel

Public ROW: Y

Bus Stop: Y

On-Street Parking: N

Adjacent Historic Site: N

Placement Notes: 2' from curb to box; centered between
tree pits

STATION TYPOLOGY:

Typology: 2A

Vehicle Capacity: 10

Number of Racks: 5

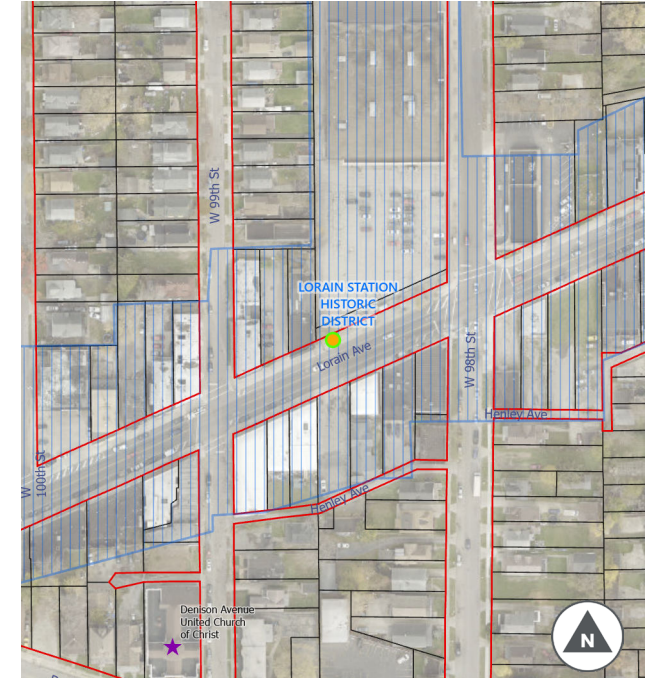
Sign Type: CLE

Sign Post: New 9' post in tree
pit

Post Height (if needed): 9'

Station WB1

Cleveland, OH | 9821 Lorain Ave



- Public ROW Line
- Parcel Line
- This Station
- Other Stations
- NR/Local Historic Site
- NR Historic District

STATION DETAILS:

Address: 9821 Lorain Ave

Municipality: Cleveland

Location Details: North side of Lorain, east of W. 98th

Public ROW: Y

Bus Stop: Y

On-Street Parking: N

Adjacent Historic Site: Y (Lorain Station Historic District)

Placement Notes: 3' from curb to box, 4' from tree pit

STATION TYPOLOGY:

Typology: 2B

Vehicle Capacity: 8

Number of Racks: 4

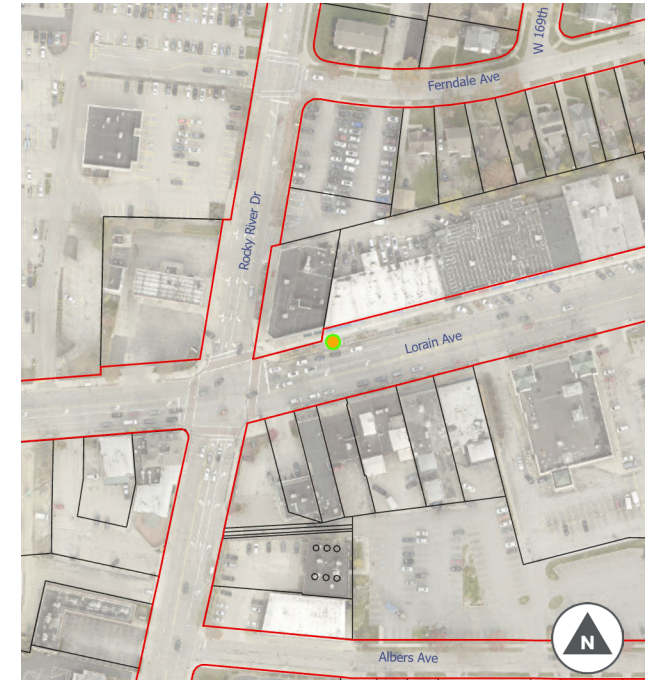
Sign Type: CLE

Sign Post: New 12' post

Post Height (if needed): 12'

Station WPK1

Cleveland, OH | 17019 Lorain Ave.



— Public ROW Line ● This Station ★/★ NR/Local Historic Site
— Parcel Line ● Other Stations ■ NR Historic District

STATION DETAILS:

Address: 17019 Lorain Ave.

Municipality: Cleveland

Location Details: NE Corner

Public ROW: Y

Bus Stop: N

On-Street Parking: N

Adjacent Historic Site: N

Placement Notes: Align and center between existing racks,
3' between each rack

STATION TYPOLOGY:

Typology: 3A

Vehicle Capacity: 6

Number of Racks: 3

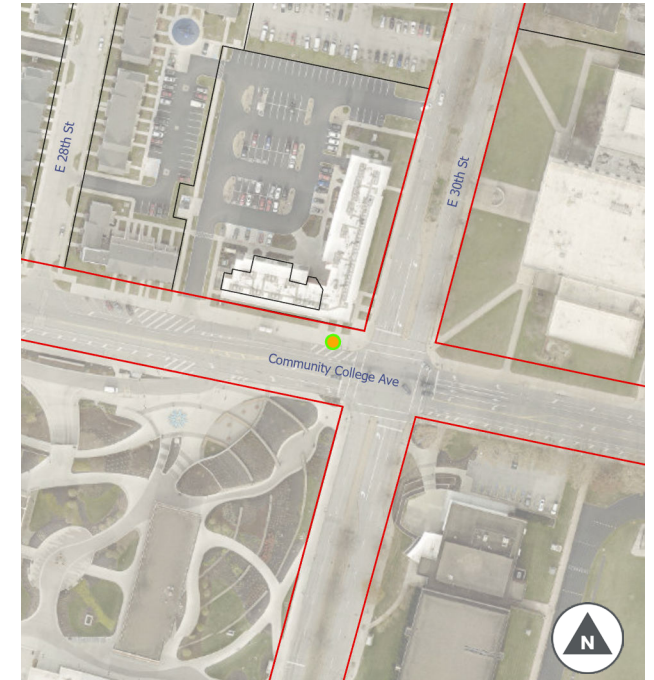
Sign Type: CLE

Sign Post: Existing Pole (if permitted)

Post Height (if needed): 9'

Station CLE170

Cleveland, OH | 3126 Community College Ave.



- Public ROW Line
- Parcel Line
- This Station
- Other Stations
- NR/Local Historic Site
- NR Historic District

STATION DETAILS:

Address: 3126 Community College Ave.

Municipality: Cleveland

Location Details: NW corner

Public ROW: Y

Bus Stop: Y

On-Street Parking: N

Adjacent Historic Site: N

Placement Notes: 3' from curb to box; 5' from telephone pole to box

STATION TYPOLOGY:

Typology: 2B

Vehicle Capacity: 8

Number of Racks: 4

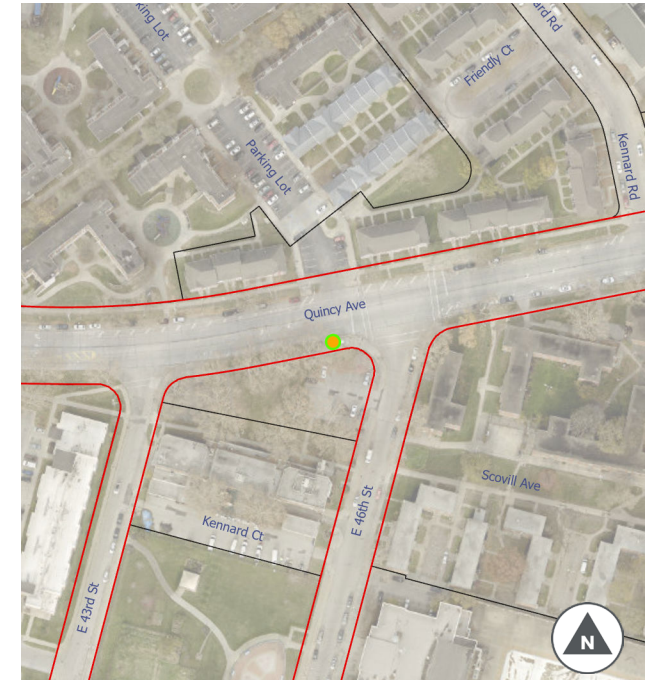
Sign Type: CLE

Sign Post: Existing Pole (if permitted)

Post Height (if needed): 12'

Station CLE174

Cleveland, OH | 4436 Quincy Ave.



— Public ROW Line ● This Station ★/★ NR/Local Historic Site
— Parcel Line ● Other Stations ■ NR Historic District

STATION DETAILS:

Address: 4436 Quincy Ave.

Municipality: Cleveland

Location Details: SW corner

Public ROW: Y

Bus Stop: Y

On-Street Parking: N

Adjacent Historic Site: N

Placement Notes: 3' from curb to box, centered between utility pole and x-walk sign

STATION TYPOLOGY:

Typology: 3A

Vehicle Capacity: 6

Number of Racks: 3

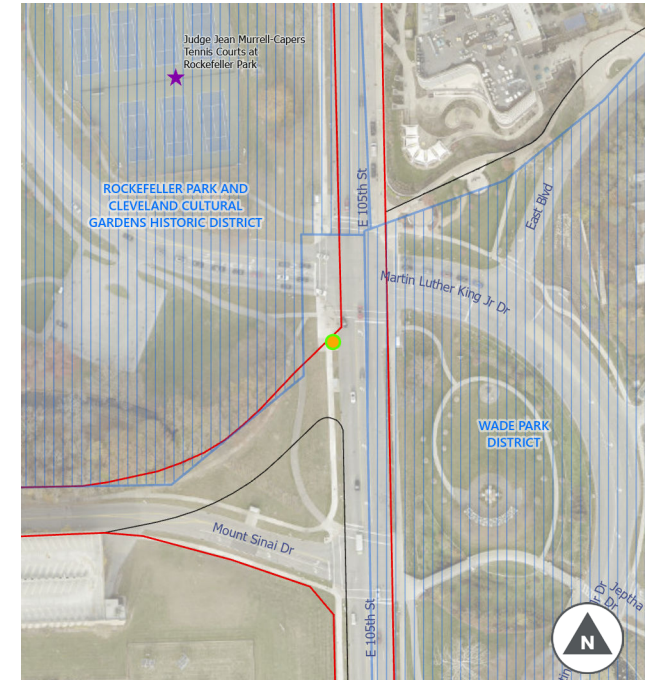
Sign Type: CLE

Sign Post: Existing Pole (if permitted)

Post Height (if needed): 12'

Station CLE211

Cleveland, OH | 1798 E 105th St



- Public ROW Line
- Parcel Line
- This Station
- Other Stations
- NR/Local Historic Site
- NR Historic District

STATION DETAILS:

Address: 1798 E 105th St

Municipality: Cleveland

Location Details: SW corner

Public ROW: Y

Bus Stop: Y

On-Street Parking: N

Adjacent Historic Site: Y (Rockefeller Park and Cleveland Cultural Gardens Historic District)

Placement Notes: 2' from curb to box; box flush with grass

STATION TYPOLOGY:

Typology: 2B

Vehicle Capacity: 8

Number of Racks: 4

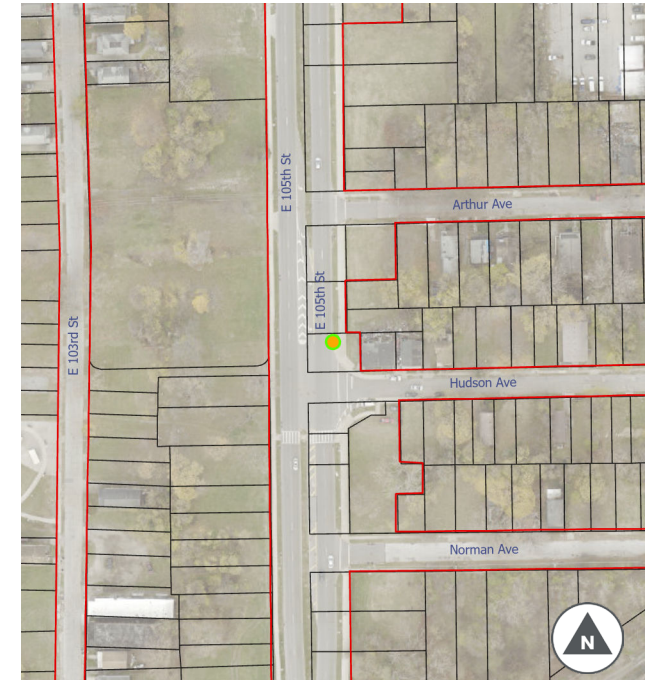
Sign Type: CLE

Sign Post: Existing Pole (if permitted)

Post Height (if needed): 9'

Station FFX2

Cleveland, OH | 2269 E 105th St



FFX2: 2269 E 105th St.

STATION DETAILS:

Address: 2269 E 105th St

Municipality: Cleveland

Location Details: NE corner

Public ROW: Y

Bus Stop: N

On-Street Parking: N

Adjacent Historic Site: N

Placement Notes: 2' from curb to box and flush with grass

STATION TYPOLOGY:

Typology: 3A

Vehicle Capacity: 6

Number of Racks: 3

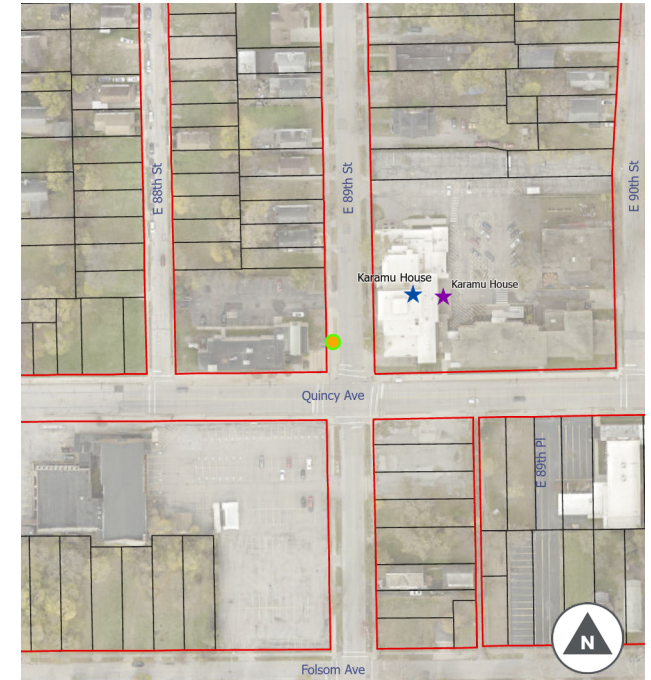
Sign Type: CLE

Sign Post: Existing Pole (if permitted)

Post Height (if needed): 9'

Station FFX3

Cleveland, OH | 2398 E 89th St



FFX3: 2398 E 89th St.

STATION DETAILS:

Address: 2398 E 89th St

Municipality: Cleveland

Location Details: NW corner

Public ROW: Y

Bus Stop: N

On-Street Parking: N

Adjacent Historic Site: N

Placement Notes: 2' from curb and telephone pole to box

STATION TYPOLOGY:

Typology: 2B

Vehicle Capacity: 8

Number of Racks: 4

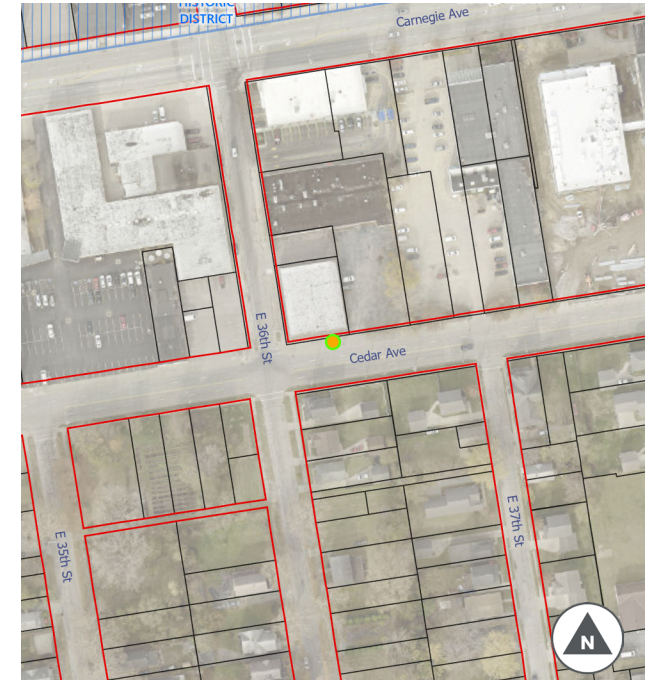
Sign Type: CLE

Sign Post: Existing Pole (if permitted)

Post Height (if needed): 12'

Station CLE178

Cleveland, OH | 3601 Cedar Ave.



- Public ROW Line
- Parcel Line
- This Station
- Other Stations
- NR/Local Historic Site
- NR Historic District

STATION DETAILS:

Address: 3601 Cedar Ave.

Municipality: Cleveland

Location Details: NE corner

Public ROW: Y

Bus Stop: Y

On-Street Parking: N

Adjacent Historic Site: N

Placement Notes: 3' from curb to box, 5' from hydrant to box

STATION TYPOLOGY:

Typology: 3A

Vehicle Capacity: 6

Number of Racks: 3

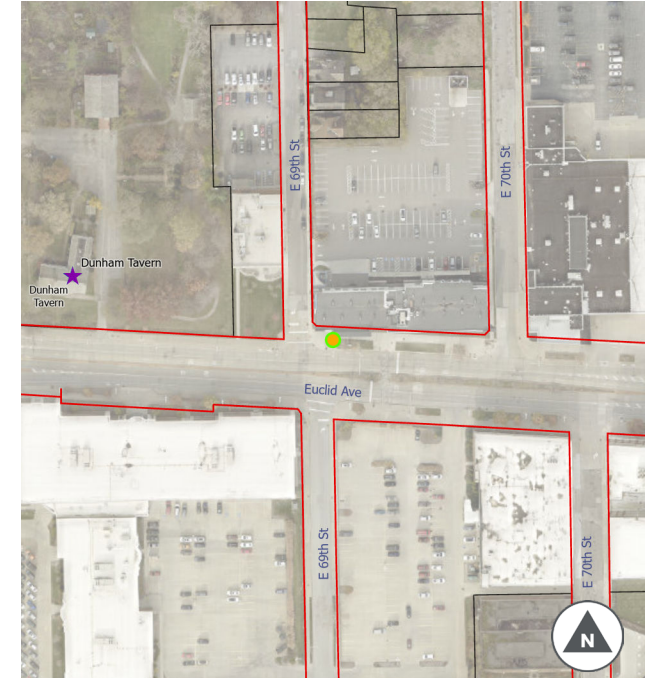
Sign Type: CLE

Sign Post: Existing Pole (if permitted)

Post Height (if needed): 12'

Station CLE193

Cleveland, OH | 6955 Euclid Ave.



— Public ROW Line ● This Station ★/★ NR/Local Historic Site
— Parcel Line ● Other Stations ▨ NR Historic District

STATION DETAILS:

Address: 6955 Euclid Ave.

Municipality: Cleveland

Location Details: NE corner

Public ROW: Y

Bus Stop: N

On-Street Parking: N

Adjacent Historic Site: N

Placement Notes: 3' from curb and bike rack to box

STATION TYPOLOGY:

Typology: 3A

Vehicle Capacity: 6

Number of Racks: 3

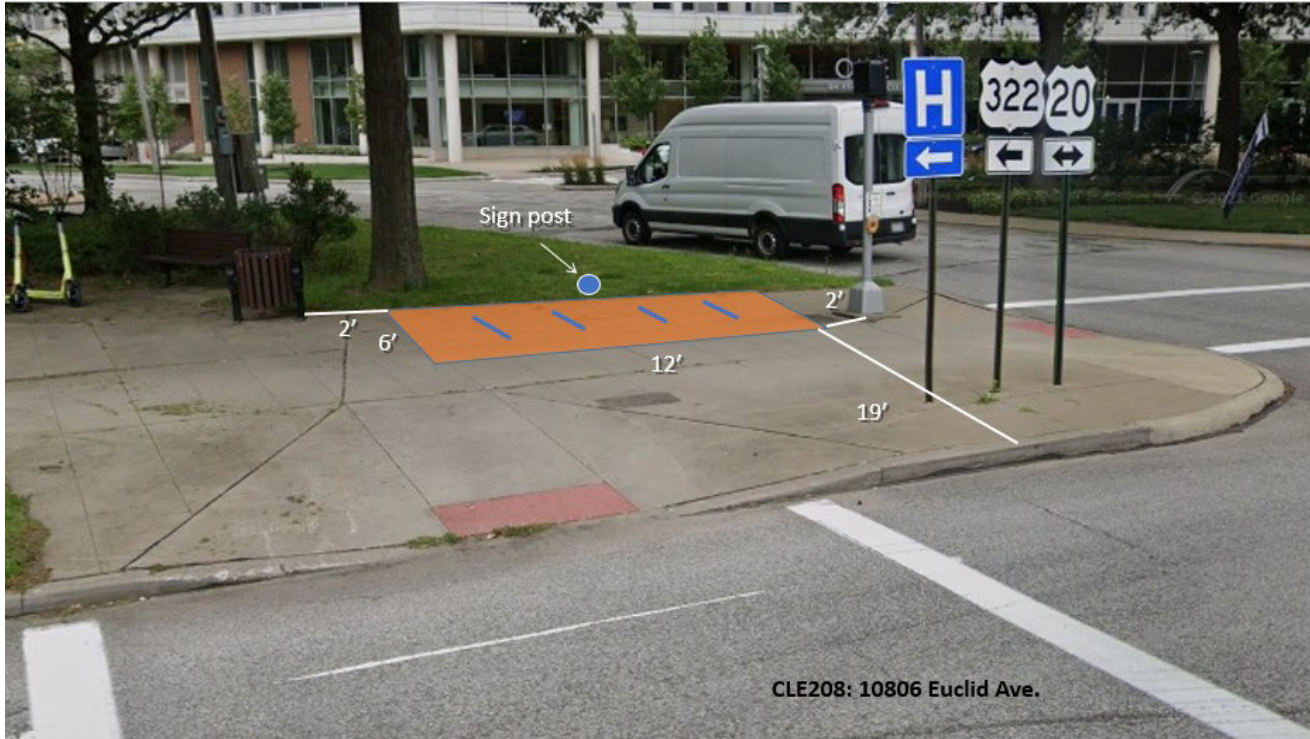
Sign Type: CLE

Sign Post: Existing Pole (if permitted)

Post Height (if needed): 9'

Station CLE208

Cleveland, OH | 10806 Euclid Ave



- Public ROW Line
- Parcel Line
- This Station
- Other Stations
- NR/Local Historic Site
- NR Historic District

STATION DETAILS:

Address: 10806 Euclid Ave

Municipality: Cleveland

Location Details: SE corner

Public ROW: Y

Bus Stop: N

On-Street Parking: N

Adjacent Historic Site: N

Placement Notes: box flush with grass, 2' from trash can and ped signal to box

STATION TYPOLOGY:

Typology: 2B

Vehicle Capacity: 8

Number of Racks: 4

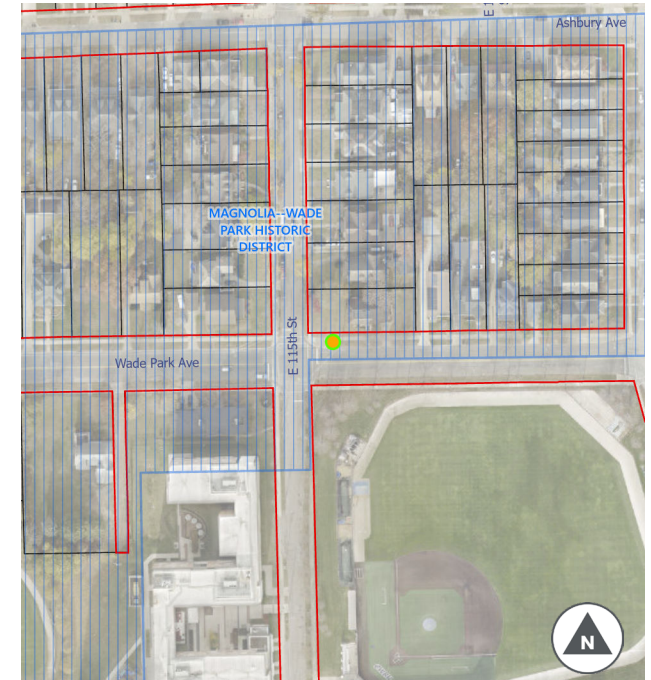
Sign Type: CLE

Sign Post: New 9' Post in grass

Post Height (if needed): 9'

Station CLE214

Cleveland, OH | 11501 Wade Park Ave



- Public ROW Line
- Parcel Line
- This Station
- Other Stations
- NR/Local Historic Site
- NR Historic District

STATION DETAILS:

Address: 11501 Wade Park Ave

Municipality: Cleveland

Location Details: NE corner

Public ROW: Y

Bus Stop: N

On-Street Parking: N

Adjacent Historic Site: Y (Magnolia--Wade Park Historic District)

Placement Notes: 3' from curb and 5' from telephone pole to box

STATION TYPOLOGY:

Typology: 2B

Vehicle Capacity: 8

Number of Racks: 4

Sign Type: CLE

Sign Post: Existing Pole (if permitted)

Post Height (if needed): 12'

Station LAR003

Cleveland, OH | 12702 Larchmere Blvd.



- Public ROW Line
- Parcel Line
- This Station
- Other Stations
- NR/Local Historic Site
- NR Historic District

STATION DETAILS:

Address: 12702 Larchmere Blvd.

Municipality: Cleveland

Location Details: NW Corner

Public ROW: Y

Bus Stop: N

On-Street Parking: N

Adjacent Historic Site: Y (Woodland-Larchmere Commercial Historic District)

Placement Notes: Box flush with brick, 3' from curb and curb ramp

STATION TYPOLOGY:

Typology: 2B

Vehicle Capacity: 8

Number of Racks: 4

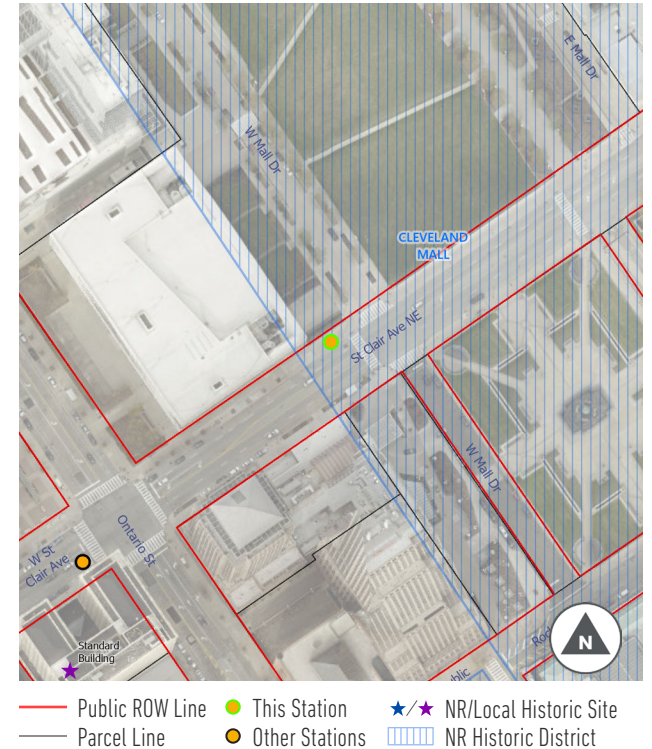
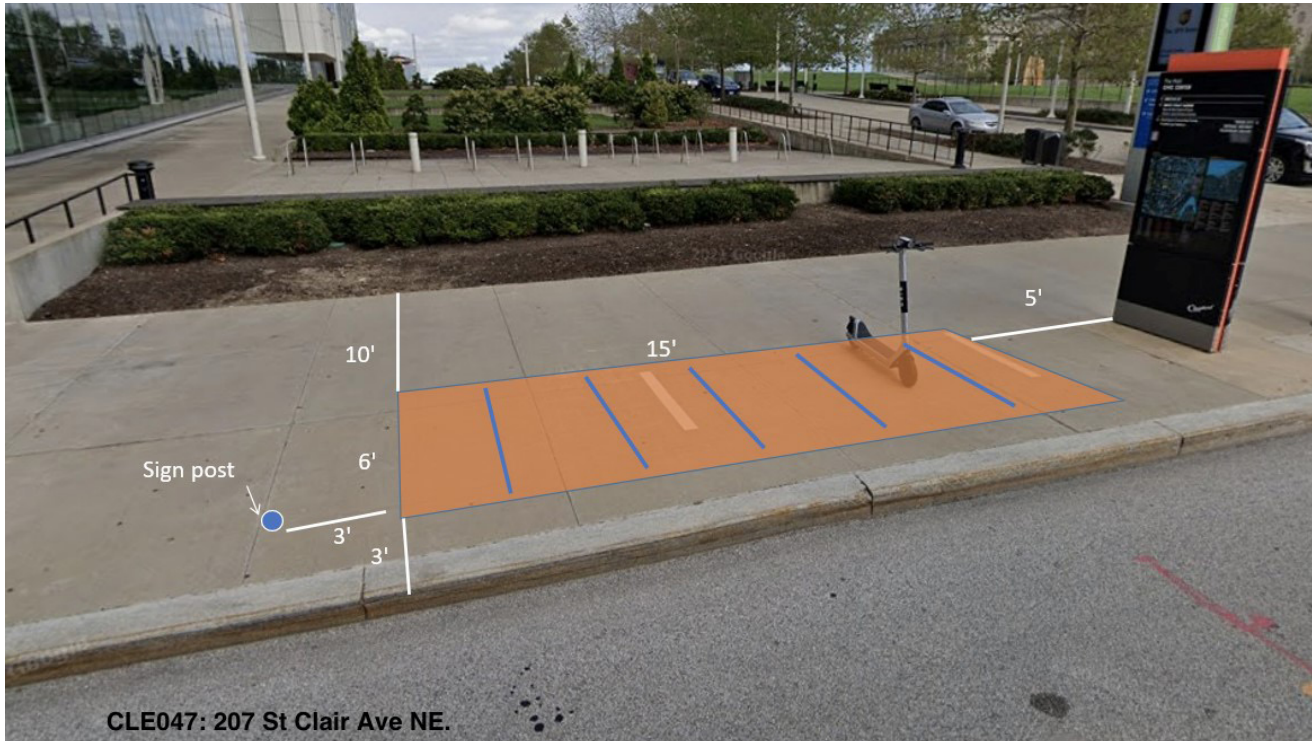
Sign Type: CLE

Sign Post: Existing Post

Post Height (if needed): 12'

Station CLE047

Cleveland, OH | 207 St. Clair Ave NE



STATION DETAILS:

Address: 207 St. Clair Ave NE

Municipality: Cleveland

Location Details: NE

Public ROW: Y

Bus Stop: N

On-Street Parking: N

Adjacent Historic Site: Y (Cleveland Mall)

Placement Notes: 3' from curb to box, 5' from sign

STATION TYPOLOGY:

Typology: 2A

Vehicle Capacity: 10

Number of Racks: 5

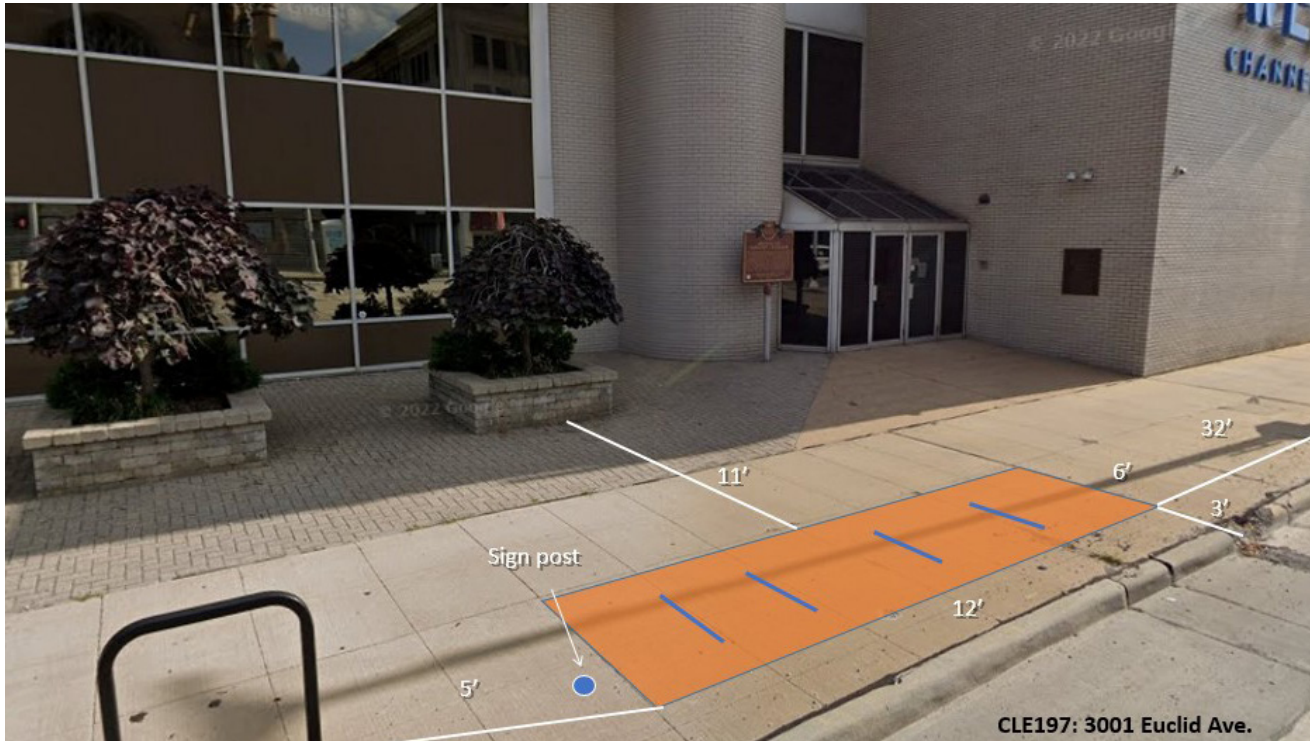
Sign Type: CLE

Sign Post: New 12' post

Post Height (if needed): 12'

Station CLE197

Cleveland, OH | 3001 Euclid Ave.



- Public ROW Line
- Parcel Line
- This Station
- Other Stations
- NR/Local Historic Site
- NR Historic District

STATION DETAILS:

Address: 3001 Euclid Ave.

Municipality: Cleveland

Location Details: NE corner

Public ROW: Y

Bus Stop: N

On-Street Parking: N

Adjacent Historic Site: Y (Midtown Historic District)

Placement Notes: 3' from curb to box, 5' from existing rack to box

STATION TYPOLOGY:

Typology: 2B

Vehicle Capacity: 8

Number of Racks: 4

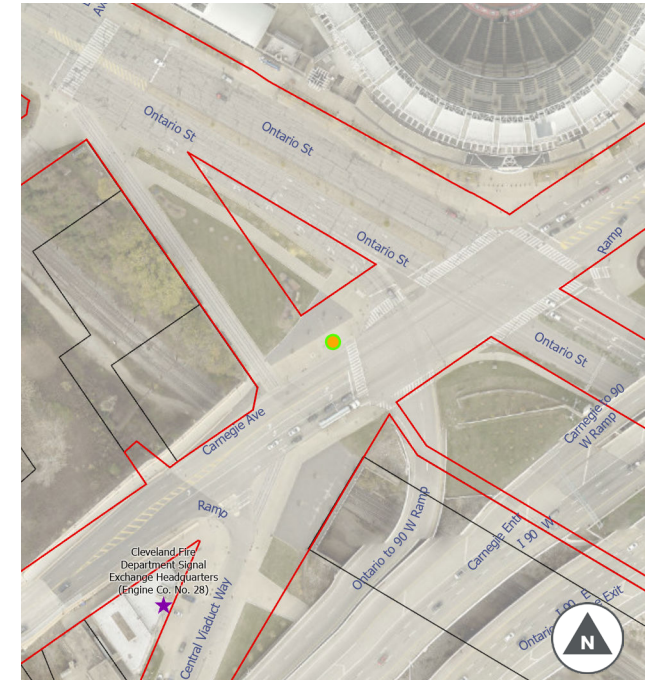
Sign Type: CLE

Sign Post: New 12' post

Post Height (if needed): 12'

Station CLE218

Cleveland, OH | 373 Carnegie Ave.



STATION DETAILS:

Address: 373 Carnegie Ave.

Municipality: Cleveland

Location Details: W corner

Public ROW: Y

Bus Stop: N

On-Street Parking: N

Adjacent Historic Site: N

Placement Notes: 3' from curb and light pole to box

STATION TYPOLOGY:

Typology: 2A

Vehicle Capacity: 10

Number of Racks: 5

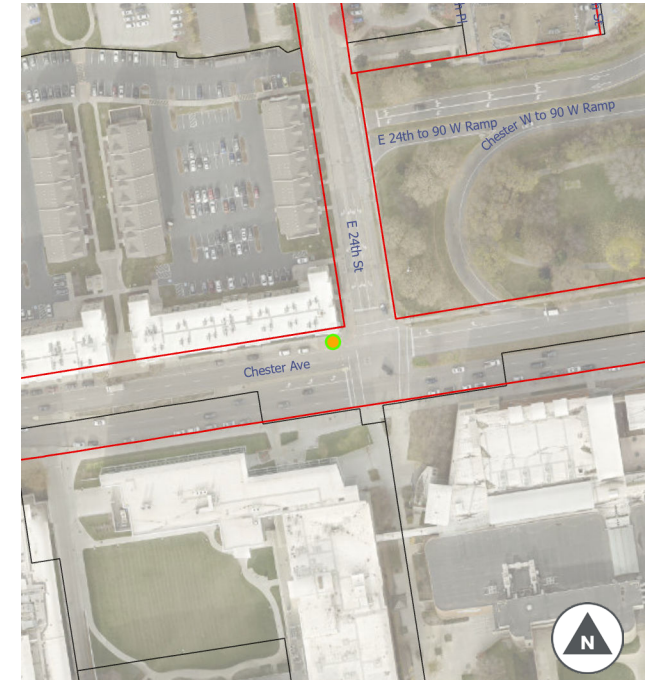
Sign Type: CLE

Sign Post: Existing Pole (if permitted)

Post Height (if needed): 12'

Station CLE230

Cleveland, OH | 2399 Chester Ave



- Public ROW Line
- Parcel Line
- This Station
- Other Stations
- NR/Local Historic Site
- NR Historic District

STATION DETAILS:

Address: 2399 Chester Ave

Municipality: Cleveland

Location Details: NW corner

Public ROW: Y

Bus Stop: N

On-Street Parking: N

Adjacent Historic Site: N

Placement Notes: 3' from curb and pole to box

STATION TYPOLOGY:

Typology: 2B

Vehicle Capacity: 8

Number of Racks: 4

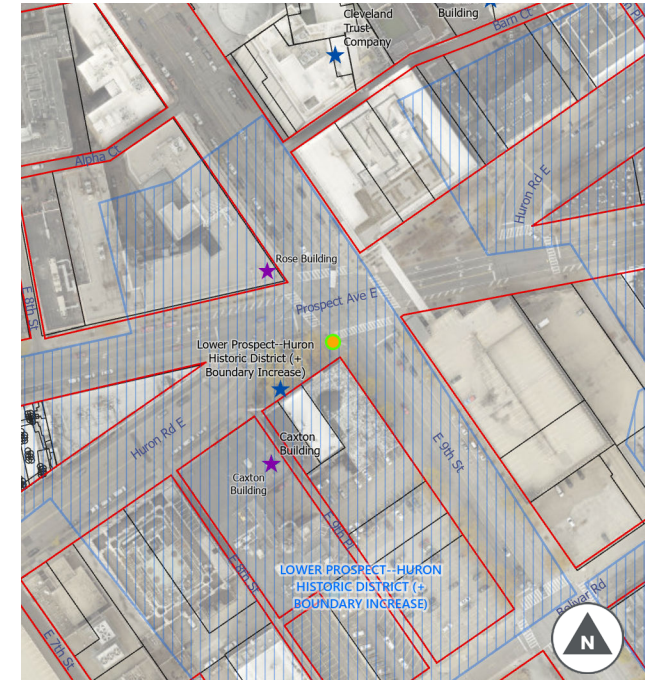
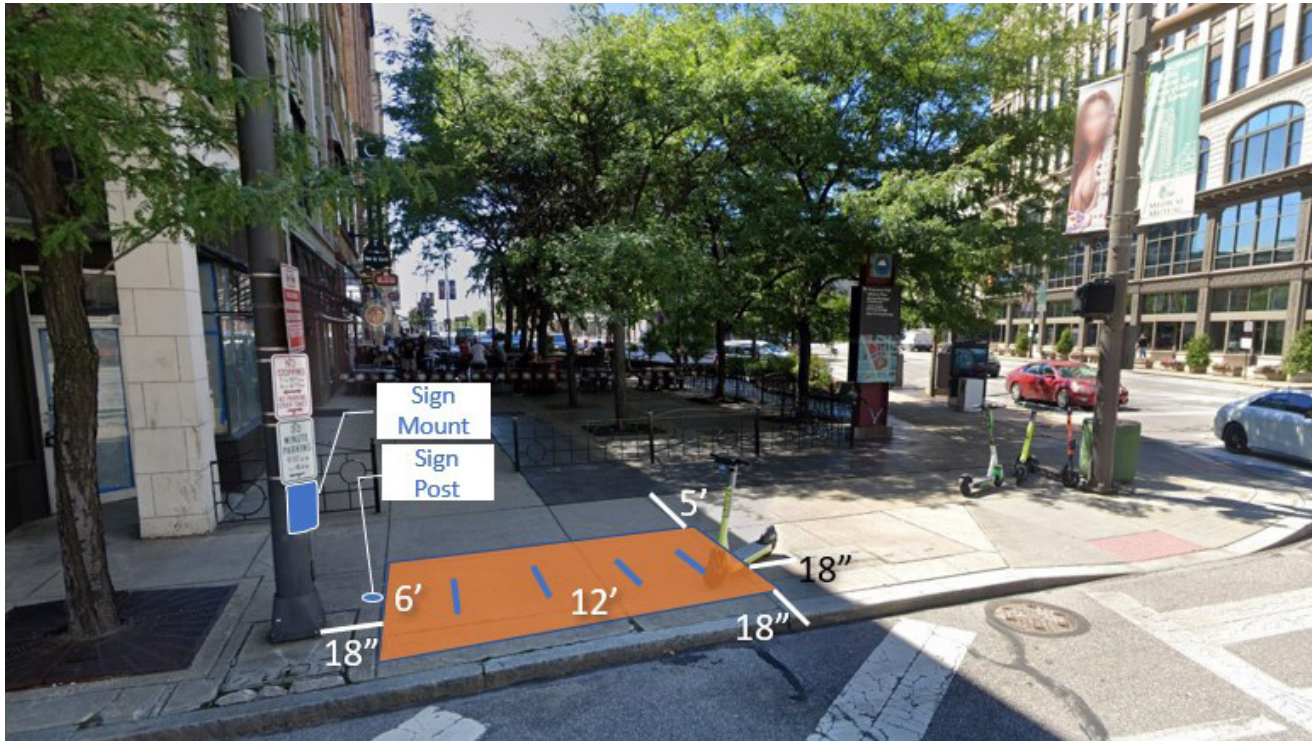
Sign Type: CLE

Sign Post: Existing Pole (if permitted)

Post Height (if needed): 12'

Station CLE256

Cleveland, OH | E. 9th & Prospect



- Public ROW Line
- Parcel Line
- This Station
- Other Stations
- ★/★ NR/Local Historic Site
- ▨ NR Historic District

STATION DETAILS:

Address: E. 9th & Prospect

Municipality: Cleveland

Location Details: SW Corner

Public ROW: Y

Bus Stop: N

On-Street Parking: N

Adjacent Historic Site: Y (Lower Prospect--Huron Historic District)

Placement Notes: 18" from curb, utility pole and utility cover to box

STATION TYPOLOGY:

Typology: 2B

Vehicle Capacity: 8

Number of Racks: 4

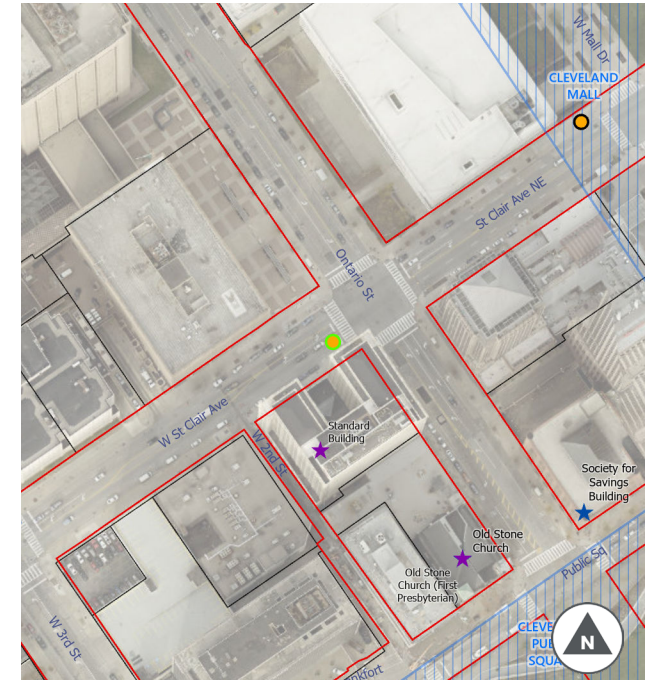
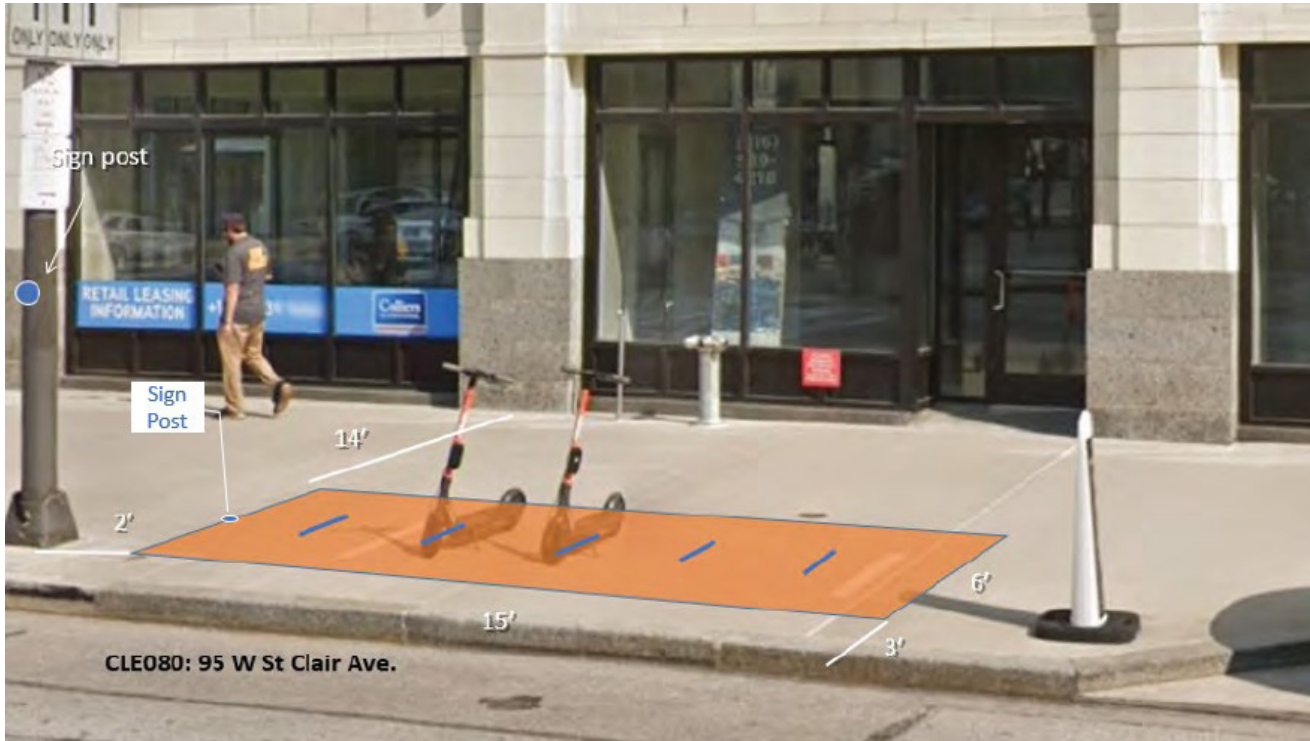
Sign Type: CLE

Sign Post: Existing Pole (if permitted)

Post Height (if needed): 12'

Station CLE080

Cleveland, OH | 95 W. St Clair



- Public ROW Line
- Parcel Line
- This Station
- Other Stations
- NR/Local Historic Site
- NR Historic District

STATION DETAILS:

Address: 95 W. St Clair

Municipality: Cleveland

Location Details: SW Corner

Public ROW: Y

Bus Stop: N

On-Street Parking: N

Adjacent Historic Site: N

Placement Notes: 3' from curb to box, 2' from lightpost to box

STATION TYPOLOGY:

Typology: 2A

Vehicle Capacity: 10

Number of Racks: 5

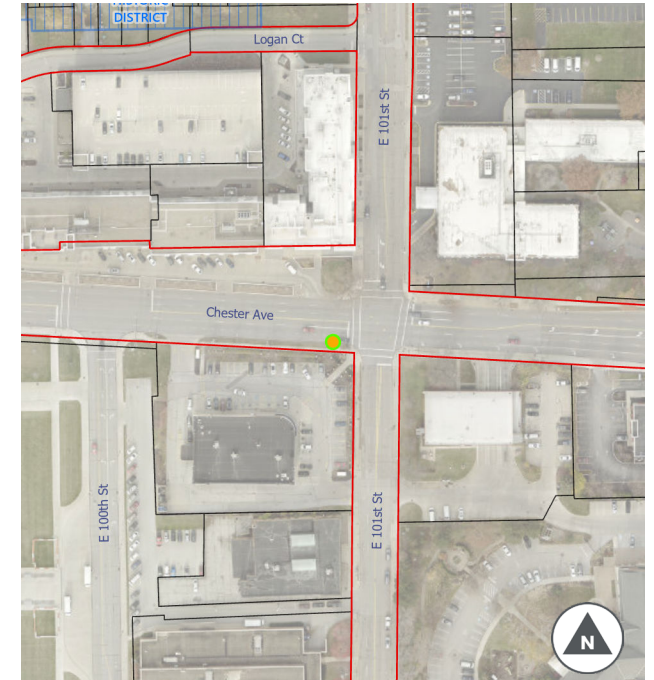
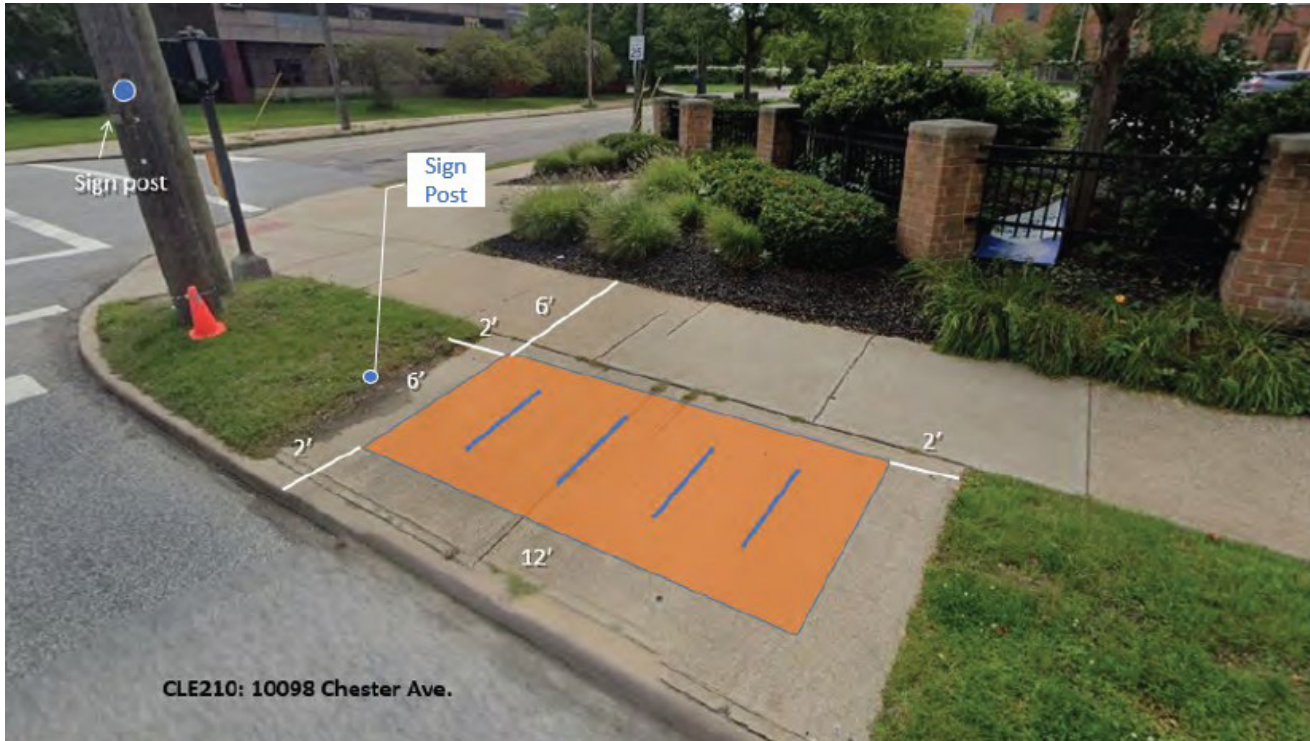
Sign Type: CLE

Sign Post: Existing Pole (if permitted)

Post Height (if needed): 12'

Station CLE210

Cleveland, OH | 10098 Chester Ave.



- Public ROW Line
- Parcel Line
- This Station
- Other Stations
- NR/Local Historic Site
- NR Historic District

STATION DETAILS:

Address: 10098 Chester Ave.

Municipality: Cleveland

Location Details: SW corner

Public ROW: Y

Bus Stop: N

On-Street Parking: N

Adjacent Historic Site: N

Placement Notes: 2' from curb to box, centered between tree lawns

STATION TYPOLOGY:

Typology: 2B

Vehicle Capacity: 8

Number of Racks: 4

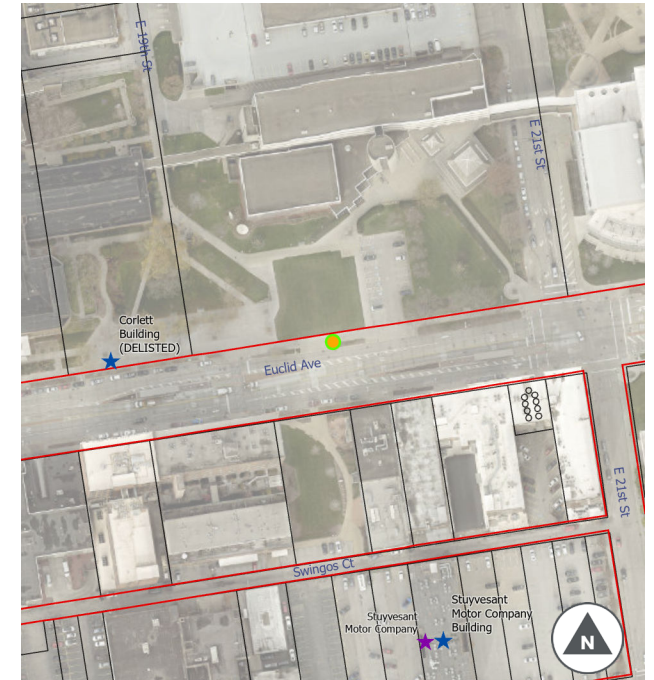
Sign Type: CLE

Sign Post: Existing Pole (if permitted)

Post Height (if needed): 9'

Station CLE244

Cleveland, OH | 1935 Euclid Ave



- Public ROW Line
- Parcel Line
- This Station
- Other Stations
- NR/Local Historic Site
- NR Historic District

STATION DETAILS:

Address: 1935 Euclid Ave

Municipality: Cleveland

Location Details: North side

Public ROW: Y

Bus Stop: N

On-Street Parking: N

Adjacent Historic Site: N

Placement Notes: 3' from curb to box, flush with grass

STATION TYPOLOGY:

Typology: 2A

Vehicle Capacity: 10

Number of Racks: 5

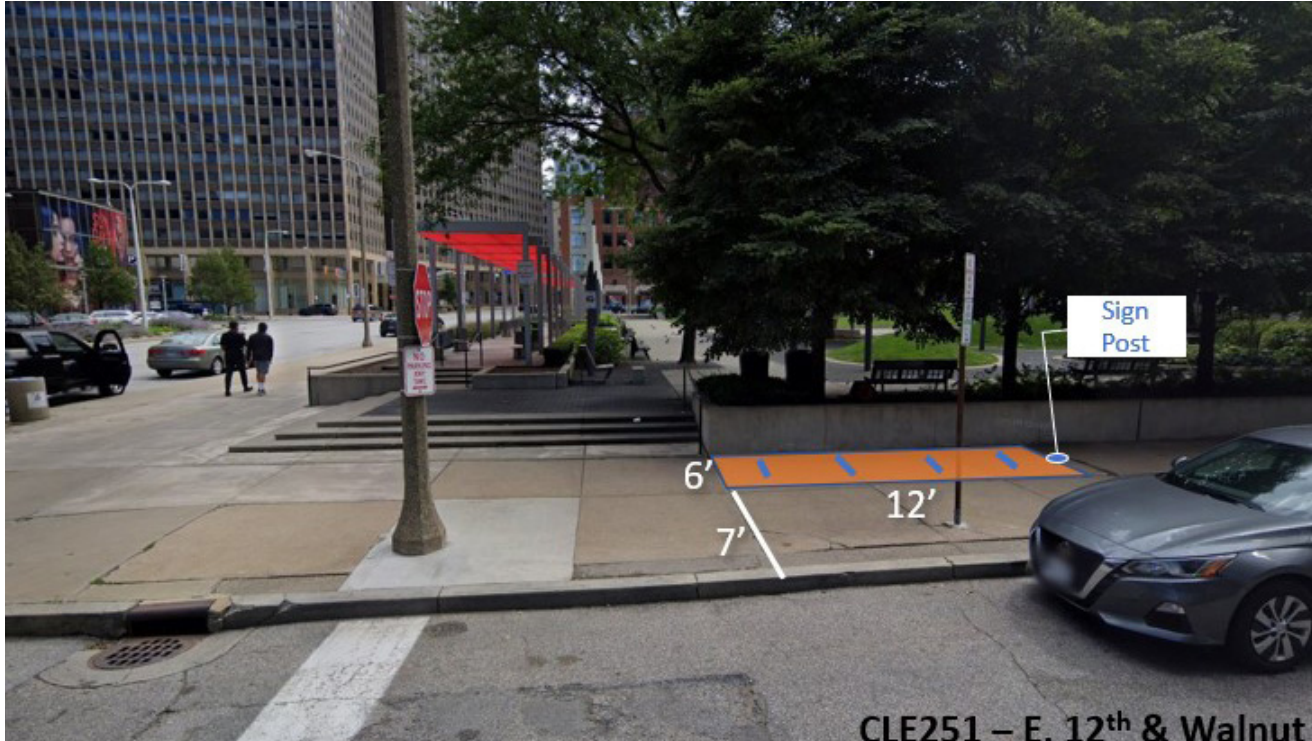
Sign Type: CLE

Sign Post: New 9' post in tree lawn

Post Height (if needed): 9'

Station CLE251

Cleveland, OH | 1265 Walnut Avenue



- Public ROW Line
- Parcel Line
- This Station
- Other Stations
- NR/Local Historic Site
- NR Historic District

STATION DETAILS:

Address: 1265 Walnut Avenue

Municipality: Cleveland

Location Details: SW Corner, fronting Walnut

Public ROW: Y

Bus Stop: N

On-Street Parking: N

Adjacent Historic Site: Y (Erieview Historic District)

Placement Notes: Box flush with retaining wall

STATION TYPOLOGY:

Typology: 2B

Vehicle Capacity: 8

Number of Racks: 4

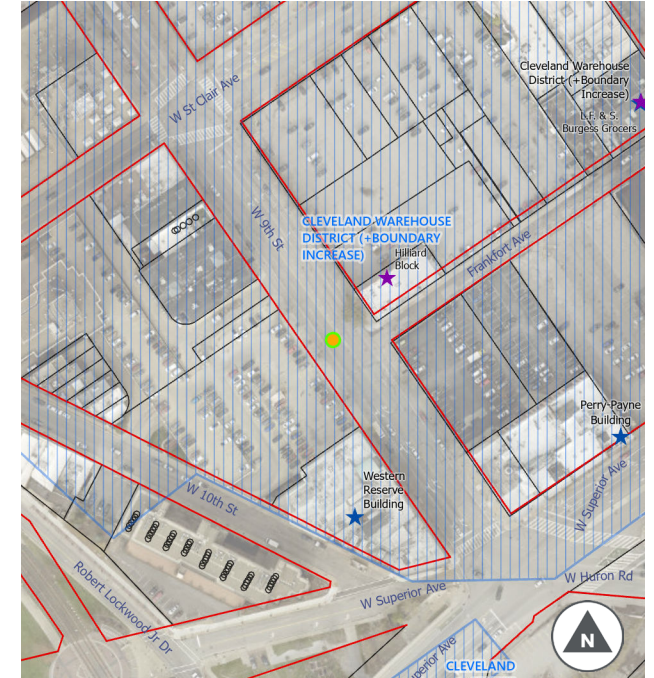
Sign Type: CLE

Sign Post: New 12' Post

Post Height (if needed): 12'

Station CLE257

Cleveland, OH | 1415 W. 9th Street



STATION DETAILS:

Address: 1415 W. 9th Street

Municipality: Cleveland

Location Details: West side of street

Public ROW: Y

Bus Stop: N

On-Street Parking: Y

Adjacent Historic Site: Y (Cleveland Warehouse District)

Placement Notes: 3' from curb to box, 18" from tree pit to box

STATION TYPOLOGY:

Typology: 3A

Vehicle Capacity: 6

Number of Racks: 3

Sign Type: CLE

Sign Post: New 9' post in tree pit

Post Height (if needed): 9'

Station CLE247

Cleveland, OH | 401 Huron Road E.



CLE247: 401 Huron Road E.



— Public ROW Line ● This Station ★/★ NR/Local Historic Site
— Parcel Line ● Other Stations ▨ NR Historic District

STATION DETAILS:

Address: 401 Huron Road E.

Municipality: Cleveland

Location Details: NE corner

Public ROW: Y

Bus Stop: N

On-Street Parking: N

Adjacent Historic Site: N

Placement Notes: 2' from curb to box; centered between tree pits

STATION TYPOLOGY:

Typology: 2A

Vehicle Capacity: 10

Number of Racks: 5

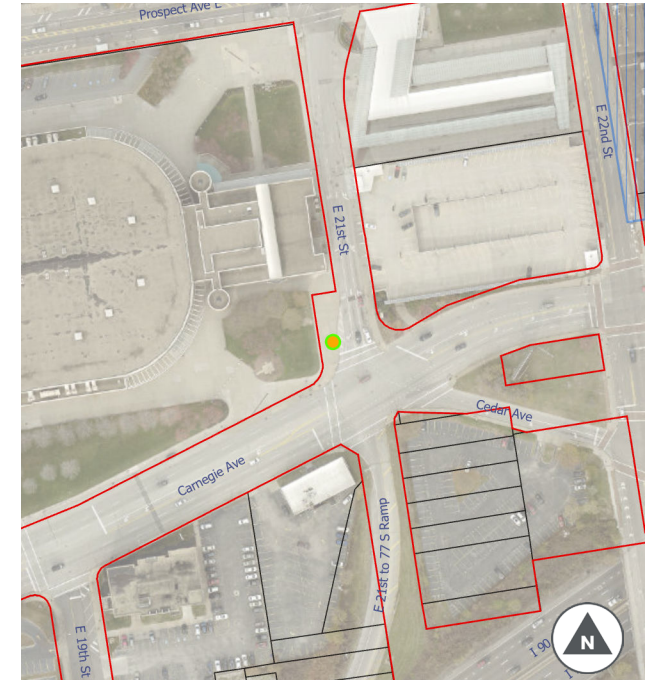
Sign Type: CLE

Sign Post: New 12' Post

Post Height (if needed): 12'

Station CLE252

Cleveland, OH | 2300 E 21st St



STATION DETAILS:

Address: 2300 E 21st St

Municipality: Cleveland

Location Details: NW corner

Public ROW: Y

Bus Stop: N

On-Street Parking: N

Adjacent Historic Site: N

Placement Notes: 2' from curb to box; 3' from lightpost to box

STATION TYPOLOGY:

Typology: 1

Vehicle Capacity: 12

Number of Racks: 6

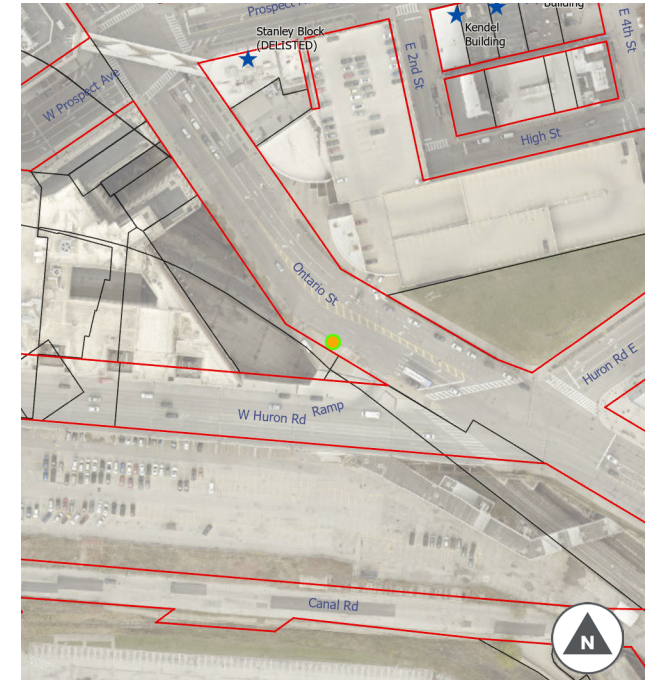
Sign Type: CLE

Sign Post: Existing Pole (if permitted)

Post Height (if needed): 12'

Station CLE255

Cleveland, OH | 2145 Ontario St



STATION DETAILS:

Address: 2145 Ontario St

Municipality: Cleveland

Location Details: NW corner

Public ROW: Y

Bus Stop: Y

On-Street Parking: N

Adjacent Historic Site: N

Placement Notes: 3' from curb to box; 10' from fire hydrant to box

STATION TYPOLOGY:

Typology: 1

Vehicle Capacity: 12

Number of Racks: 6

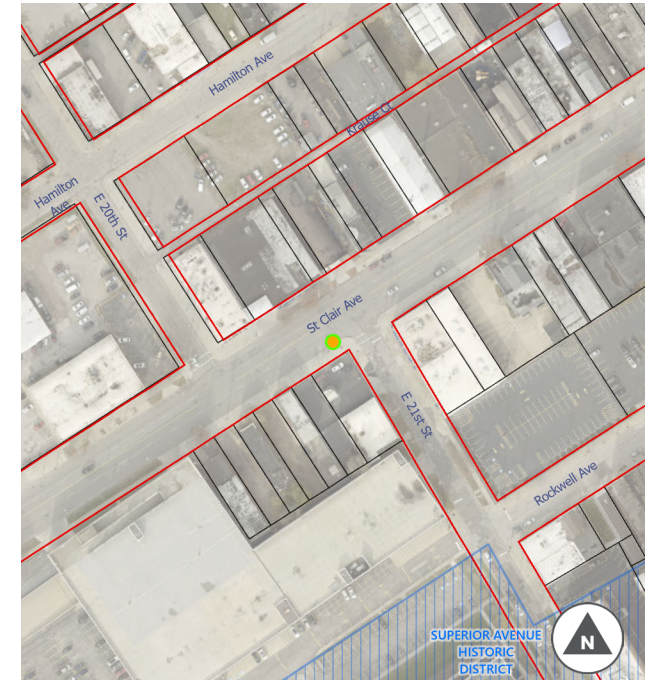
Sign Type: CLE

Sign Post: New 12' Post

Post Height (if needed): 12'

Station CLE261

Cleveland, OH | 2099 St Clair Ave NE



- Public ROW Line
- Parcel Line
- This Station
- Other Stations
- NR/Local Historic Site
- NR Historic District

STATION DETAILS:

Address: 2099 St Clair Ave NE

Municipality: Cleveland

Location Details: SW Corner

Public ROW: Y

Bus Stop: Y

On-Street Parking: N

Adjacent Historic Site: N

Placement Notes: 2' from curb to box, 3' from pole to box

STATION TYPOLOGY:

Typology: 2A

Vehicle Capacity: 10

Number of Racks: 5

Sign Type: CLE

Sign Post: Existing Pole

Post Height (if needed): 12'