



## **CITY OF CLEVELAND**

Mayor Justin M. Bibb

### **MAYOR'S OFFICE OF SUSTAINABILITY**

75 Erieview Plaza, 1<sup>st</sup> Floor, Suite 115  
Cleveland, Ohio 44114  
Phone: (216) 664-2455  
Email: [Sustainability@clevelandohio.gov](mailto:Sustainability@clevelandohio.gov)

## **Public Notice and Opportunity to Comment on the Effects of Installation Electric Vehicle (EV) Chargers within Sterling Recreation Center NOACA EV Charging Stations – Phase 2 Program**

**Please provide comments by Friday February 6, 2026**

The Northeast Ohio Areawide Coordinating Agency (NOACA), in cooperation with the Federal Highway Administration (FHWA) and the City of Cleveland, proposes installing electric vehicle (EV) charging stations at the Sterling Recreation Center, located off E. 32<sup>nd</sup> Street and Buck Court, in Cuyahoga County. The installation will include four Level 2 (L2) Chargers.

While the final location has not yet been determined, one potential parking lot is under consideration. It will use approximately 0.02-0.04 acres (4 parking spaces) of the pre-existing parking lot (0.20 acres) from the Sterling Recreation Center (Figure 1). Detours will not be necessary for the installation of the chargers. Though part of the surface lot will be blocked, access to the Sterling Recreation Center and sufficient parking spaces will be available during installation. Installation is expected to take approximately 1-2 days.

Sterling Recreation Center is a recreational facility located at 1380 E 32<sup>nd</sup> Street. As a public recreational facility, the Sterling Recreation Center was determined as a recreational resource under Section 4(f) of the U.S. Department of Transportation Act of 1966 (Pub. L. 89-670, 80 Stat. 931; codified at 23 U.S.C. 138; implemented by 23 CFR Part 774). This provides protection from adverse impacts from federal-aid transportation projects. A de minimis impact determination is proposed to fulfill those requirements.

NOACA has coordinated with the City of Cleveland's Manager of Built Environment, and the City of Cleveland is the owner and operator of the Sterling Recreation Center, regarding project impacts to ensure the project will not adversely affect the recreational activities, features, or attributes that qualify the park for protection. The Manager of Built Environment has concurred that the project will not adversely affect the protected recreational activities, features, or attributes associated with Sterling Recreation Center.

NOACA will implement the following measures to minimize harm to the Sterling Recreation Center:

- Access to the Sterling Recreation Center will be maintained during installation.
- All staging equipment will be limited to the pre-existing lot; installation shall not take place outside of the proposed construction area.
- Installation activities will be scheduled during off-peak park hours to reduce disruption to visitors.
- Temporary measures such as warning cones or signage will be installed to direct pedestrians safely around the work area.
- Any disturbed pavement or landscaping will be restored to preconstruction condition; minor vegetation where removal is necessary will be replaced.

Based on the assessment of use, FHWA anticipates making a determination of *de minimis* impacts on the proposed temporary use of the Sterling Recreation Center. *De minimis* impacts are minor in nature and, after considering avoidance, minimization, and mitigation measures, will not result in an adverse effect on the park. FHWA will make the final *de minimis* impact determination based on the outcome of the public comment process and the City of Cleveland's written concurrence.

Comments regarding the impacts on the park and the proposed *de minimis* impact finding must be submitted to NOACA by Friday, February 6, 2026.

**Comments may be submitted to:**  
Allison Bunce, Transportation Planner  
Northeast Ohio Areawide Coordinator Agency  
Email: [abunce@mpo.noaca.org](mailto:abunce@mpo.noaca.org)

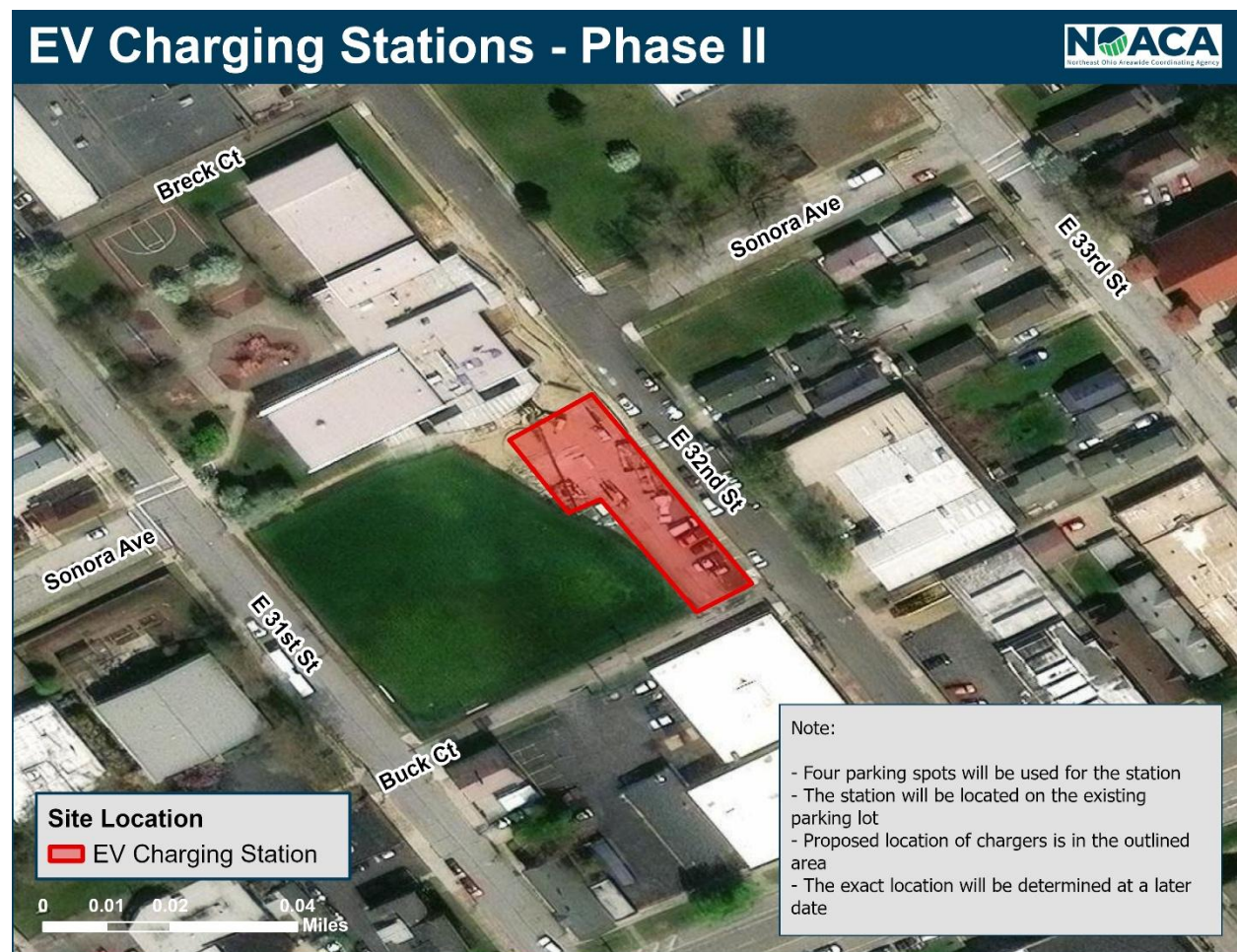


Figure 1. Proposed Location for the EV Charging Stations